

Compact and totally enclosed digital pressurisation units with electronic pressure transducer and user-friendly microprocessor for use on sealed system in order to provide a minimum system pressure requirement.

The Flexfiller is a floor standing, flow rate (up to 18 l/min) top-up pressurisation unit with 18 litre internal break tank. Ideal for Industrial, commercial or large domestic applications. Available in single or twin pump configuration.

Application:

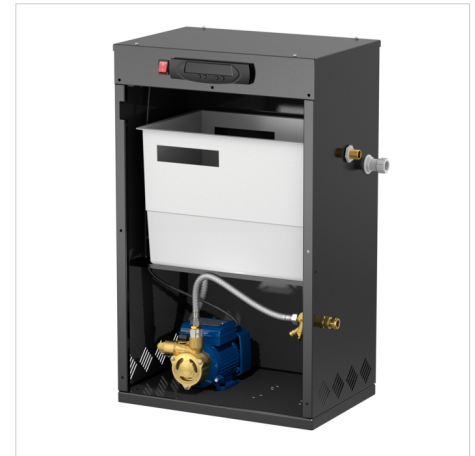
- Commercial, Industrial and Residential.

System Volume (Guide): < 300,000 litres.

Advantages

Product Features:

- For system volumes up to 300,000 litres.
- Fluid Protection Category 5 (AB Weir Overflow).
- System fill mode.
- Onscreen Service Reminder - 12 Months.
- Electric pump, 230V 50Hz 1ph (2160D: 415V 50Hz 3ph).
- Colour: Black (RAL 9005).
- MODBUS RTU Communication Protocol.
- Password protected.
- Sequential programming menu.
- Pressure setting in 0.1 bar increments.
- Pump pulse option.
- Flood Protection (Pump Runtime Limiter, Excessive Start Alarm).
- Event logging: Alarm activations, Pump Run counter (activations per pump), Cumulative run timer (hours per pump), Electrical interruption.
- Volt free contacts: Common Alarm (N/C), High Pressure Alarm (N/O), Low Pressure Alarm (N/O), Sensor Health (N/O), Pump 1 Health (N/O), Pump 2 Health (N/O).



Technical Specifications

Operating Conditions:

- System temperature range at point of connection: 5 °C / 85 °C.
- Ambient temperature range: 5 °C / 40 °C.
- Pressure rating: PN 10.
- Relative humidity 95% non-condensing.
- Noise Rating Data: < 75 dBA.

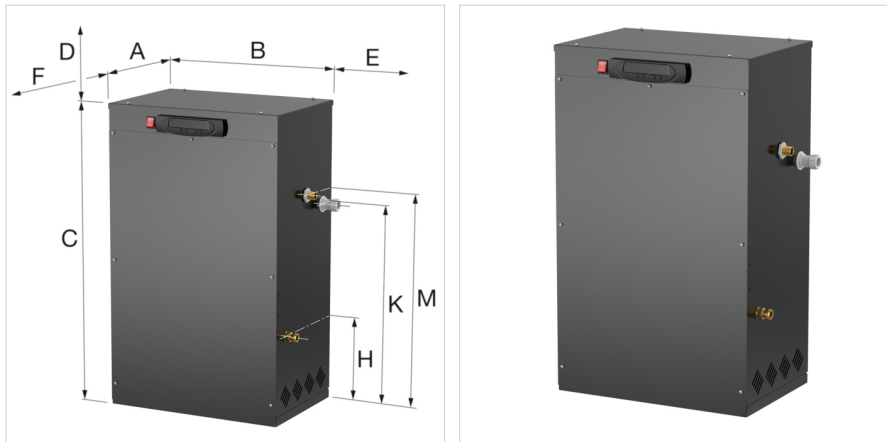
Certifications and Standards Applied:

- PED 2014/68/EU Sound Engineering Practice.
- IEE - Electrical Safety Guidance.
- EMC 2004/108/EC.
- BS 7074 Parts 1 to 3.
- Machinery Directive 2006/42/EC.
- Electronic Components have been tested and comply with the EMC Directives.
- EN 61000-6-1: Generic Standards – Immunity standard for industrial environments.
- EN 61000-6-2: Generic Standards – Immunity standard for industrial environments.
- EN 61000-6-3: Generic Standards – Emission standard for residential, commercial and light industrial environment.
- CE marked components, where applicable.
- WRAS approved float valve to BS1212.
- IP54 (BS EN60529) rated controller.

Material of Construction:

- Cabinet: Mild steel CR4 Powder Coated.
- Float: WRAS approved.
- Break Tank: Polypropylene.
- Connection: Brass / Polypropylene.
- Pipework: Braided Flexhose / EPDM / Copper.
- Finish: Powder coated.
- Valves: Brass / PTFE.

Description	Flexfiller 125D	
Order Code	17395	
Model	<u>Flexfiller</u>	
Pump quantity	1	
Connections	System [mm]	15 ($\frac{1}{2}$ " M)
	Mains Supply [mm]	15 ($\frac{1}{2}$ " M)
	Overflow [mm]	22
Max. Delivery Pressure [bar]	3.0	
Power Consumption [kW]	0.37	
Full Load Current [A]	2.6	
Weight [kg]	29	



Dimensions Flexfiller

Type	Dimensions								
	A [mm]	B [mm]	C [mm]	D [mm]	E [mm]	F [mm]	H [mm]	K [mm]	M [mm]
Flexfiller 125D - 280D	330	480	760	500	150	800	220	520	580
Flexfiller 2160D	660	470	1090	500	150	800	370	690	740

Find more information online:

[Installation and operating instructions](#)
[Kiwa certificate K13471/08](#)
[Flexfiller DXF](#)
[Flexfiller RFA](#)
[Flexfiller STEP](#)
[Flexfiller IGES](#)
[Collection Pressurisation Units REVIT](#)
[Collection Pressurisation Units DXF](#)
[Collection Pressurisation Units STEP](#)
[Collection Pressurisation Units IGES](#)
[Export catalogue](#)
[Overview of spares kits](#)
[Spare parts list](#)
[Product Datasheet Flexfiller](#)
[Product Datasheet Flexfiller 2160D](#)
[Packaging data](#)

Flamco Group
Fort Blauwkapel 1
1358 DB, Almere - nl

T +31 (0)36 52 62 300
 E info@aalberts-hfc.com
 I flamcogroup.com