

EPS insulating mantle with a polypropylene outer shell and lid (white, RAL 9010 / white aluminium, RAL 9006).

**Advantages**

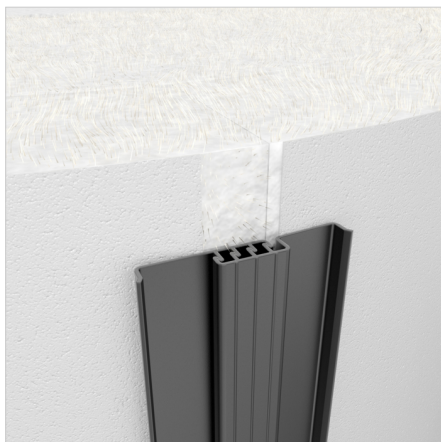
- Approximately 25% reduction of heat loss compared to soft foam insulation.
- Easy to install using a zip.

**Technical Specifications**

- EPS insulating mantle: fire category B1 according to DIN 4102.
- Thermal conductivity = 0.032 W/(m.K) according to DIN EN 12667.



Description	FlexTherm Ins. 1500L Buffer, 10cm White
Order Code	18702
GTIN	08712874187023
Model	<u>EPS insulating mantle</u>
Colour	white
Thickness [mm]	100



**Find more information online:**

[Export catalogue](#)

[Packaging data](#)

[Export catalogue](#)

[Packaging data](#)

Washway Lane

UK-WA10 6PB, St Helens, Merseyside - gb

T +44 17 447 447 44

E [uk.info@aalberts-hfc.com](mailto:uk.info@aalberts-hfc.com)

I [flamcogroup.com/uk-en](http://flamcogroup.com/uk-en)