

## Data sheet: TOP-Z 25/10 (1~230 V, PN 10, RG)

### Hydraulic data

Max. volume flow $Q$	9.5
Delivery head for $Q_{min}$ $H_{Qmin}$	9.3

### Motor data

Mains connection	1-230 V, 50 Hz
Emitted interference	EN 61000-6-3
Interference resistance	EN 61000-6-2
Power consumption $P_{1 min}$	150 W
Power consumption $P_{1 max}$	335 W
Rated power $P_2$	180 W
Rated current $I_N$	1.62 A
Protection class motor	IPX4D
Motor protection	Optional SK 602N/622N tripping unit
Insulation class	H
Max. speed $n_{max}$	2800 rpm
Threaded cable connection	2 x PG13.5

### Materials

Shaft	1.4122, X39CrMo17-1
Pump housing	1.4031, X39Cr13
Impeller	PPE-GF30
Bearing	Carbon, synthetic resin impregnated

### Product data

Maximum operating pressure $PN$	10 bar
Max. fluid temperature $T$	110 °C
Min. fluid temperature $T$	-20 °C
Max. ambient temperature $T$	40 °C
Max. permitted total hardness in domestic hot water circulation systems	3.57 mmol/l (20 °dH) (3.21 mmol/l (18 °dH) for 20/4 + 25/6)

### Installation dimensions

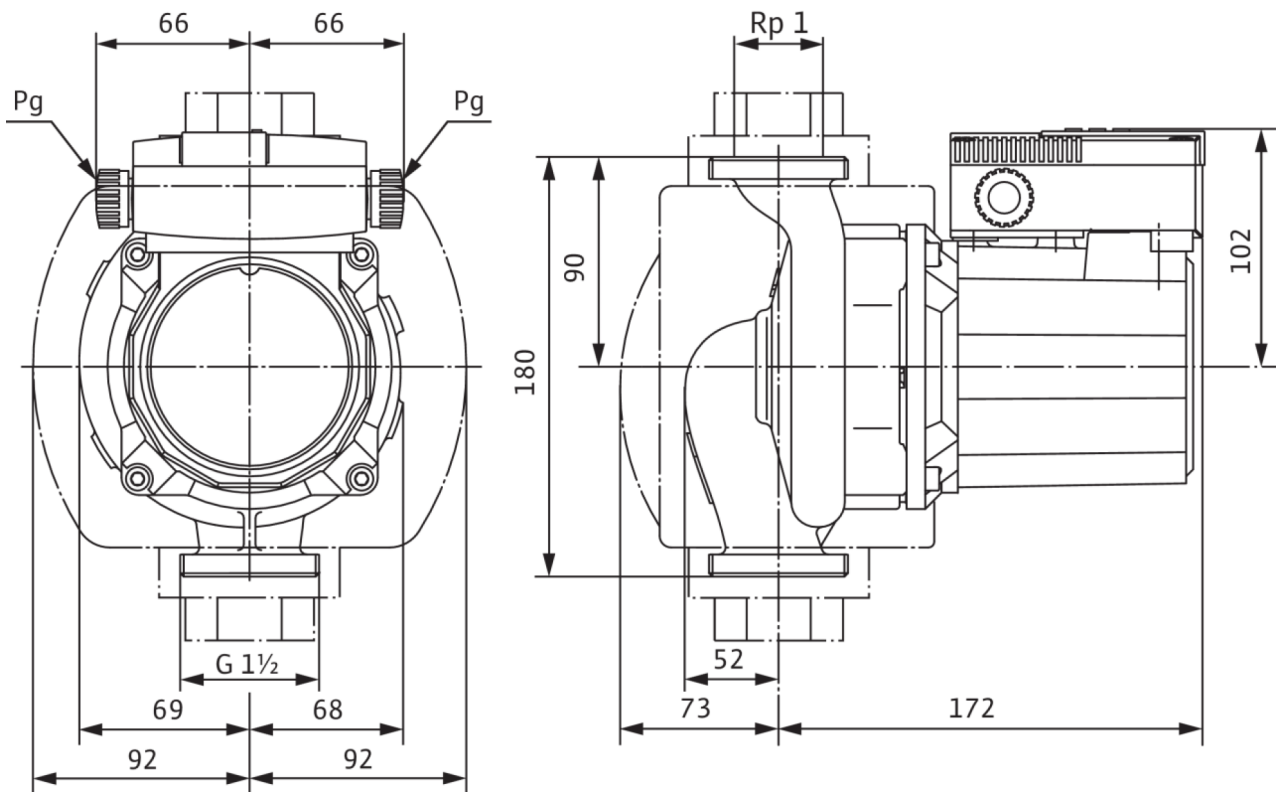
Pipe connection on the suction side	G 1½
Pipe connection on the pressure side	G 1½
Port-to-port length $l_0$	180 mm

### Information for order placements

Brand	Wilo
Product description	TOP-Z 25/10 (1~230 V, PN 10, RG)
Article number	2061964
Net weight, approx. $m$	7 kg

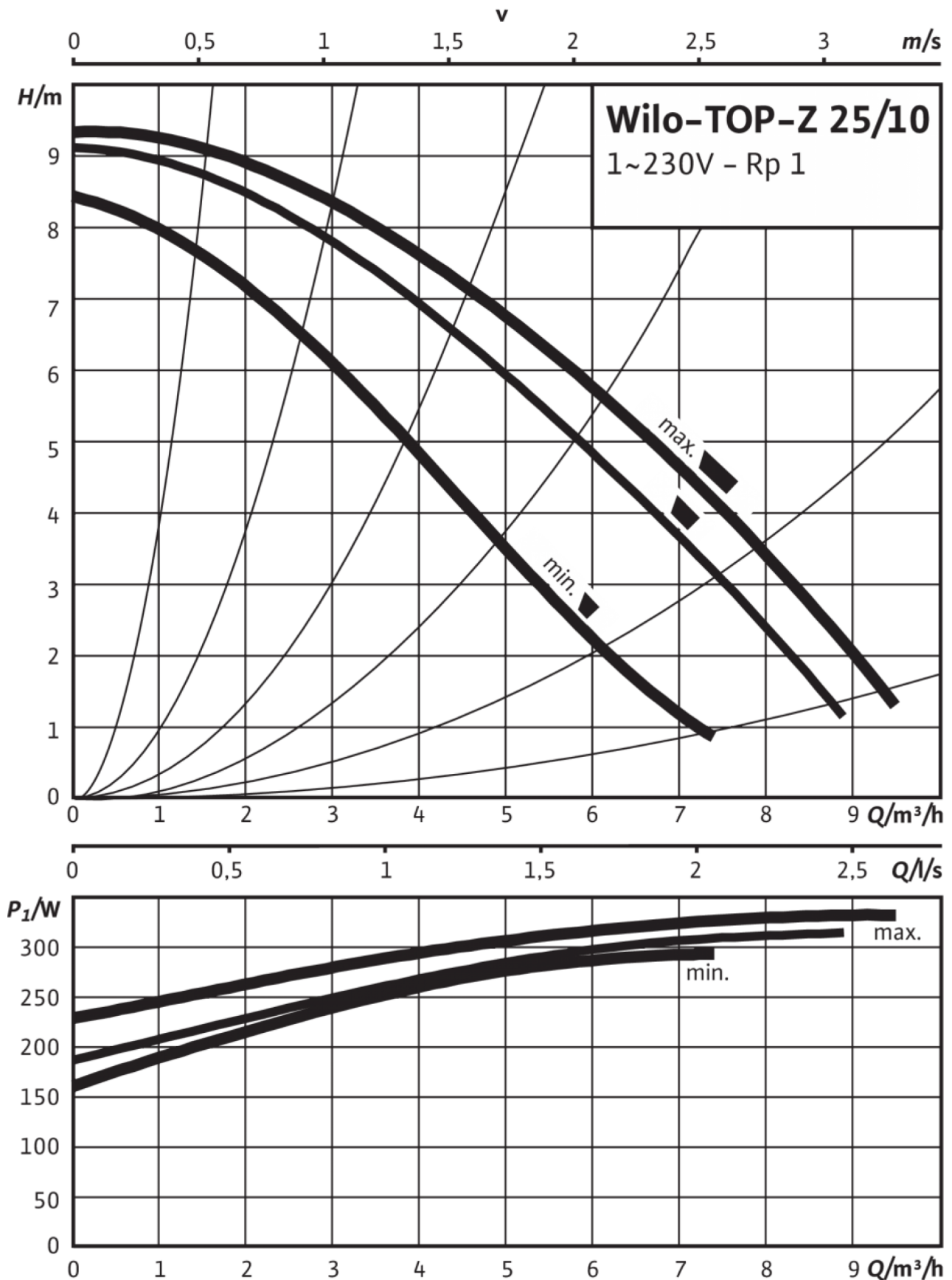
Dimensions and dimensions drawings: TOP-Z 25/10 (1~230 V, PN 10, RG)

TOP-S



### Pump curves: TOP-Z 25/10 (1~230 V, PN 10, RG)

TOP-Z 25/10, 1~



## Tender text: TOP-Z 25/10 (1~230 V, PN 10, RG)

This circulator is suitable only for drinking water.

Can be used for domestic hot water circulation systems in the industry and building services.

Maintenance-free glandless circulator with threaded or flange connection, pre-selectable speed stages for power adjustment.

### Equipment and function

- Manual power adjustment with 3 speed stages
- Pumps with 1- motor:
  - P2 up to 90 W: internal protection against unacceptably high winding temperatures
  - P2 = 180 W: Full motor protection with thermal winding contacts in conjunction with tripping unit
- Pumps with 3- motor:
  - P2 up to 90 W: internal protection against unacceptably high winding temperatures
  - P2 ≥ 180 W: Full motor protection with integrated trip electronics
- Fault signal light
- Contact for collective fault signal
- Direction of rotation signal lamp
- Mains connection 3~, 230 V with optional switching plug
- Pump housing in red brass or grey cast iron (stainless steel depending on type)
- PN 6/PN 10 combination flange (for DN 40 to DN 65)
- Thermal insulation shells
- Additional functions by retrofittable Protect Module C:
  - SSM fault signal as potential-free NC contact
  - SBM run signal as potential-free NO contact
  - "Overriding Off" control input via external potential-free contact (NC contact)
  - Blocking detection
  - Full motor protection with tripping unit
  - Fault acknowledgement
- Dual pump management (two single pumps installed in parallel) Main/standby operation (automatic fault-actuated switchover/time-sensitive pump alteration)

### Materials

Shaft	1.4122, X39CrMo17-1
Pump housing	1.4031, X39Cr13
Impeller	PPE-GF30
Bearing	Carbon, synthetic resin impregnated

### Operating data

Fluid media	Water
Min. fluid temperature $T$	-20 °C
Max. fluid temperature $T$	110 °C
Maximum operating pressure $p$	10 bar
Max. permitted total hardness in domestic hot water circulation systems	3.57 mmol/l (20° dH) (3.21 mmol/l (18° dH) for 20/4 + 25/6)

### Motor data

Emitted interference	EN 61000-6-3
Interference resistance	EN 61000-6-2
Mains connection	1~230 V, 50 Hz
Power consumption $P_{1\max}$	335 W
Max. speed $n_{\max}$	2800 rpm
Rated current $I_N$	1.62 A
Protection class motor	IPX4D

### Installation dimensions

Pipe connection on the suction side	G 1½
Port-to-port length $l_0$	180 mm

### Information for order placements

Net weight, approx. $m$	7 kg
Brand	Wilo
Product description	TOP-Z 25/10 (1~230 V, PN 10, RG)
Article number	2061964