

Data sheet

Hydraulic data

Maximum operating pressure P_N	10 bar
Head max H_{\max}	13,0 m
Flow max Q_{\max}	12,0 m ³ /h
Minimum suction head at 50 °C m	3 m
Minimum suction head at 95 °C m	10 m
Minimum suction head at 110 °C	16 m
Min. fluid temperature T_{\min}	-10 °C
Max. fluid temperature T_{\max}	110 °C
Min. ambient temperature T_{\min}	-10 °C
Max. ambient temperature T_{\max}	40 °C

Motor data

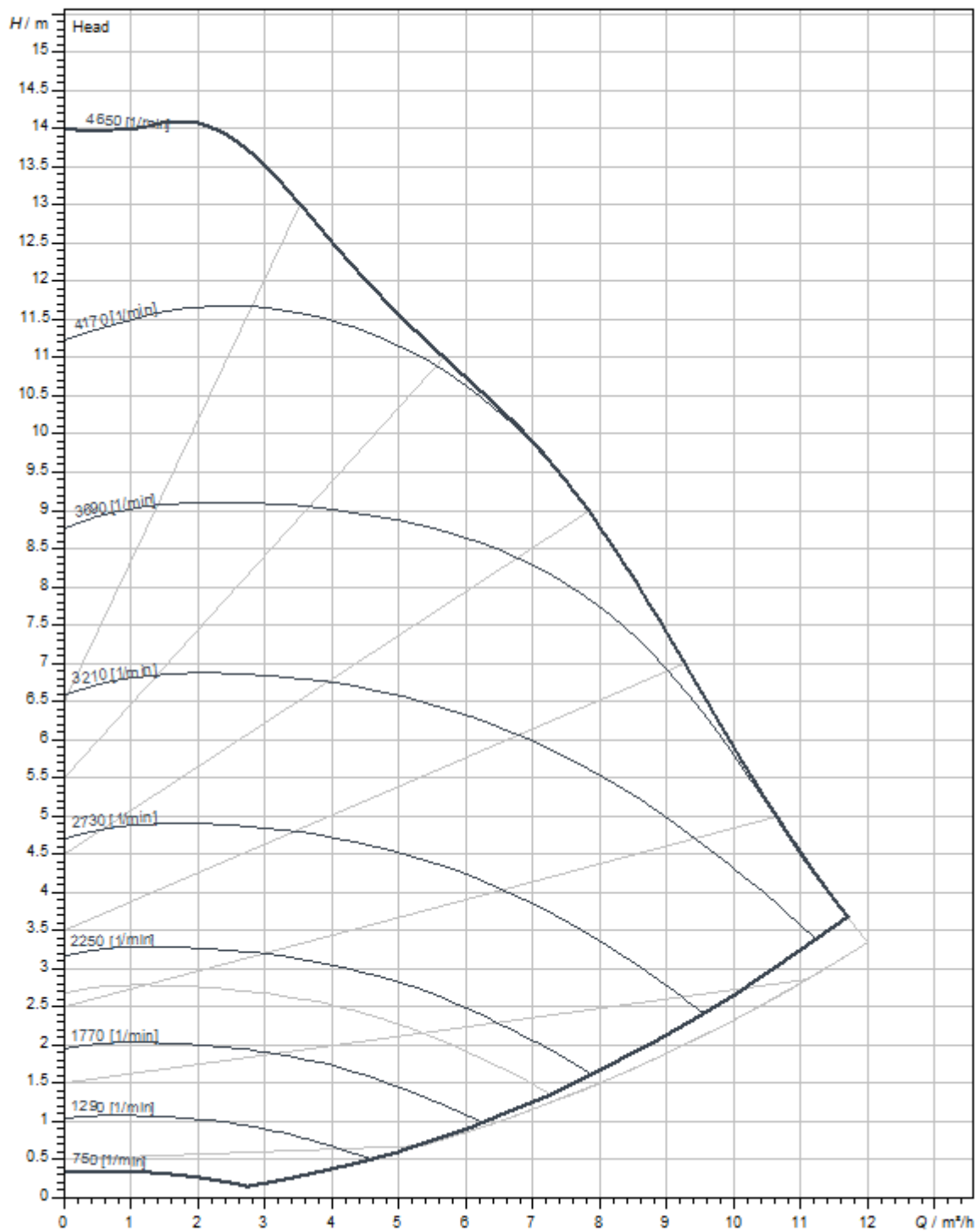
Energy efficiency index (EEI)	0,19
Mains connection	1~230 V \pm 10%, 50/60 Hz
Rated power P_2	304 W
Min. speed n_{\min}	750 1/min
Max. speed n_{\max}	4650 1/min
Power consumption $P_{1\min}$	7 W
Power consumption $P_{1\max}$	340 W
Interference emission	EN 61800-3;2004+A1;2012 /residential area (C1)
Interference immunity	EN 61800-3;2004+A1;2012 /industrial environment (C2)
Insulation class	F
Protection class	IPX4D

Installation dimensions

Pipe connection on the suction side DNs	G 2
Pipe connection on the pressure side DNd	G 2
Port-to-port length LO	180 mm

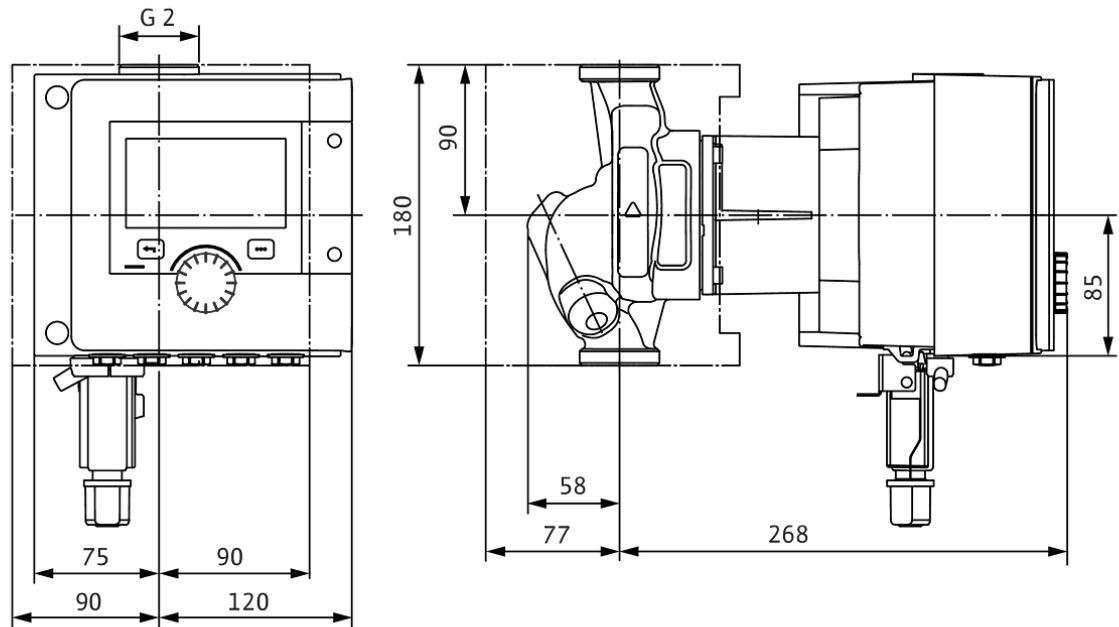
Materials

Pump housing	Cast iron
Impeller	PPS-GF40
Shaft	1.4122, DLC-coated
Bearing	Carbon, antimony-impregnated

Pump curves

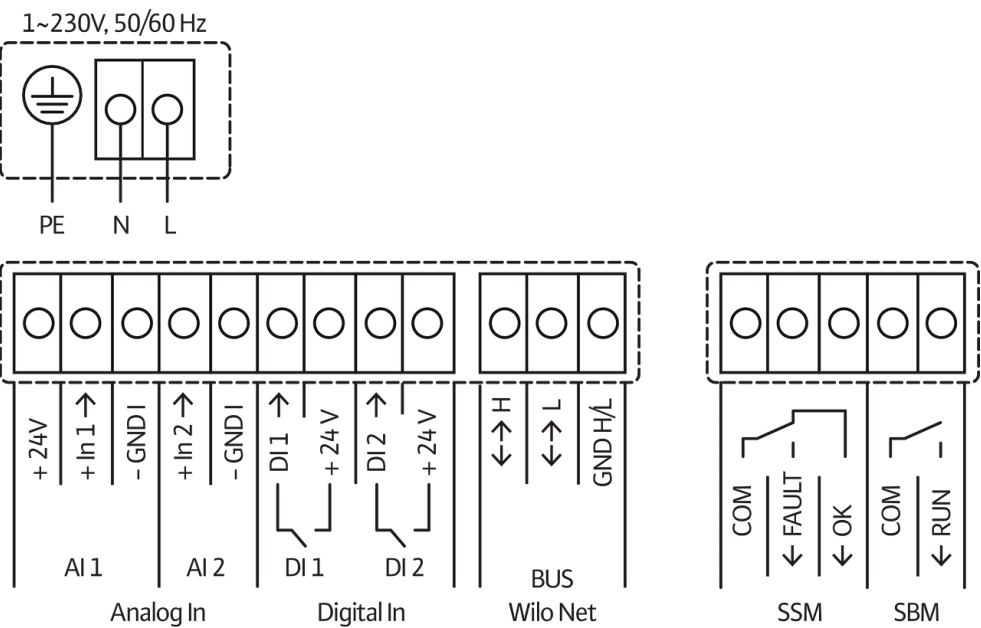
Dimensions and dimensions drawings

Stratos MAXO 30/0,5-14 PN 10



Wiring diagram

Standard: 1~ 230 V, 50/60 Hz, Option: 3~ 230 V, 50/60 Hz



SSM: Collective fault signal (NC contact in accordance with VDI 3814, load capacity 1 A, 250 V ~)