

For use in potable water or fresh water installations.

The Airfix A expansion vessels operate in such a way that the water flows right through and they are continuously flushed with fresh water from the mains. This prevents tepid, stagnant water from collecting in the vessel in which bacterial growth could occur. Therefore, users can be assured of high quality potable water. Applying an Airfix A expansion vessel to a water heater prevents the opening of the safety group or safety valve each time the potable water is heated. As a result, not only the life of the safety group or safety valve is significantly prolonged (damage or calcification of seat is avoided) but also the risk of permanent leakage (with high water loss as a consequence). An Airfix vessel is also a perfect solution in basement applications where the drain is higher than the safety valve.

Airfix A is a flow through vessel, that operates by diverting some of the connection fluid flow into the vessel to prevent stagnation.

- Partial diversion flow through.



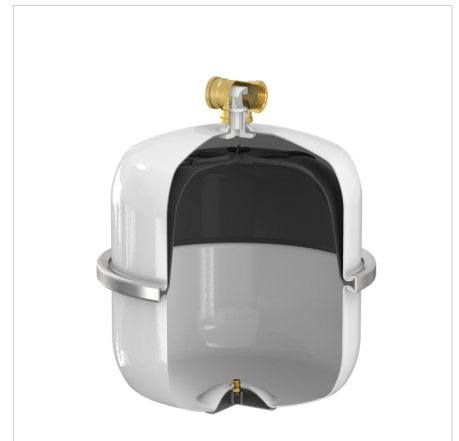
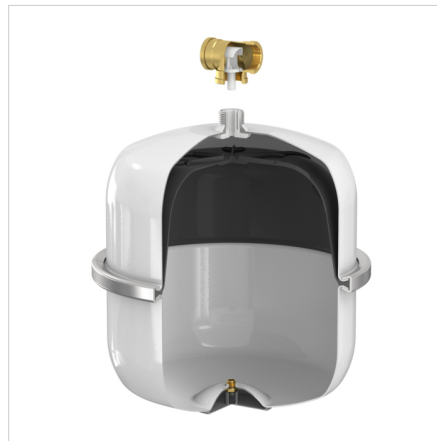
Advantages

- The Airfix A is fitted with a synthetic flow through device in a standard T-piece (not included) which eliminates the formation of unwanted bacteria inside the vessel.
- Including synthetic flow divider.
- No waste of valuable potable water.
- With special flow through construction.
- Continuous flow through prevents bacterial growth.
- Special butyl rubber diaphragm does not add any colour, odour or taste to the water.
- Corrosion-resistant coating inside, not only on the water side but also on the nitrogen side.
- Internationally approved and certified.
- The clench ring construction allows coating before assembly.
- Nitrogen gas filling for longer retention of pre-charge.
- Airfix A can be fitted with an AirfixControl. AirfixControl enables an easy yearly precharge check of the Airfix expansion vessel.

Technical Specifications

- Partial diversion flow through.
- Maximum working pressure: 8/10 bar.
- Suitable for systems with a maximum system temperature of 120 °C.
- Minimum / Min./ max. temperature diaphragm: 1 °C / 70 °C.
- Vessels in accordance with EN13831.
- Approvals: DVGW-W270
ACS
PZH
KIWA approved execution available on request.
Approved for potable water applications according to CE 2002/16/EC.
- In accordance with Pressure Equipment Directive 2014/68/EU.
- Quality Vignette DIN-DVGW: 04-0359-W M 003/04.
- Airfix A 35 - 80: With suspension eye. Connection to the underside of the vessel.
- Colour: White RAL9010.

Description	Airfix A DHW exp.ves. 50/4,0[8bar]	
Order Code	24749	
GTIN	08712874247499	
Model	<u>Airfix A 8 - 80</u>	
Pre- charge [bar]	4	
Max. working pressure [bar]	8	
Dimensions	Ø [mm]	437
	H. [mm]	472
Connection	R $\frac{3}{4}$ "	
Weight [kg]	11.2	



Classification General Data

Etim Group	Pressure increase/decrease
Etim Class	Membrane pressure expansion vessel
Product Name	Airfix A DHW exp.ves. 50/4,0[8bar]
Brand	Flamco
Product Type	50
Artikelnummer	24749
GTIN	08712874247499

Attributes

Suitable for central heating	No
End pressure	8 Bar
Suitable for cooling	No
Suitable for tap water	Yes
Suitable for tap water	Yes
Volume	50 Litre
Pre-pressure	4 Bar
On base, vertical	Yes
On base, horizontal	No
Max. operating pressure	8 Bar
With fixed wall support	No
Vertical positioning	Yes
Max. medium temperature (continuous)	70 Degrees celsius
Horizontal positioning	No
With legs	No
With exchangeable membrane	No
Nominal diameter expansion connection	3/4 inch (20)
Outer pipe diameter, expansion connection	26.5 Millimetre
Connection	External thread conical BSPT-R (ISO 7-1 / EN 10226-1)
Material membrane/bladder	IIR (butyl)
With vessel manifold	No
Colour	White
With drain	No
Diameter	405 Millimetre
Height	472 Millimetre
With pressure gauge	No
With safety valve	No
With mounting material	No

Find more information online:
[Installation and operating instructions](#)
[Declaration of conformity PED 2014/68/EU](#)
[PED Module D](#)
[PED Module D1](#)
[Certificate DIN-DVGW](#)
[Certificate ACS](#)
[Certificate WRAS](#)
[Airfix A - UKCA Declaration of Conformity 25-80L](#)
[Airfix A ADSK](#)
[Airfix A ADSK Revit](#)
[Airfix A DWG](#)
[Airfix A IPT](#)
[Airfix A STEP](#)
[Export catalogue](#)
[White paper Expansion vessels in potable water systems](#)
[Packaging data](#)



Flamco

Flow of Innovation

24749 - Airfix A 50 - 4.0 bar

Product Data Sheet 2022/12/06

Washway Lane

UK-WA10 6PB, St Helens, Merseyside - gb

T +44 17 447 447 44

E uk.info@aalberts-hfc.com

I flamcogroup.com/uk-en