

Flexofit Super absorbs water hammer in order to minimize noise and damage to the system.

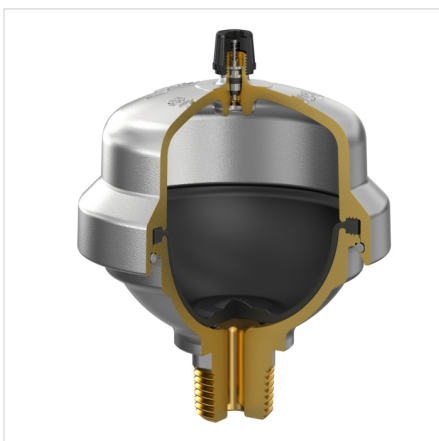
A water hammer arrestor absorbs the wave of pressure before it can develop into water hammer. The Flexofit Super does this by having two areas that are separated by a rubber diaphragm. On one side, there is a gas cushion under pressure, while the other side is in connected to the system. The gas cushion compresses and absorbs the wave of pressure.

Technical Specifications

- Maximum working pressure: 10.0 bar (peak load: 40.0 bar).
- Maximum working temperature: 90 °C.
- Capacity: 160 cm³.
- Solid brass, chromium plated housing.
- Membrane: butyl rubber.



Description	Flexofit Super shock arrester 1/2	
Order Code	24980	
GTIN	08712874249806	
Model	<u>Flexofit Super</u>	
Pre-charge [bar]	2	
Dimensions	Ø [mm]	83
	H. [mm]	102
Connection	R 1/2"	



Classification General Data

Etim Group	Pressure increase/decrease
Etim Class	Water hammer damper
Product Name	Flexofit Super R $\frac{1}{2}$ "M 2.0 bar
Brand	Flamco
Product Type	Flexofit Super 1/2
Artikelnummer	24980

Find more information online:[Installation and operating instruction](#)[Certificate KIWA](#)[Flexofit Super ADSK](#)[Flexofit Super DWG](#)[Flexofit Super STEP](#)[Export catalogue](#)[Packaging data](#)[Flexofit Super](#)[Flexofit Super Romanian](#)**Attributes**

Volume	0.16 Litre
Outer pipe diameter	21.3 Millimetre
KIWA certified	Yes
Max. medium temperature (continuous)	90 Degrees celsius
Max. operating pressure	10 Bar
Height	102 Millimetre

Fort Blauwkapel 1
1358 DB, Almere - nl

T +31 (0)36 52 62 300
E info@aalberts-hfc.com
I flamcogroup.com