

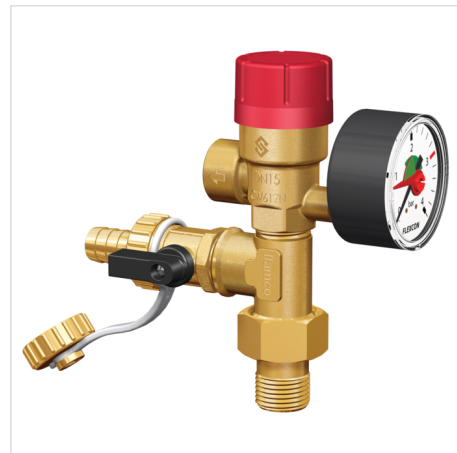
Domestic heating system filling device with safety valve and pressure gauge 0 - 4 bar.

Advantages

- Prescomano and ball valve are supplied separately from the fill and drain tap, so that mounting in all positions is possible.

Technical Specifications

- Minimum/Maximum working temperature: -10 °C / 120 °C.
- Peak load: 140 °C.



Description	Prescofiller fill safetygroup	
Order Code	27685	
GTIN	08712874276857	
Model	<u>Prescofiller</u>	
Set pressure [bar]	3.0	
Connection	Inlet	1/2" M
	Outlet	1/2" F
Heating capacity [kW]	125	



Classification General Data

Etim Group	Measuring and control devices
Etim Class	Safety valve
Product Name	Prescofiller fill safetygroup
Brand	FLAMCO
Product Type	Accessories
Artikelnummer	27685
GTIN	08712874276857

Attributes

Housing material	Brass
Material quality	Dezincification resistant brass (DZR)
Nominal diameter	1/2 inch (15)
Connection 1	Internal thread cylindrical BSPP-G (ISO 228-1)
Nominal diameter connection 1	1/2 inch (15)
Outer pipe diameter connection 1	21.3 Millimetre
Connection 2	Internal thread cylindrical BSPP-G (ISO 228-1)
Nominal diameter connection 2	1/2 inch (15)
Maximum pressure at 20 C	10 Bar
Bellows seal	No
Overflow pressure	3 - 3 bar
Suitable for continuous operation	Yes
Height	100 Millimetre
Angle of the device	90 Degrees
Spindle angle	180 Degrees
Suitable for heating	No
Suitable for cooling	No
Suitable for hot tap water	No

Find more information online:[CE declaration](#)[Declaration of conformity UKCA](#)[Prescofiller DWG](#)[Prescofiller STEP](#)[Export catalogue](#)[Packaging data](#)

Washway Lane
UK-WA10 6PB, St Helens, Merseyside - gb

T +44 17 447 447 44
E uk.info@aalberts-hfc.com
I flamcogroup.com/uk-en