

JE 2-120 G10 MM20

Electric - Qmax 44 m³/h (190 USGPM) - Hmax 20,5 m (67 ft)



Product data

Suction port	threaded - 2" BSP
Delivery port	threaded - 2" BSP
Qmax	44 m ³ /h (190 USGPM)
Hmax	20,5 m (67 ft)
Solids handling	25 mm (1")
Engine power	2,2 kW - 3 HP
Weight	41 kg (90 lb)

Indicative picture of the product

J

Self-priming centrifugal pumps

The J series self-priming centrifugal pumps are for applications where the main feature is the difficulty in priming: even with suction heights of several meters the machine quickly evacuates the air from the suction pipe and starts pumping. Furthermore, compared to other pumps, the semi-open impeller makes the J suitable for pumping liquids with solids in suspension.

Applications

Varisco S.p.A. has a long-standing experience in designing and producing self-priming pumps and now has a wide range of solutions and materials. The J have features that not only meet the needs of the market but make it an extremely versatile product suitable for professionals of Constructions, Industry and Emergency duty.

Drainage of excavations, canals and ponds
Ground water dewatering with wellpoint systems
Sewage by-pass
Naval platforms ballasting
Drainage after flooding or terrential rains

Benefits

Rapid self-priming

without foot valve up to a height of 7.5 m (24.5 ft)

High resistance

to abrasive liquids and turbid sandy waters

Semi-open impeller

solids handling up to 25 mm (1")

Wear plate

Easily replaceable cast iron wear plate, front to the impeller

Easy maintenance

removable front cover for direct access to the impeller and eventual unclogging

JE 2-120 G10 MM20

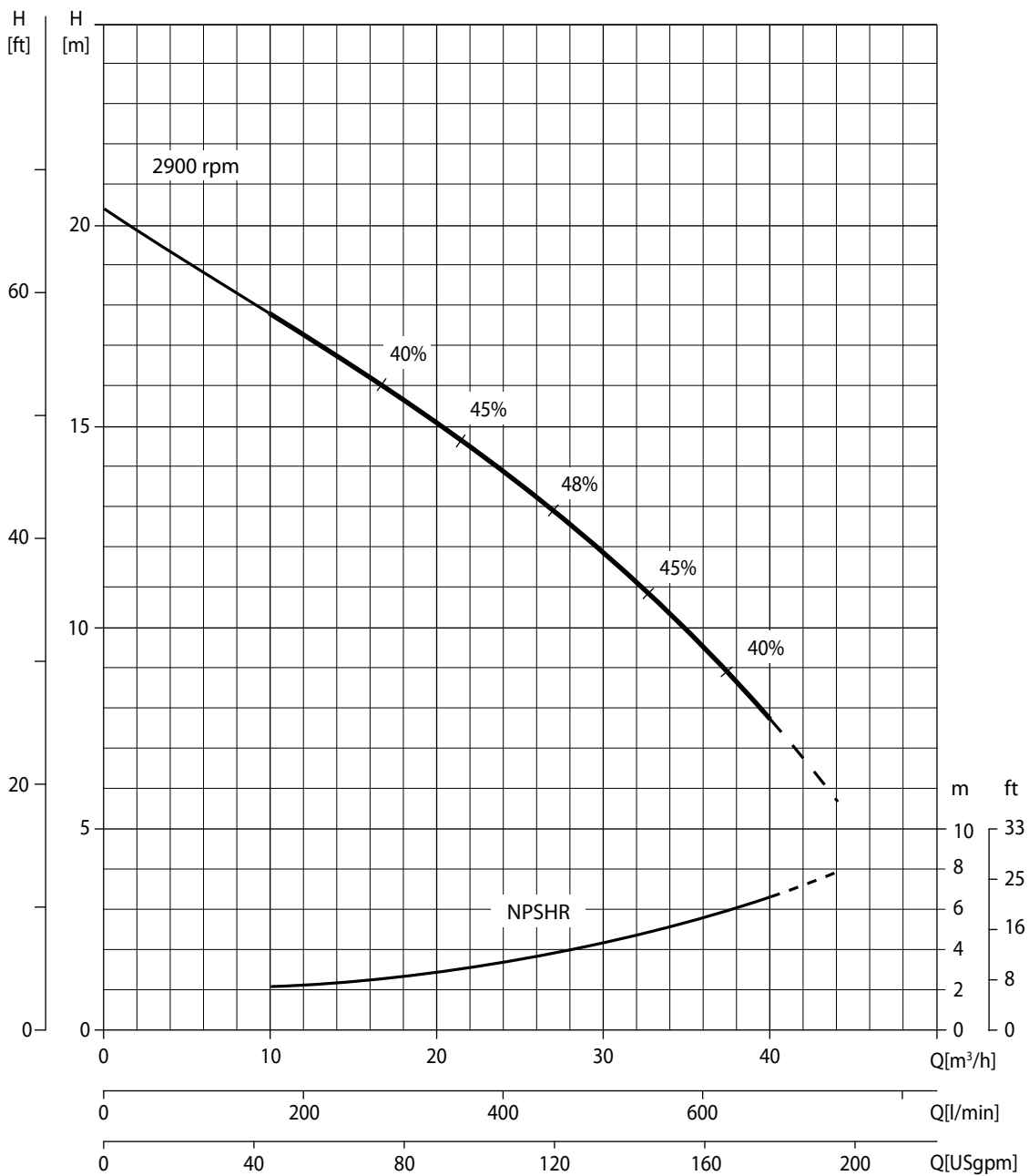


Performance curves

Speed [rpm] 2900					
Q [m³/h]					
	10	20	30	40	44
h suc. [m]	H delivery[m]				
0	17,8	15,0	11,8	7,8	5,7
1.5	16,0	12,0	7,5	-	-
3	14,0	10,5	5,5	-	-
4.5	12,5	8,5	-	-	-
6	11,0	-	-	-	-
7.5	10,0	-	-	-	-

Test according to UNI EN ISO 9906 standard - level 2
 Test liquid: clean water, density 1,000 kg/m³
 Spherical solids handling: D.25 mm (1")
 Priming time: 30 s from 1,5 m (4.9 ft)
 Max absorbed power: 2,4 kW - 3.2 HP (2.900 rpm)

Recommended operating range



JE 2-120 G10 MM20



Technical data

Pump

Pump model	J 2-120 G10
Qmax	44 m ³ /h - 730 l/min (200 USGPM)
Hmax	20,5 m (67 ft)
Suction port	threaded - 2" BSP
Delivery port	threaded - 2" BSP
Impeller type	semi-open, 3 vane
Solids handling	25 mm (1.0 ")
Casing	EN-GJL-200 cast iron
Impeller	EN-GJL-200 cast iron
Wear plate	EN-GJL-200 cast iron
Non-return valve	check-valve, NBR
Shaft	C45 steel
Mechanical seal	Silicon carbide
Elastomers	NBR
Lubrication	grease



Engine

Supply	electric
Type	single-phase TEFC
No. poles	2
Tension supply	230 V
Frequency	50 Hz
Rated power	2,2 kW - 3 HP
Rated speed	2.820 rpm
Class efficiency	IE2 - IEC 60034-30
Max efficiency	74,0 %
Protection rating	IP55
Insulation class	F
Rpm type	fixed
Service type	continuous - S1

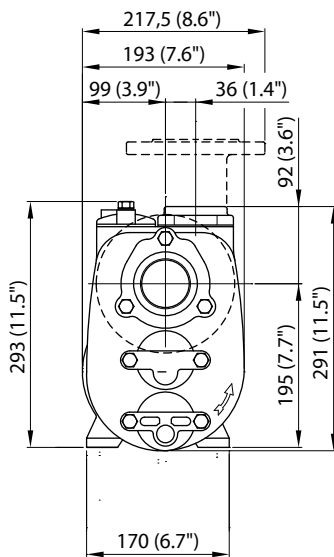
JE 2-120 G10 MM20



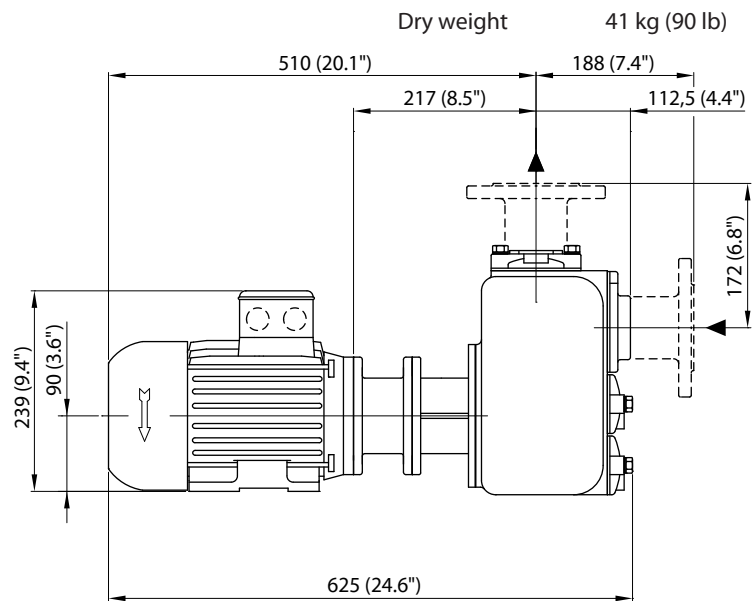
Arrangement

Model	close-coupling E
Dimensions	188 x 625 x 313 mm (7 x 25 x 12 ")
Material	cast iron
Coatings	bicomponent, average thickness of 80 µm
Color	RAL 5010 blue (standard)
Features	close-coupling with rigid coupling
Height connection	0,2 m (0.7 ft)

Dimensions



Weight



Dry weight 41 kg (90 lb)

EN ISO 9001:2008 REG. NO 44 100 091767



Varisco S.p.A. has certified its Quality Management System in accordance with the requirements of the ISO 9001:2008 international standards. The quality of the product comes from the quality of the processes: standardise activities, enhance human resources, pursue a logic of continuous improvement aiming for the constant satisfaction of its Customers.

Varisco S.p.A. Terza strada, 9 - Z.I. Nord 35129 PADOVA - Italy
tel +39 049 8294 111 fax +39 049 80 76 762
export@variscopspa.com