



Data sheet

Hydraulic data

Minimum efficiency index (MEI)	0.4
Min. fluid temperature T_{\min}	-20 °C
Max. fluid temperature T_{\max}	140 °C
Max. ambient temperature T_{\max}	40 °C
Maximum operating pressure PN	16 bar
Note on dimensioning	16 bar to 120 °C, 13 bar to 140 °C

Motor data

Mains connection	3~400 V, 50 Hz
Voltage tolerance	±10 %
Motor efficiency class	IE2
Rated power P_2	0.55 kW
Rated current I_N	1.4 A
Rated speed n	1450 1/min
Power factor $\cos \varphi$	0.66
Motor efficiency η_M 50%	75.4 %
Motor efficiency η_M 75%	78.5 %
Motor efficiency η_M 100%	78.1 %
Motor winding up to 3 kW	-
Motor winding from 4 kW	-
Insulation class	F
Protection class motor	IP55
Motor protection	no

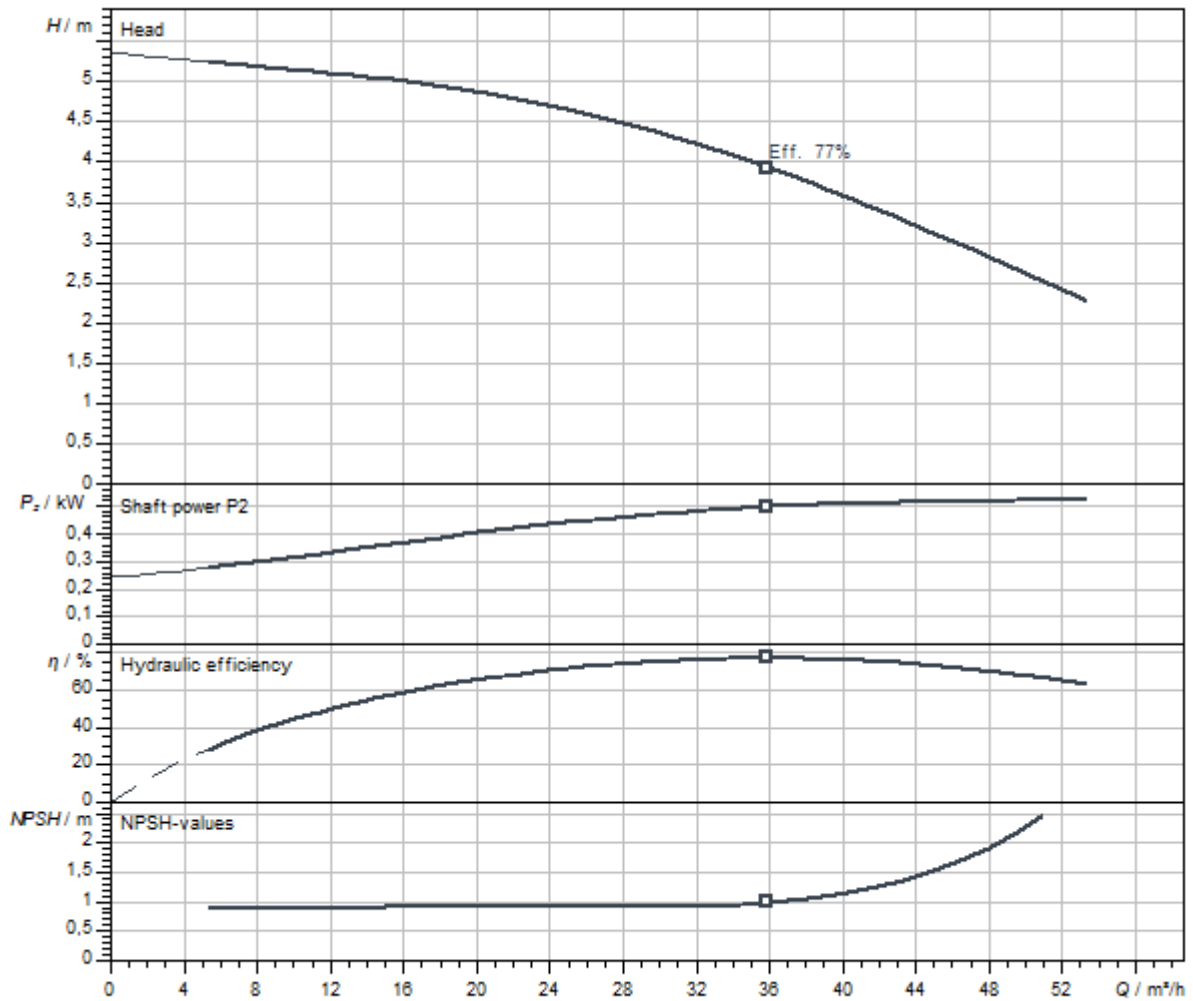
Materials

Pump housing	5.1301/EN-GJL-250 KTL-coated
Impeller	Grey cast iron EN-GJL-200
Shaft	Stainless steel
Mechanical seal	AQ1EGG

Installation dimensions

Pipe connection on the suction side DN_s	DN 65
Pipe connection on the discharge side DN_d	DN 50

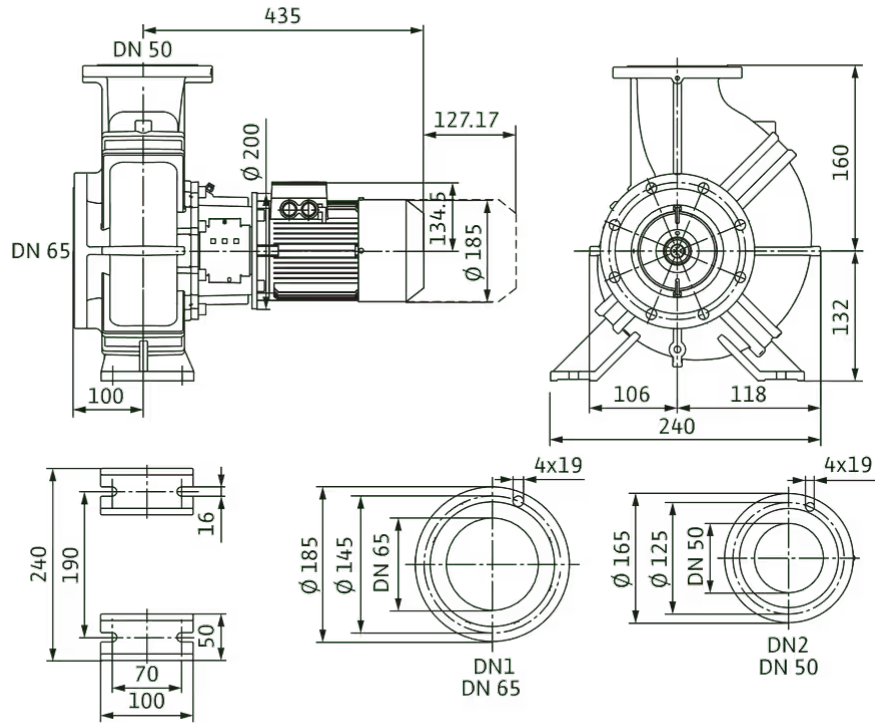
Pump curves



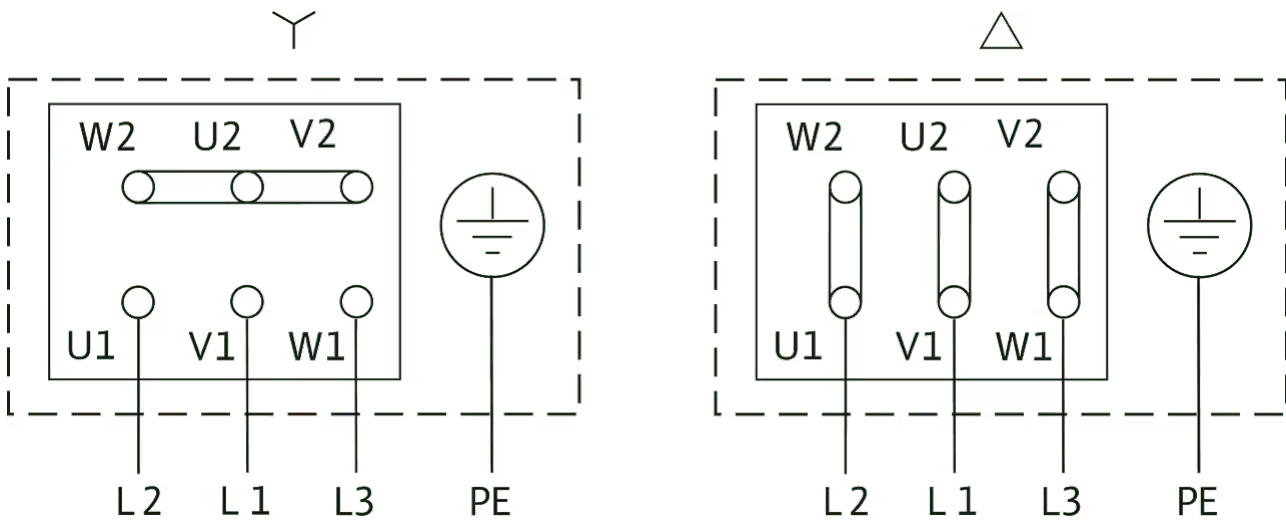
Fluid media	Water 100 %
Fluid temperature <i>T</i>	20,00 °C
speed at duty point <i>n hydr. @ OP</i>	1.456 1/min
Impeller diameter <i>d imp.</i>	126 mm

Dimensions and dimensions drawings

Atmos GIGA-B 50/105-0,55/4



Wiring diagram



Δ: Connection diagram delta connection

Y: Connection diagram star connection

Motor protection switch required on-site. Check the direction of rotation! To change the direction of rotation, exchange any two phases.

$P_2 \leq 3$ kW 3~400 V Y
3~230 V Δ

$P_2 \geq 4$ kW 3~690 V Y
3~400 V Δ

After removing the bridges, Y-Δ start is possible.

Ordering information

Product data

Brand	Wilo
Product description	Atmos GIGA-B 50/105-0,55/4
Article number	9126718
EAN number	4048482862132
Colour	Green
Minimum order quantity	1
Date of sales availability	2021-07-01

Dimension, weight

Length with packaging	1200 mm
Length <i>L</i>	535 mm
Height with packaging	1200 mm
Height <i>H</i>	292 mm
Width with packaging	800 mm
Width <i>W</i>	240 mm
Gross weight, approx. <i>m</i>	48 kg
Net weight, approx. <i>m</i>	45 kg

Packaging

Number per layer	2
Packaging property	Transport packaging
Packaging type	Cardboard box
Pieces per pallet	4

Tender text

Single-stage glanded centrifugal pump in monobloc design for installation on a base including foot on the pump housing.

Low-vibration and low-noise monobloc design with lantern and rigidly connected standard motor.

With force-flushed, bidirectional bellows mechanical seal (from 37 kW/4-pole, optionally available with a

cartridge mechanical seal in back pull-out design for mechanical seal replacement without dismantling the motor) and cavitation-reducing impeller.

Flange with R 1/8 pressure measuring connections. All grey cast iron components are cathodic-coated.

Motors in IE3 technology as standard. Pumps with motors ≥ 5.5 kW are equipped as standard with a PTC thermistor sensor for motor protection.

Operating Data

Fluid temperature T	-20 °C
Ambient temperature T	-15 °C
Maximum operating pressure P_N	16 bar
Note on dimensioning	16 bar to 120 °C, 13 bar to 140 °C
Minimum efficiency index (MEI)	0.4

Motor data

Motor efficiency class	IE2
Mains connection	3~400 V, 50 Hz
Voltage tolerance	± 10 %
Rated power P_2	550 W
Rated speed n	1450 1/min
Rated current I_N	1.4 A
Power factor $\cos \varphi$	0.66
Motor efficiency η_M 50%	75.4 %
Motor efficiency η_M 75%	78.5 %
Motor efficiency η_M 100%	78.1 %
Insulation class	F
Protection class	IP55

Materials

Pump housing	5.1301/EN-GJL-250 KTL-coated
Impeller	Grey cast iron
Shaft	Stainless steel
Shaft seal	AQ1EGG

Installation dimensions

Pipe connection on the suction side DN_s	DN 65
Pipe connection on the discharge side DN_d	DN 50

Ordering information

Brand	Wilo
Product description	Atmos GIGA-B 50/105-0,55/4
Net weight, approx. m	45 kg
Article number	9126718 

Services

With Wilo as your partner, you can not only be sure of choosing high-quality product solutions, but also of benefiting from a comprehensive, worry-free package of well thought-out services. We collaborate to develop a service concept tailored to your individual needs; with our expertise and personal consultancy, we make sure that the operation of your systems is as energy-efficient, reliable and economical as possible. All the while our competent Wilo service technicians are ready to assist you with fast, reliable and on-time support.

Recommended services

Wilo-Live Assistant Service	2216415
-----------------------------	---------

Supervision Glanded pumps	2219321
---------------------------	---------

Commissioning Glanded pumps	2219391
-----------------------------	---------

More suitable services

Extended warranty glanded pumps	2219590
---------------------------------	---------

Installation Glanded pumps	2219356
----------------------------	---------

Maintenance BASIC Glanded pumps	2219531
---------------------------------	---------

Maintenance COMFORT Glanded pumps	2219493
-----------------------------------	---------

Maintenance PREMIUM Glanded pumps	2219546
-----------------------------------	---------

System Optimisation Glanded pumps	2219251
-----------------------------------	---------

Energy Solutions Glanded pumps	2219240
--------------------------------	---------

Repair Glanded pumps	2219610
----------------------	---------