
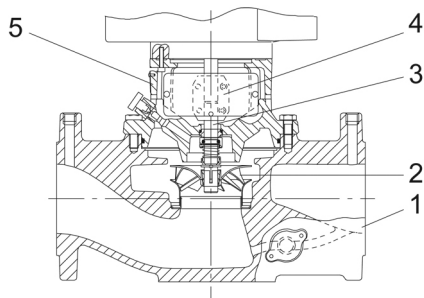
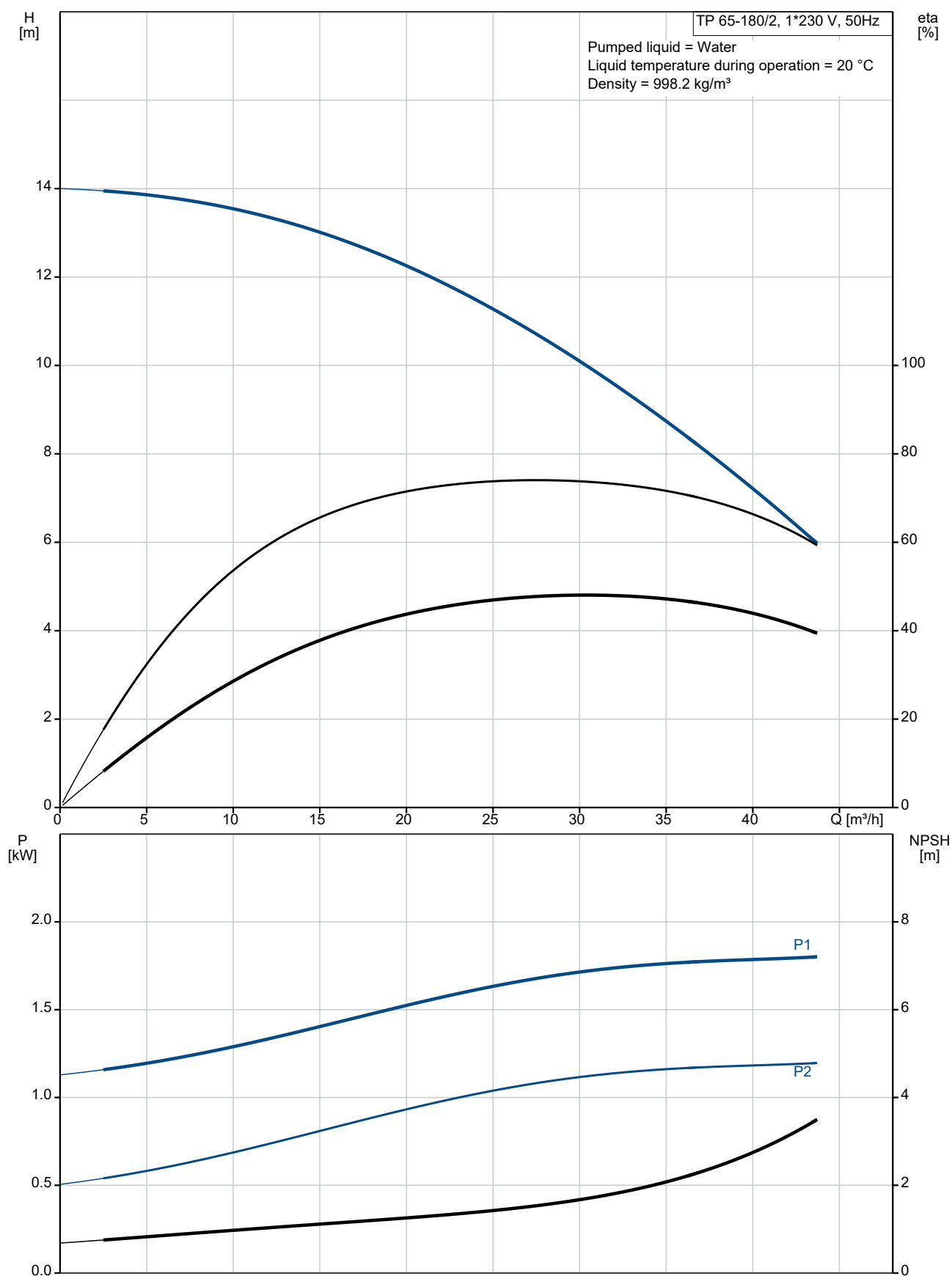


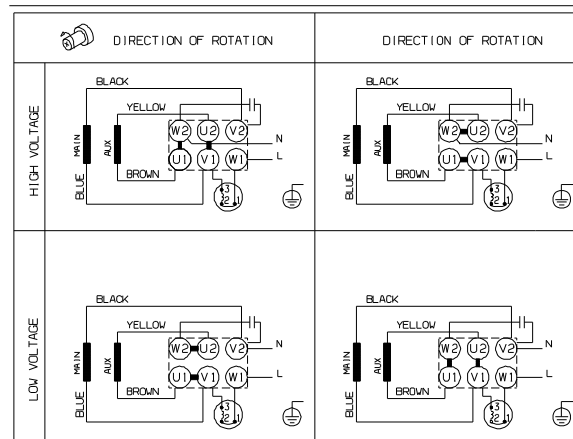
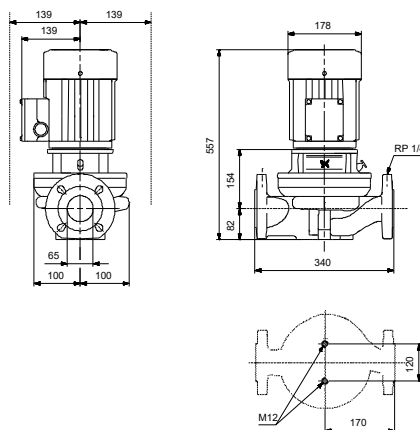
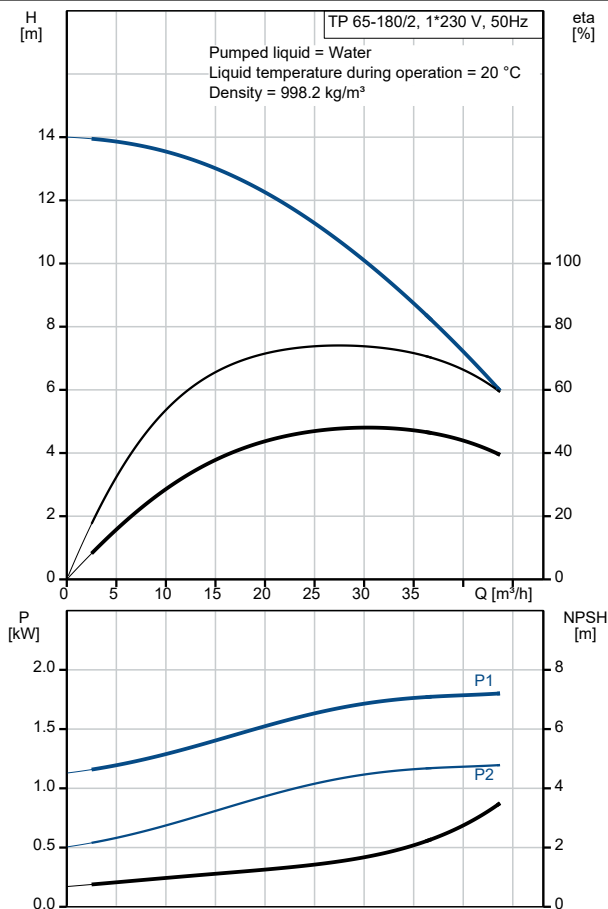
Qty.	Description
1	<p data-bbox="199 331 486 362">TP 65-180/2 A-F-A-BUBE</p> <div data-bbox="212 376 574 750">  </div> <p data-bbox="592 734 1064 759">Note! Product picture may differ from actual product</p> <p data-bbox="199 766 478 792">Product No.: On request</p> <p data-bbox="199 824 1297 853">Single-stage, close-coupled, volute pump with in-line suction and discharge ports of identical diameter.</p> <p data-bbox="199 853 1401 907">The pump is of the top-pull-out design, i.e. the power head (motor, pump head and impeller) can be removed for maintenance or service while the pump housing remains in the pipework.</p> <p data-bbox="199 911 831 940">The pump is fitted with an unbalanced rubber bellows seal.</p> <p data-bbox="199 943 1382 996">The shaft seal is according to EN 12756. Pipework connection is via PN 6/10 DIN flanges (EN 1092-2 and ISO 7005-2).</p> <p data-bbox="199 1001 817 1030">The pump is fitted with a fan-cooled asynchronous motor.</p> <p data-bbox="199 1032 1449 1106">The product's minimum efficiency index (MEI) is greater or equal to 0.70. This is by the Commission Regulation (EU) considered as an indicative benchmark for best-performing water pump available on the market as from 1 January 2013.</p> <p data-bbox="199 1117 1455 1191">Cast-iron parts have an epoxy-based coating made in a cathodic electro-deposition (CED) process. CED is a high-quality dip-painting process where an electrical field around the products ensures deposition of paint particles as a thin, well-controlled layer on the surface.</p> <p data-bbox="199 1232 284 1263">Pump</p> <div data-bbox="207 1274 632 1570">  </div> <p data-bbox="199 1597 386 1626">1: Pump housing</p> <p data-bbox="199 1628 319 1657">2: Impeller</p> <p data-bbox="199 1659 288 1688">3: Shaft</p> <p data-bbox="199 1691 327 1720">4: Coupling</p> <p data-bbox="199 1722 354 1751">5: Pump head</p> <p data-bbox="199 1749 1385 1800">The pump housing is provided with a replaceable stainless steel/PTFE neck ring to reduce the amount of liquid running from the discharge side of the impeller to the suction side.</p> <p data-bbox="199 1805 727 1834">The impeller is secured with a split cone with nut.</p> <p data-bbox="199 1836 1452 1910">The pump is fitted with an unbalanced rubber bellows seal with torque transmission across the spring and around the bellows. Due to the bellows, the seal does not wear the shaft, and the axial movement is not prevented by deposits on the shaft.</p> <p data-bbox="199 1919 346 1948">Primary seal:</p> <ul data-bbox="236 1951 922 2009" style="list-style-type: none"> • Rotating seal ring material: tungsten carbide (WC) • Stationary seat material: carbon graphite, resin-impregnated <p data-bbox="199 2009 604 2038">This is a widely used material pairing.</p> <p data-bbox="199 2040 1064 2069">If the pumped liquid contains particles, wear on the seal faces must be expected.</p>

Qty.	Description
	<p>Due to the favourable lubricating properties of carbon graphite, the seal is suitable for use even under poor lubricating conditions, such as hot water.</p> <p>However, under such conditions, wear on the carbon graphite face reduces seal life.</p> <p>Secondary seal material: EPDM (ethylene-propylene rubber)</p> <p>EPDM has excellent resistance to hot water. EPDM is not suitable for mineral oils.</p> <p>A circulation of liquid through the duct of the air vent screw ensures lubrication and cooling of the shaft seal.</p> <p>The flanges have tapings for mounting of pressure gauges.</p> <p>The motor stool forms connection between the pump housing and the motor, and is equipped with a manual air vent screw for venting of the pump housing and the shaft seal chamber. The sealing between motor stool and pump housing is an O-ring.</p> <p>The central part of the motor stool is provided with guards for protection against the shaft and coupling. Motor and pump shaft are connected via a shell coupling.</p> <p>Motor</p> <p>The motor is a totally enclosed, fan-cooled motor with principal dimensions to IEC and DIN standards. Electrical tolerances comply with IEC 60034.</p> <p>The motor is flange-mounted with tapped-hole flange (FT).</p> <p>Motor-mounting designation in accordance with IEC 60034-7: IM B 14, IM V 18 (Code I) / IM 3601, IM 3611 (Code II).</p> <p>The motor has built-in thermal protection (PTO current and temperature sensors) in accordance with IEC 60034-11 and requires no further motor protection. The protection reacts to both slow- and quick-rising temperatures, e.g. constant overload and stalled conditions.</p> <p>As the thermal protection incorporates automatic reset, the motor must be connected in a way which ensures that the automatic reset cannot cause accidents.</p> <p>Further product details</p> <p>Technical data</p> <p>Liquid:</p> <p>Liquid temperature range: 0 .. 140 °C</p> <p>Selected liquid temperature: 20 °C</p> <p>Technical:</p> <p>Materials:</p> <p>Installation:</p> <p>t max amb: 40 °C</p> <p>Maximum operating pressure: 10 bar</p> <p>Electrical data:</p> <p>Starting current: 390 %</p> <p>Others:</p>

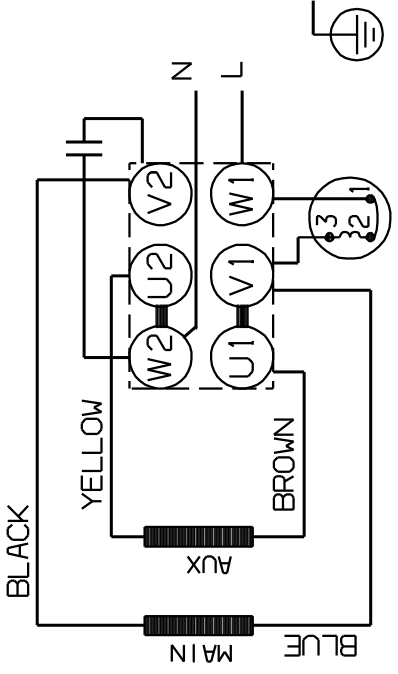
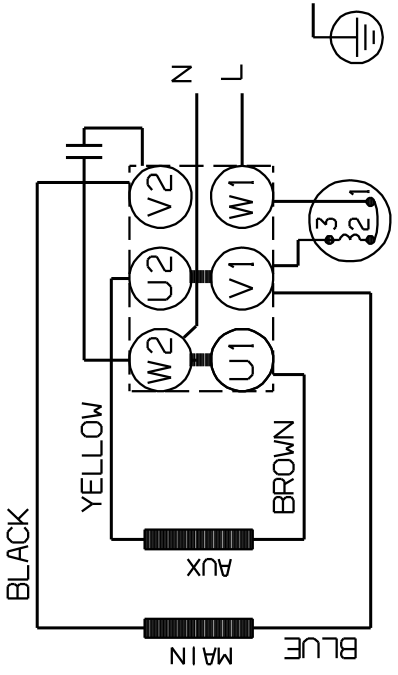
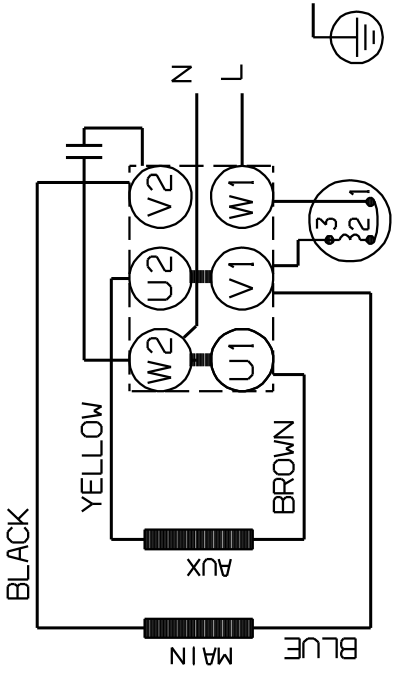
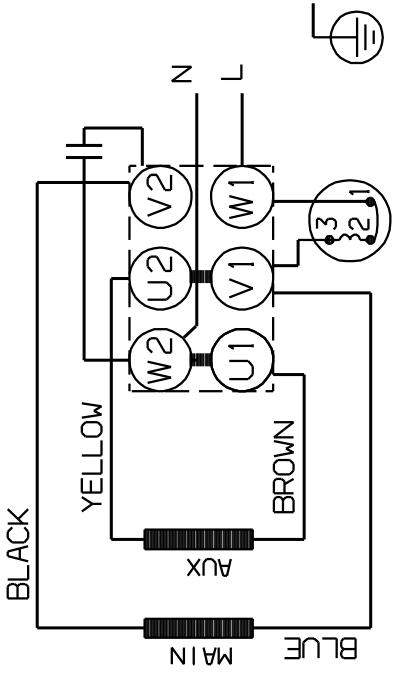
On request TP 65-180/2 A-F-A-BUBE 50 Hz



Description	Value
General information:	
Product name:	TP 65-180/2 A-F-A-BUBE
Product No:	On request
EAN number:	On request
Technical:	
Pump speed on which pump data are based:	2830 rpm
Rated flow:	29 m³/h
Rated head:	11.4 m
Maximum head:	180 dm
Actual impeller diameter:	102 mm
Code for shaft seal:	BUBE
Curve tolerance:	ISO9906:2012 3B
Pump version:	A
Materials:	
Pump housing:	Cast iron
Pump housing:	EN-JL1040
Pump housing:	A48-40 B
Impeller:	Stainless steel
Impeller:	1.4301
Impeller:	304
Material code:	A
Installation:	
t max amb:	40 °C
Maximum operating pressure:	10 bar
Type of connection:	DIN
Size of connection:	DN 65
Pressure rating for connection:	PN 6/10
Port-to-port length:	340 mm
Connect code:	F
Liquid:	
Pumped liquid:	Water
Liquid temperature range:	0 .. 140 °C
Selected liquid temperature:	20 °C
Density:	998.2 kg/m³
Electrical data:	
Motor type:	90LB
Rated power - P2:	1.5 kW
Mains frequency:	50 Hz
Rated voltage:	1 x 220-230/240 V
Rated current:	9.90/8.90 A
Starting current:	390 %
Cos phi - power factor:	0.98/0.99
Rated speed:	2750/2740 rpm
Motor efficiency at full load:	72-70 %
Number of poles:	2
Enclosure class (IEC 34-5):	55 Dust/Jetting
Insulation class (IEC 85):	F
Built-in motor protection:	PTO
Motor No:	85215706
Others:	
Minimum efficiency index, MEI ≥:	0.70
Net weight:	43.7 kg
Gross weight:	49.6 kg
Shipping volume:	0.16 m³



On request TP 65-180/2 A-F-A-BUBE 50 Hz

<p>DIRECTION OF ROTATION</p>	
<p>DIRECTION OF ROTATION</p>	
<p>HIGH VOLTAGE</p>	
<p>LOW VOLTAGE</p>	

Note! All units are in [mm] unless others are stated.



Company name:

Created by:

Phone:

Date:

27/10/2021

Order Data:

Product name: TP 65-180/2

Amount: 1

Product No: On request

Total: Price on request
