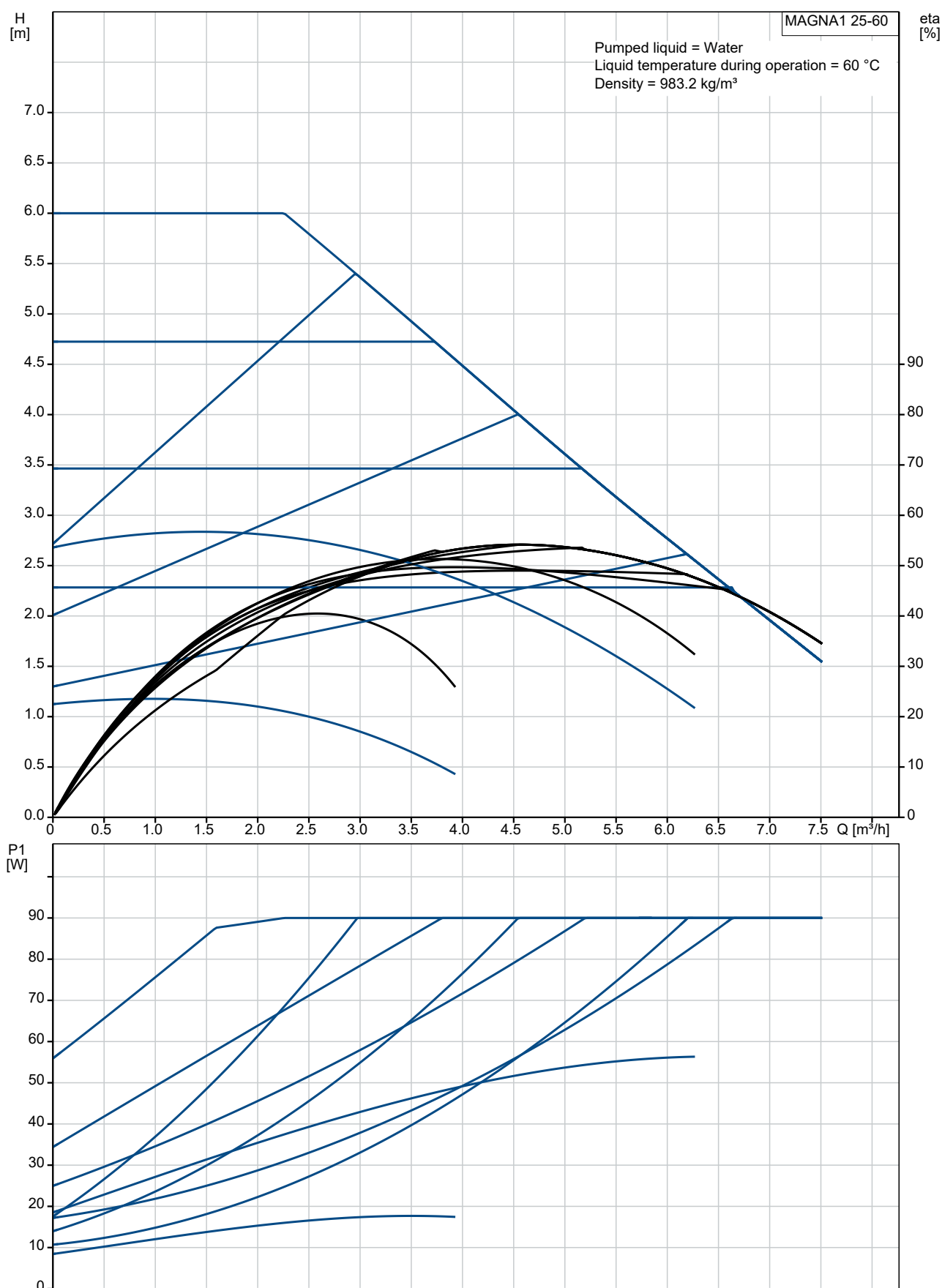
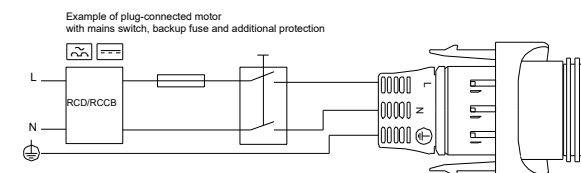
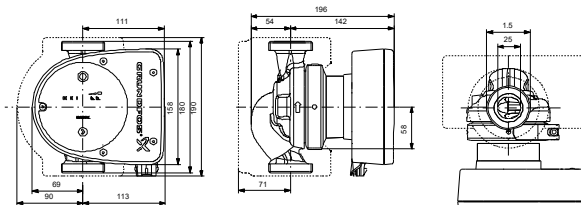
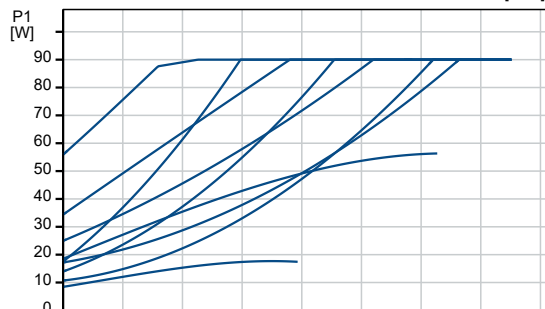
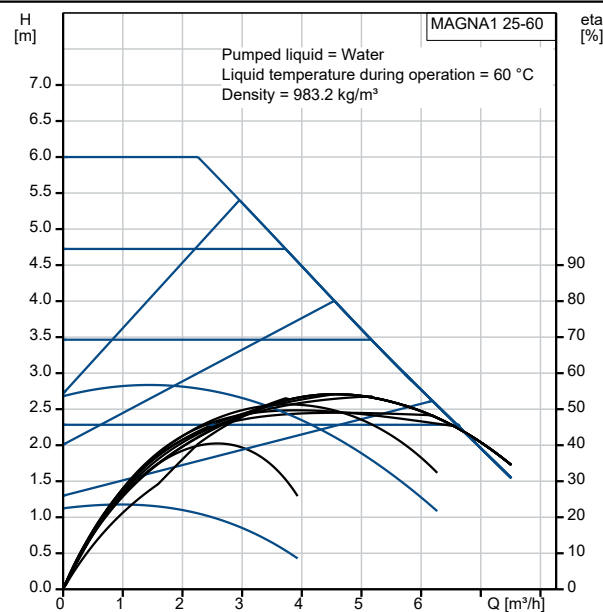


| Qty. | Description  |
|------|--|
| 1    | <p><b>MAGNA1 25-60</b></p>  <p><b>Note! Product picture may differ from actual product</b></p> <p>Product No.: On request</p> <p>The Grundfos MAGNA1 is a circulator pump with permanent magnet motor and easy selection of pump setting. The MAGNA1 will fit both heating, cooling and domestic hot water circulation applications perfectly, making it the obvious choice for almost any building project – old or new.</p> <p>The pump is a canned-rotor type, i.e. pump and motor form an integral unit without shaft seal and with only two gaskets for sealing.</p> <p>The bearings are lubricated by the pumped liquid. A pump with no maintenance requirements and extremely low life cycle cost.</p> <p>The pump has an intuitive user interface, which is especially fit for replacement of older circulators. The ideal choice for basic performance needs in applications where system communication is not required.</p> |

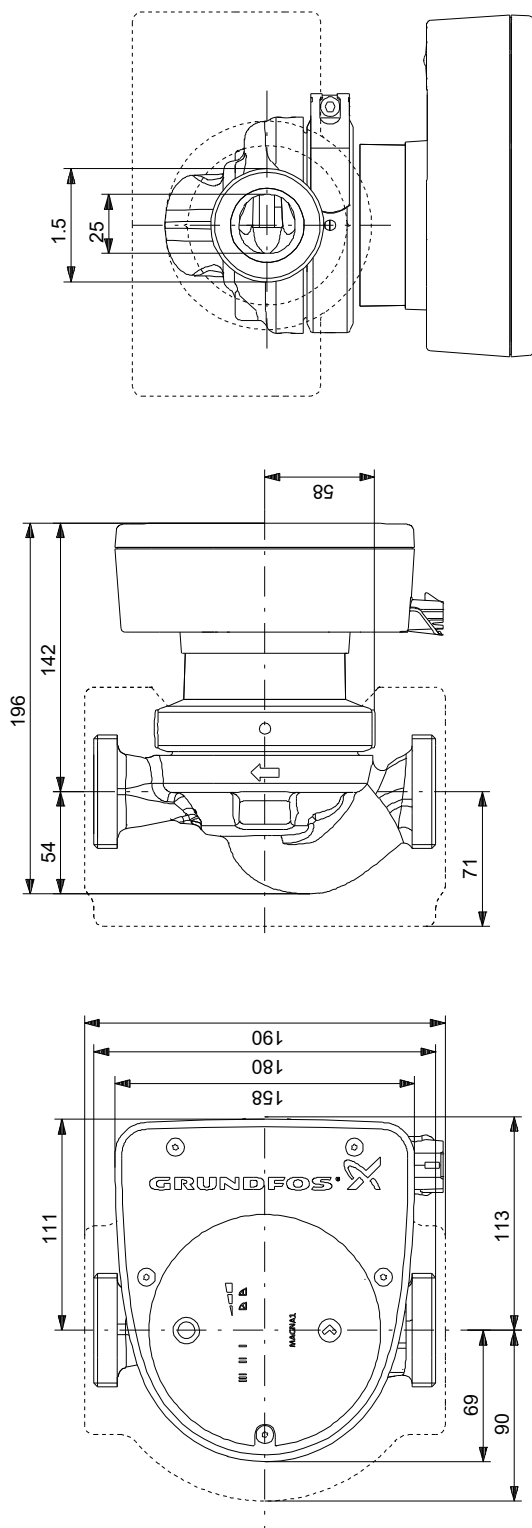
## On request MAGNA1 25-60



| Description                   | Value          |
|-------------------------------|----------------|
| <b>General information:</b>   |                |
| Product name:                 | MAGNA1 25-60   |
| Product No:                   | On request     |
| EAN number:                   | On request     |
| <b>Technical:</b>             |                |
| Head max:                     | 60 dm          |
| TF class:                     | 110            |
| Approvals:                    | CE,VDE,EAC     |
| Model:                        | A              |
| <b>Materials:</b>             |                |
| Pump housing:                 | Cast iron      |
| Pump housing:                 | EN-GJL-200     |
| Pump housing:                 | ASTM A48-200B  |
| Impeller:                     | PES 30%GF      |
| <b>Installation:</b>          |                |
| Range of ambient temperature: | 0 .. 40 °C     |
| Maximum operating pressure:   | 10 bar         |
| Pipe connection:              | G 1 1/2"       |
| Pressure rating:              | PN10           |
| Port-to-port length:          | 180 mm         |
| <b>Liquid:</b>                |                |
| Pumped liquid:                | Water          |
| Liquid temperature range:     | -10 .. 110 °C  |
| Selected liquid temperature:  | 60 °C          |
| Density:                      | 983.2 kg/m³    |
| <b>Electrical data:</b>       |                |
| Power input - P1:             | 9 .. 92 W      |
| Mains frequency:              | 50 / 60 Hz     |
| Rated voltage [V]:            | 1 x 230 V      |
| Maximum current consumption:  | 0.09 .. 0.74 A |
| Enclosure class (IEC 34-5):   | X4D            |
| Insulation class (IEC 85):    | F              |
| <b>Others:</b>                |                |
| Energy (EEI):                 | 0.22           |
| Environmental approvals:      | CN ROHS        |
| Net weight:                   | 4.38 kg        |
| Gross weight:                 | 4.78 kg        |
| Shipping volume:              | 0.012 m³       |



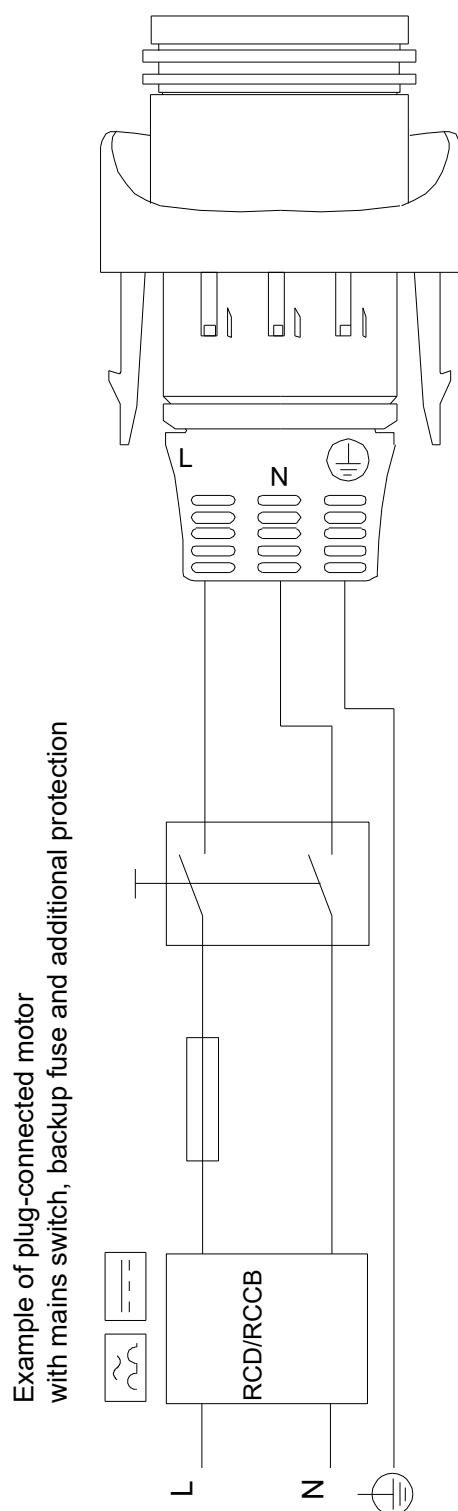
## On request MAGNA1 25-60



Note! All units are in [mm] unless others are stated.

Disclaimer: This simplified dimensional drawing does not show all details.

## On request MAGNA1 25-60



Note! All units are in [mm] unless others are stated.



| Position | Your pos. | Product name | Amount | Product No | Total            |
|----------|-----------|--------------|--------|------------|------------------|
|          |           | MAGNA1 25-60 | 1      | On request | Price on request |
|          |           |              |        |            |                  |