

Qty.	Description
------	-------------

1	MAGNA3 25-120
---	---------------



Note! Product picture may differ from actual product

Product No.: [97924248](#)

The Grundfos MAGNA3 is a circulator pump with permanent magnet motor that will fit both heating, cooling and domestic hot water circulation applications perfectly, making it the obvious choice for almost any building project – old or new.

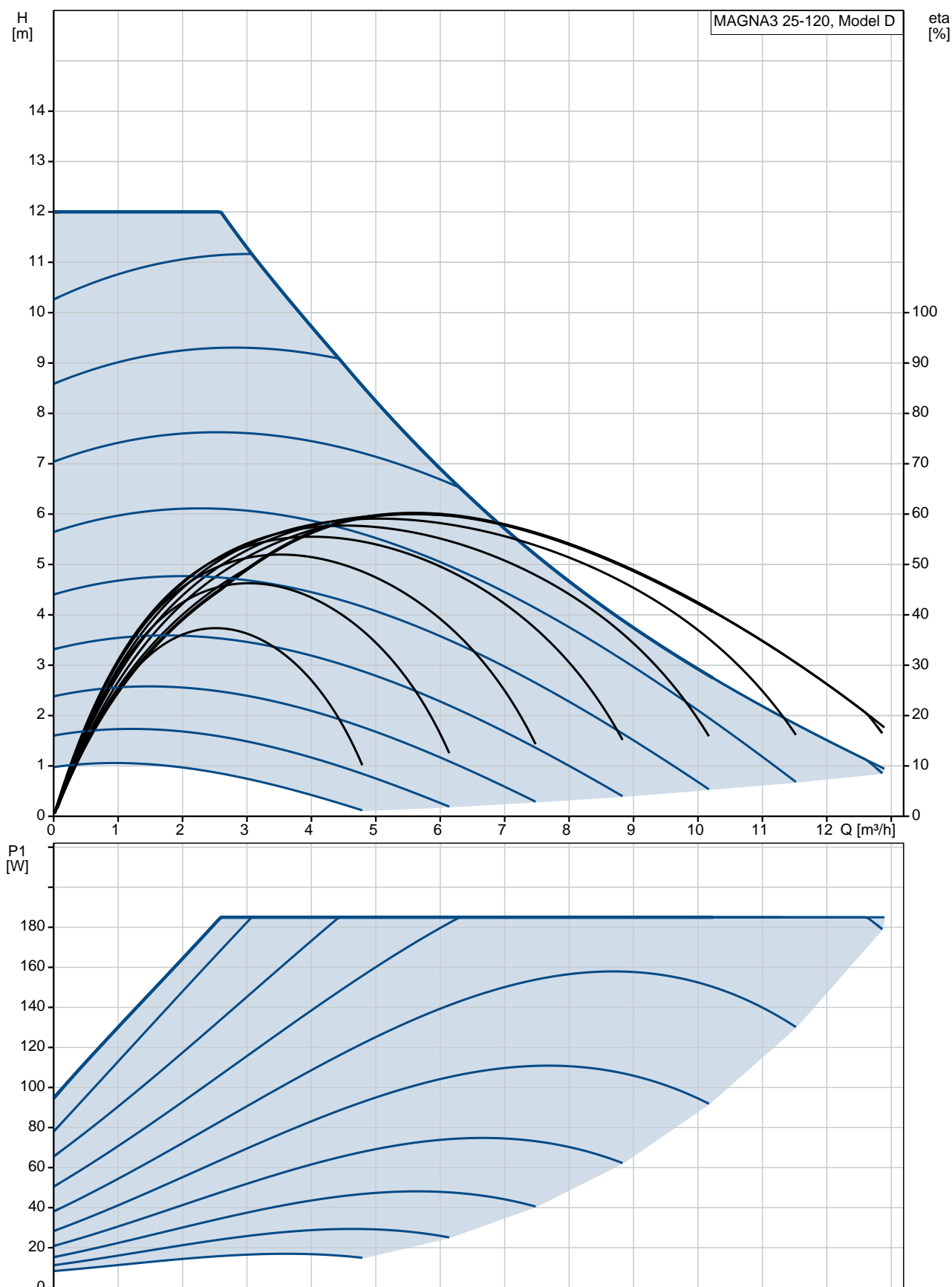
With its unrivalled efficiency, all-encompassing range and built-in communication capabilities plus functionalities replacing system components, the MAGNA3 is ideal for building owners, engineers and specifiers looking to create high-performance systems for buildings.

The MAGNA3 is a canned-rotor type, i.e. pump and motor form an integral unit without shaft seal and with only two gaskets for sealing. The bearings are lubricated by the pumped liquid.

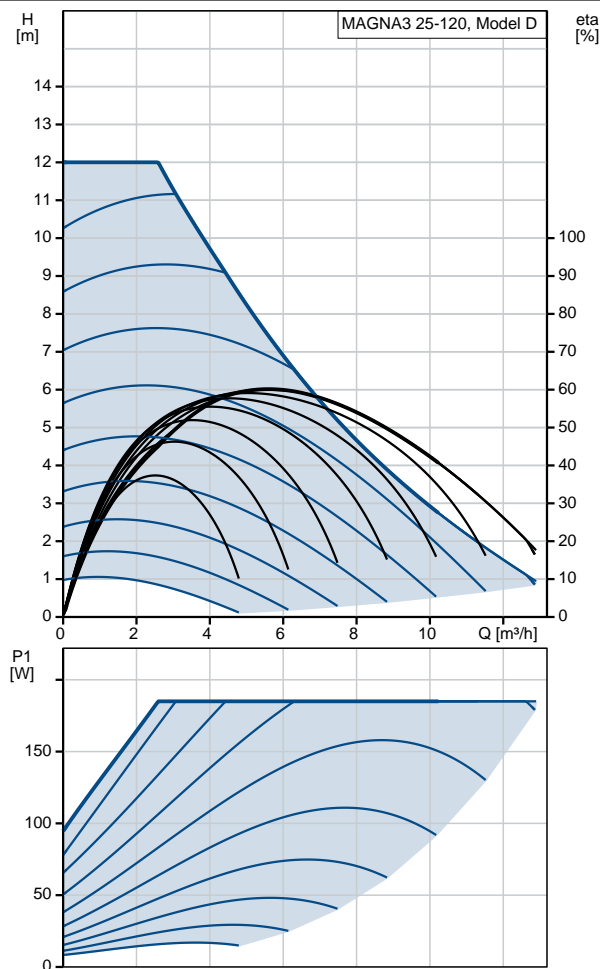
The innovative clamp with only one screw enables easy repositioning of the pump head.

The MAGNA3 is a pump with no maintenance requirements and with extremely low Life Cycle Cost.

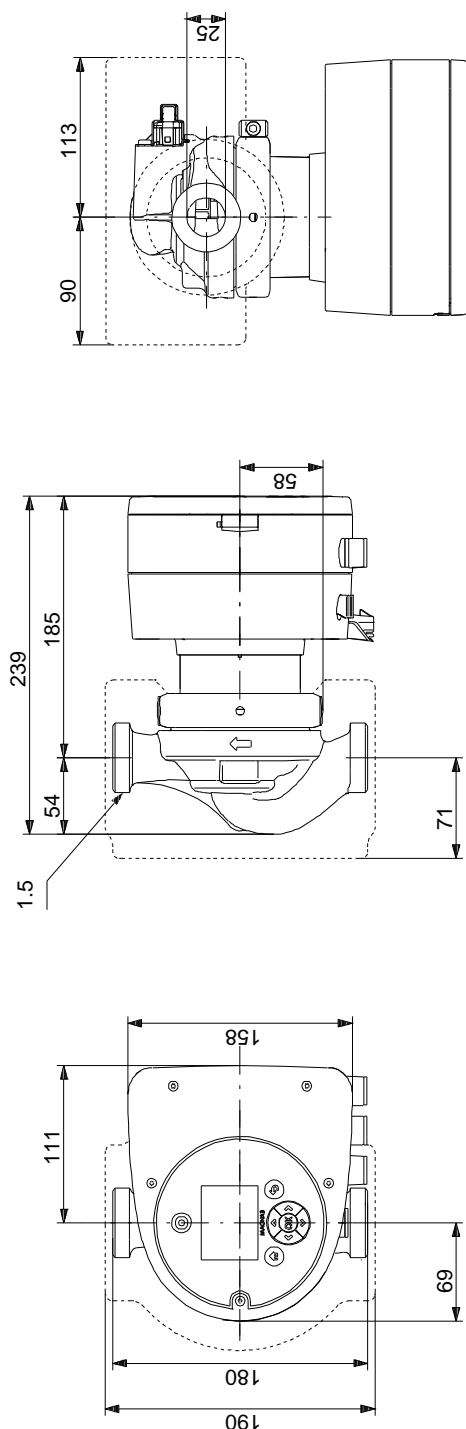
## 97924248 MAGNA3 25-120



Description	Value
<b>General information:</b>	
Product name:	MAGNA3 25-120
Product No:	97924248
EAN number:	5710626493234
	5710626493234
<b>Technical:</b>	
Rated flow:	5.56 m³/h
Rated head:	7.469 m
Head max:	120 dm
TF class:	110
Approvals on nameplate:	CE,VDE,EAC,CN ROHS,WEEE
Model:	D
<b>Materials:</b>	
Pump housing:	Cast iron
	EN-GJL-200
	ASTM A48-200B
Impeller:	PES 30%GF
<b>Installation:</b>	
Range of ambient temperature:	0 .. 40 °C
Maximum operating pressure:	10 bar
Pipe connection:	G 1 1/2"
Pressure rating:	PN10
Port-to-port length:	180 mm
<b>Liquid:</b>	
Pumped liquid:	Water
Liquid temperature range:	-10 .. 110 °C
Selected liquid temperature:	60 °C
Density:	983.2 kg/m³
<b>Electrical data:</b>	
Power input - P1:	9 .. 185 W
Mains frequency:	50 / 60 Hz
Rated voltage:	1 x 230 V
Maximum current consumption:	0.09 .. 1.56 A
Enclosure class (IEC 34-5):	X4D
Insulation class (IEC 85):	F
<b>Others:</b>	
Energy (EEI):	0.18
Net weight:	4.81 kg
Gross weight:	5.27 kg
Shipping volume:	0.015 m³
Danish VVS No.:	380790120
Swedish RSK No.:	5732576
Finnish LVI No.:	4615101
Norwegian NRF no.:	9042329
Country of origin:	DE
Custom tariff no.:	84137030

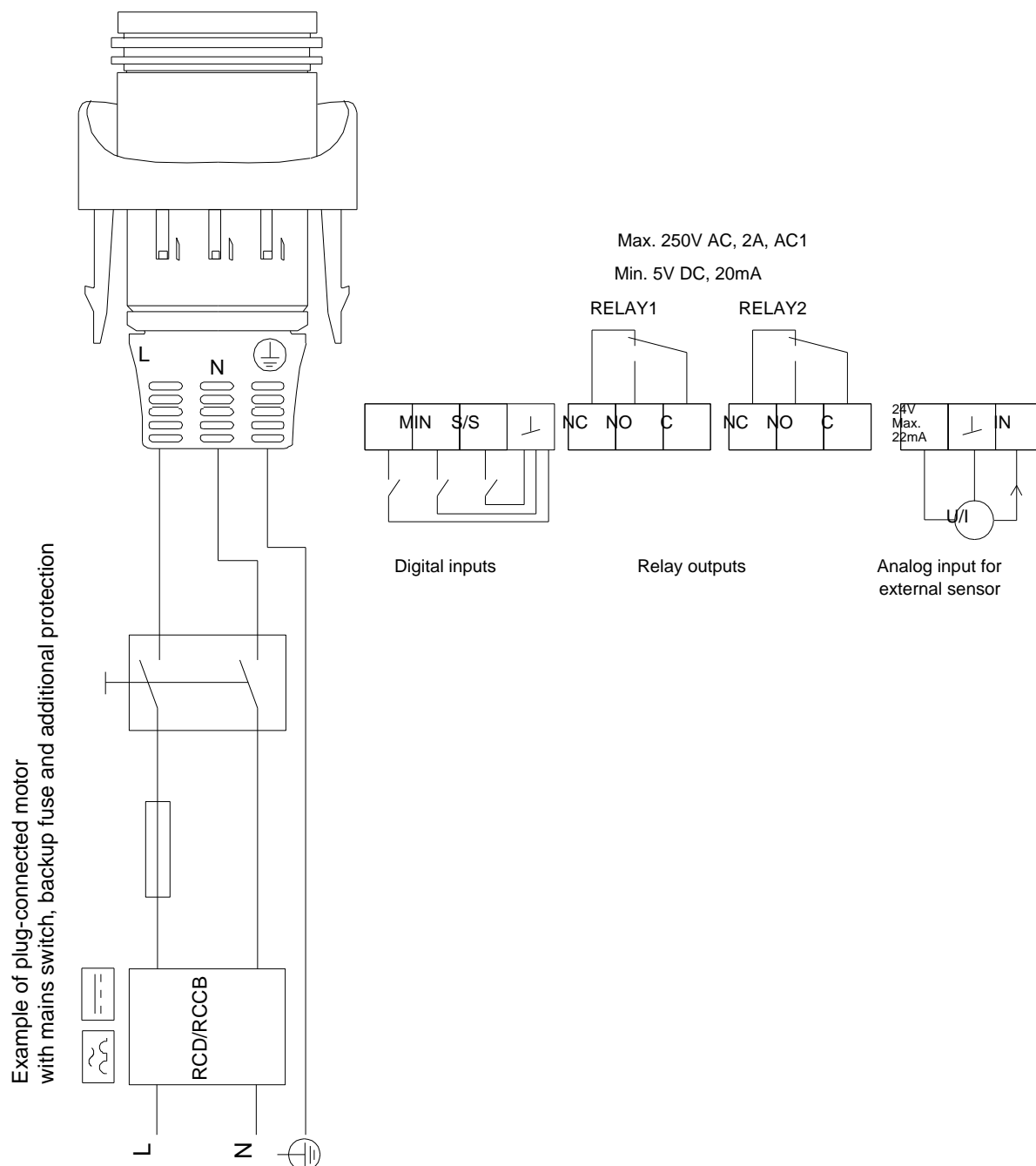


## 97924248 MAGNA3 25-120



Note! All units are in [mm] unless others are stated.  
Disclaimer: This simplified dimensional drawing does not show all details.

## 97924248 MAGNA3 25-120



Note! All units are in [mm] unless others are stated.