
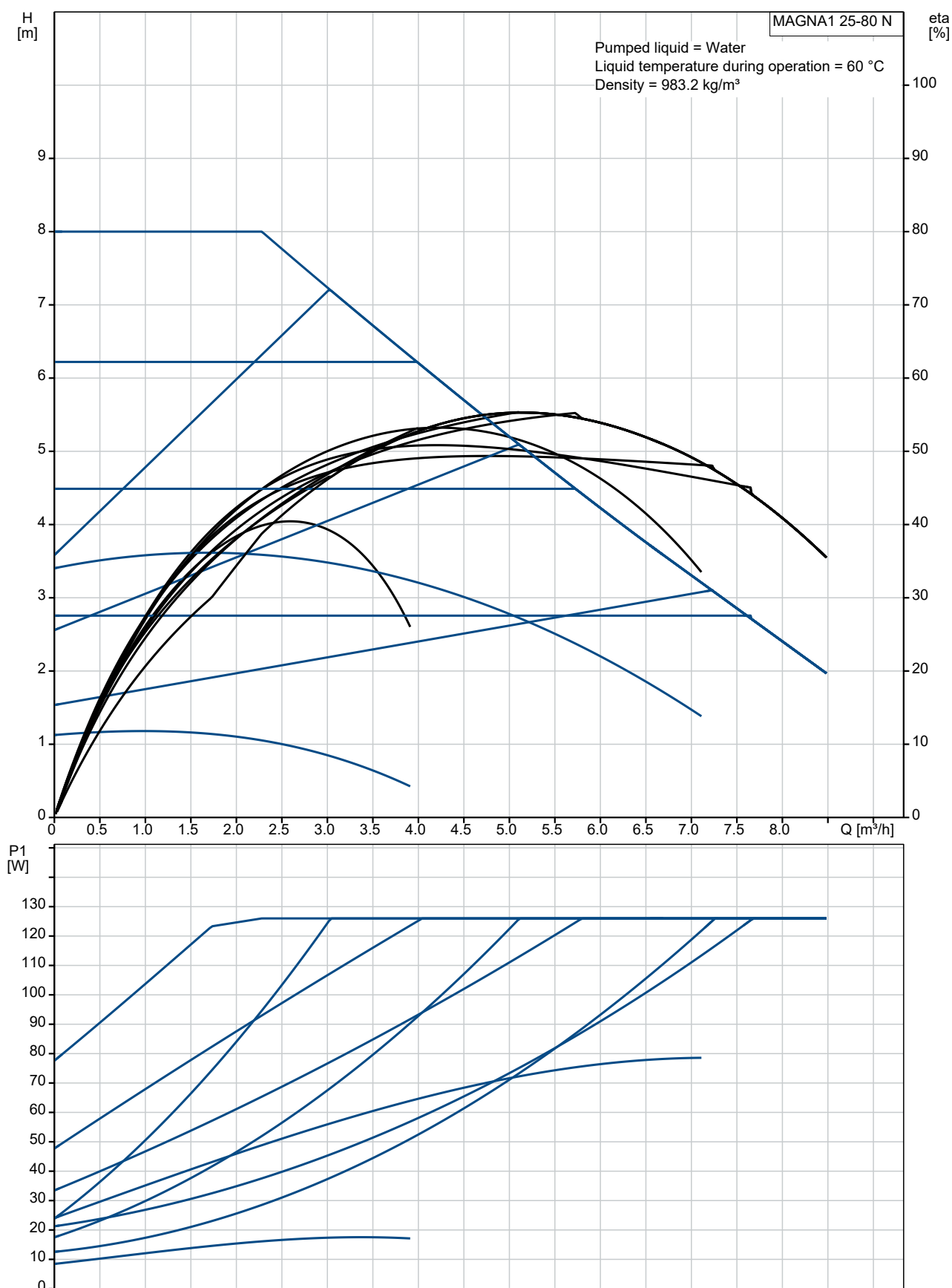
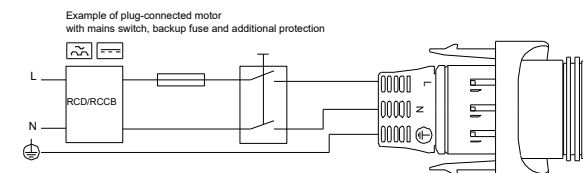
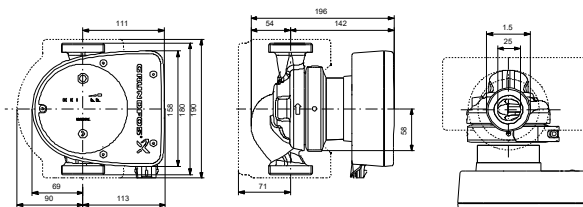
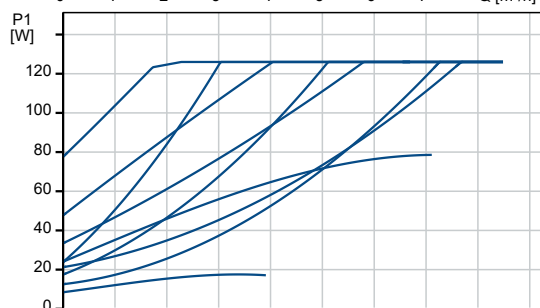
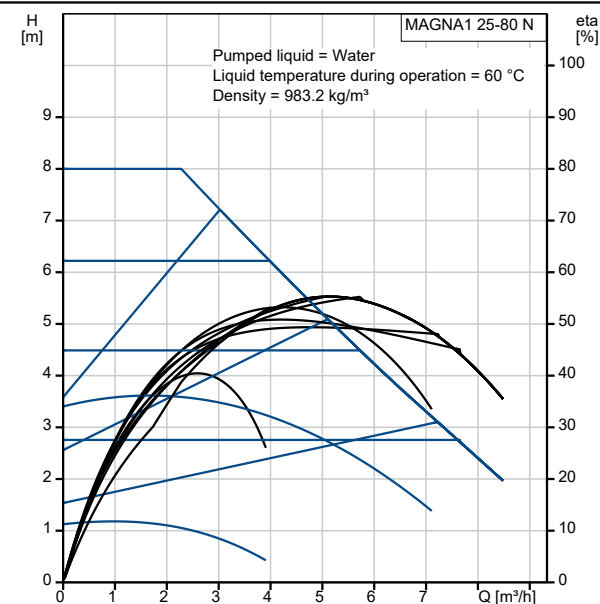


Qty.	Description
1	<p data-bbox="199 331 400 360">MAGNA1 25-80 N</p> <div data-bbox="288 389 515 595">  </div> <p data-bbox="592 595 1064 618">Note! Product picture may differ from actual product</p> <p data-bbox="199 624 478 649">Product No.: On request</p> <p data-bbox="199 685 1445 759">The Grundfos MAGNA1 is a circulator pump with permanent magnet motor and easy selection of pump setting. The MAGNA1 will fit both heating, cooling and domestic hot water circulation applications perfectly, making it the obvious choice for almost any building project – old or new.</p> <p data-bbox="199 799 1385 851">The pump is a canned-rotor type, i.e. pump and motor form an integral unit without shaft seal and with only two gaskets for sealing.</p> <p data-bbox="199 889 1437 938">The bearings are lubricated by the pumped liquid. A pump with no maintenance requirements and extremely low life cycle cost.</p> <p data-bbox="199 976 1437 1025">The pump has an intuitive user interface, which is especially fit for replacement of older circulators. The ideal choice for basic performance needs in applications where system communication is not required.</p>

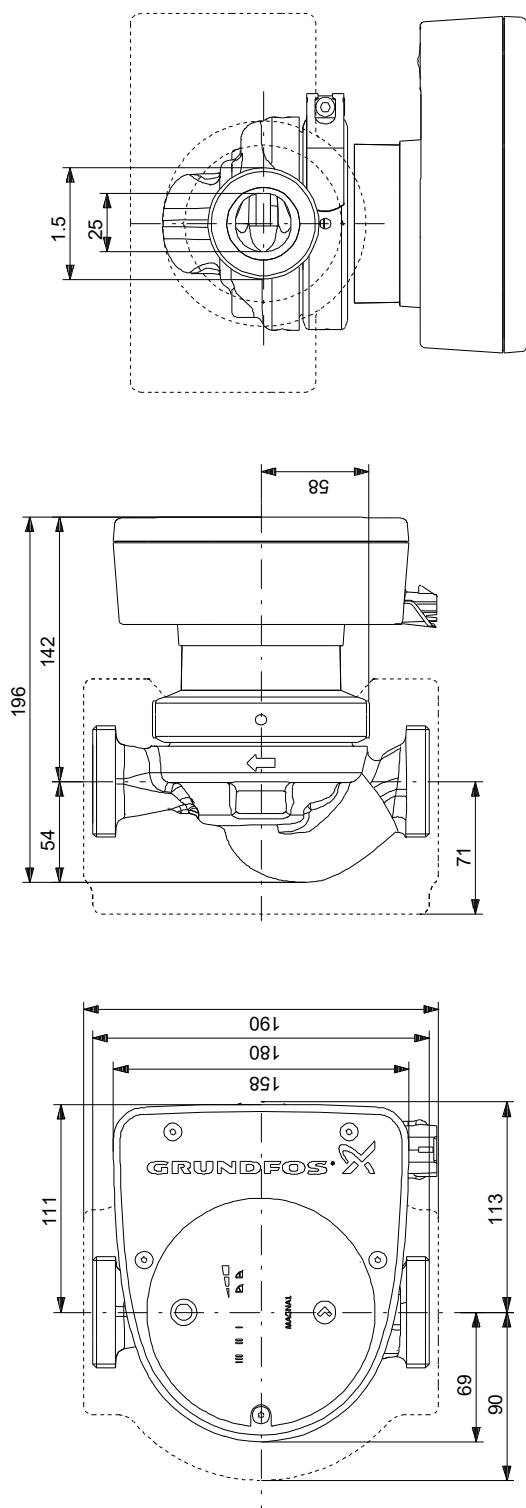
On request MAGNA1 25-80 N 50 Hz



Description	Value
General information:	
Product name:	MAGNA1 25-80 N
Product No:	On request
EAN number:	On request
Technical:	
Head max:	80 dm
TF class:	110
Approvals on nameplate:	CE,VDE,EAC,CN ROHS
Model:	A
Materials:	
Pump housing:	Stainless steel
Pump housing:	EN 1.4308
Pump housing:	ASTM 351 CF8
Impeller:	PES 30%GF
Installation:	
Range of ambient temperature:	0 .. 40 °C
Maximum operating pressure:	10 bar
Pipe connection:	G 1 1/2"
Pressure rating:	PN10
Port-to-port length:	180 mm
Liquid:	
Pumped liquid:	Water
Liquid temperature range:	-10 .. 110 °C
Selected liquid temperature:	60 °C
Density:	983.2 kg/m³
Electrical data:	
Power input - P1:	9 .. 128 W
Mains frequency:	50 Hz
Rated voltage:	1 x 230 V
Maximum current consumption:	0.09 .. 1.03 A
Enclosure class (IEC 34-5):	X4D
Insulation class (IEC 85):	F
Others:	
Energy (EEI):	0.22
Net weight:	4.38 kg
Gross weight:	4.78 kg
Shipping volume:	0.012 m³



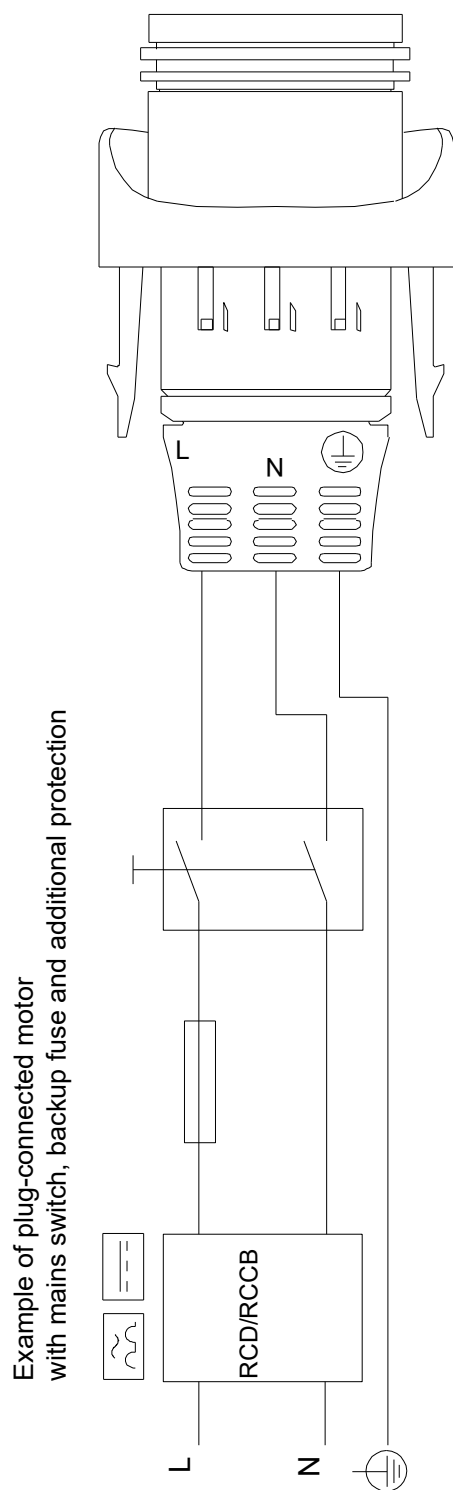
On request MAGNA1 25-80 N 50 Hz



Note! All units are in [mm] unless others are stated.

Disclaimer: This simplified dimensional drawing does not show all details.

On request MAGNA1 25-80 N 50 Hz



Note! All units are in [mm] unless others are stated.



Company name:

Created by:

Phone:

Date:

27/10/2021

Order Data:

Product name: MAGNA1 25-80 N

Amount: 1

Product No: On request

Total: Price on request
