

Qty.	Description
------	-------------

1	TP 32-50/2 A-O-I-BQQE-AX1
---	---------------------------



Note! Product picture may differ from actual product

Product No.: [98282162](#)

Single-stage, close-coupled, volute pump with in-line suction and discharge ports of identical diameter. The pump is of the top-pull-out design, i.e. the power head (motor, pump head and impeller) can be removed for maintenance or service while the pump housing remains in the pipework.

The pump is fitted with an unbalanced rubber bellows seal.

The shaft seal is according to EN 12756. The pump is fitted with a fan-cooled asynchronous motor.

The stainless-steel pump housing makes the pump suitable for circulation of hot water.

Cast-iron parts have an epoxy-based coating made in a cathodic electro-deposition (CED) process. CED is a high-quality dip-painting process where an electrical field around the products ensures deposition of paint particles as a thin, well-controlled layer on the surface.

Pump

The pump housing is provided with a replaceable stainless steel/PTFE neck ring to reduce the amount of liquid running from the discharge side of the impeller to the suction side.

The impeller is secured with a split cone pressed onto the shaft.

The pump is fitted with an unbalanced rubber bellows seal with torque transmission across the spring and around the bellows. Due to the bellows, the seal does not wear the shaft, and the axial movement is not prevented by deposits on the shaft.

Seal faces:

- Rotating seal ring material: silicon carbide (SiC)
- Stationary seat material: silicon carbide (SiC)

This material pairing is used where higher corrosion resistance is required. The high hardness of this material pairing offers good resistance against abrasive particles.

Secondary seal material: EPDM (ethylene-propylene rubber)

EPDM has excellent resistance to hot water. EPDM is not suitable for mineral oils.

A circulation of liquid through the duct of the air vent screw ensures lubrication and cooling of the shaft seal.

The motor stool forms connection between the pump housing and the motor, and is equipped with a manual air vent screw for venting of the pump housing and the shaft seal chamber. The sealing between motor stool and pump housing is an O-ring or a flat gasket.

The central part of the motor stool is provided with guards for protection against the shaft and coupling. Motor and pump shaft are connected via a shell coupling.

Motor

The motor is a totally enclosed, fan-cooled motor with principal dimensions to IEC and DIN standards. Electrical tolerances comply with IEC 60034.

The motor is flange-mounted with tapped-hole flange (FT).

Motor-mounting designation in accordance with IEC 60034-7: IM B 14, IM V 18 (Code I) / IM 3601, IM 3611 (Code II).

The motor has built-in thermal protection (PTO current and temperature sensors) in accordance with IEC 60034-11 and requires no further motor protection. The protection reacts to both slow- and quick-rising temperatures, e.g. constant overload and stalled conditions.

As the thermal protection incorporates automatic reset, the motor must be connected in a way which ensures that the automatic reset cannot cause accidents.

Further product details

Qty.	Description
1	<p data-bbox="204 338 1453 412">Cast-iron parts have an epoxy-based coating made in a cathodic electro-deposition (CED) process. CED is a high-quality dip-painting process where an electrical field around the products ensures deposition of paint particles as a thin, well-controlled layer on the surface.</p> <p data-bbox="204 483 400 510">Technical data</p> <p data-bbox="204 551 300 573">Controls:</p> <p data-bbox="204 577 635 600">Frequency converter: NONE</p> <p data-bbox="204 640 272 663">Liquid:</p> <p data-bbox="204 667 635 689">Pumped liquid: Water</p> <p data-bbox="204 694 703 716">Liquid temperature range: -25 .. 120 °C</p> <p data-bbox="204 721 635 743">Selected liquid temperature: 20 °C</p> <p data-bbox="204 748 699 770">Density: 998.2 kg/m³</p> <p data-bbox="204 810 316 833">Technical:</p> <p data-bbox="204 837 815 860">Pump speed on which pump data are based: 2800 rpm</p> <p data-bbox="204 864 667 887">Rated flow: 4.91 m³/h</p> <p data-bbox="204 891 639 913">Rated head: 3.29 m</p> <p data-bbox="204 918 639 940">Actual impeller diameter: 68 mm</p> <p data-bbox="204 945 639 967">Code for shaft seal: BQQE</p> <p data-bbox="204 972 767 994">Curve tolerance: ISO9906:2012 3B2</p> <p data-bbox="204 1034 316 1057">Materials:</p> <p data-bbox="204 1061 719 1160">Pump housing: Stainless steel EN 1.4308 ASTM CF8</p> <p data-bbox="204 1164 719 1218">Impeller: Composite PES+30% GF</p> <p data-bbox="204 1258 331 1281">Installation:</p> <p data-bbox="204 1285 687 1308">Range of ambient temperature: -30 .. 40 °C</p> <p data-bbox="204 1312 639 1335">Maximum operating pressure: 10 bar</p> <p data-bbox="204 1339 730 1361">Max pressure at stated temp: 10 bar / 120 °C</p> <p data-bbox="204 1366 576 1388">Type of connection: G</p> <p data-bbox="204 1393 639 1415">Size of connection: DN 32</p> <p data-bbox="204 1420 639 1442">Pressure rating for connection: PN 10</p> <p data-bbox="204 1447 655 1469">Port-to-port length: 180 mm</p> <p data-bbox="204 1473 624 1496">Flange size for motor: FT75</p> <p data-bbox="204 1536 363 1559">Electrical data:</p> <p data-bbox="204 1563 608 1585">Motor type: 71A</p> <p data-bbox="204 1590 655 1612">Rated power - P2: 0.12 kW</p> <p data-bbox="204 1617 635 1639">Mains frequency: 50 Hz</p> <p data-bbox="204 1644 719 1666">Rated voltage: 1 x 220-240 V</p> <p data-bbox="204 1671 699 1693">Rated current: 1.36-1.57 A</p> <p data-bbox="204 1697 687 1720">Starting current: 400-370 %</p> <p data-bbox="204 1724 608 1747">Cos phi - power factor: 0.77</p> <p data-bbox="204 1751 730 1774">Rated speed: 2815-2835 rpm</p> <p data-bbox="204 1778 699 1800">Motor efficiency at full load: 52.3-53.2 %</p> <p data-bbox="204 1805 576 1827">Number of poles: 2</p> <p data-bbox="204 1832 735 1854">Enclosure class (IEC 34-5): 55 Dust/Jetting</p> <p data-bbox="204 1859 576 1881">Insulation class (IEC 85): F</p> <p data-bbox="204 1886 671 1908">Motor No: 98714251</p> <p data-bbox="204 1948 284 1971">Others:</p> <p data-bbox="204 1975 635 1998">Net weight: 9.8 kg</p> <p data-bbox="204 2002 639 2024">Gross weight: 11.8 kg</p>



Company name:

Created by:

Phone:

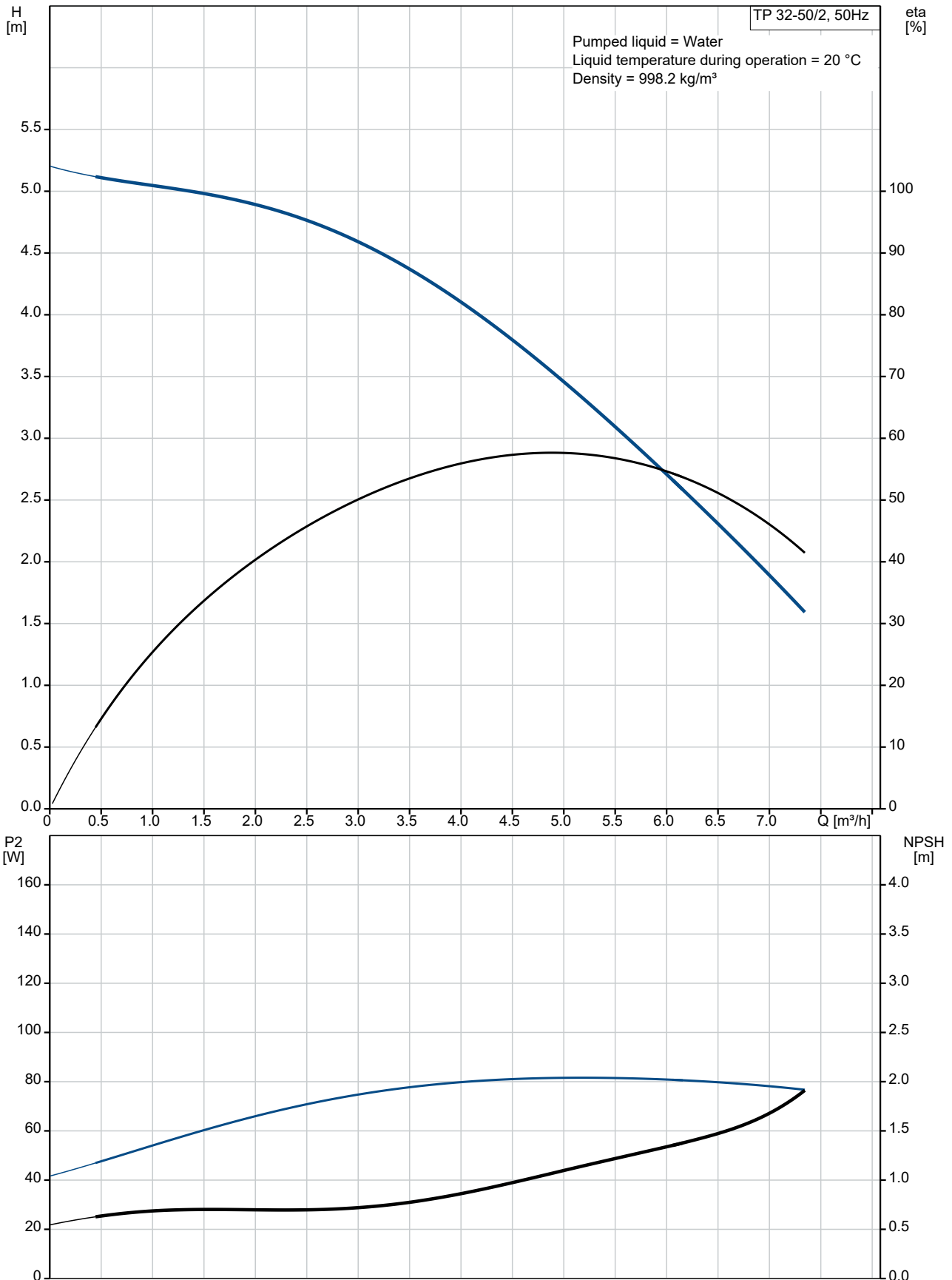
Date:

08/08/2022

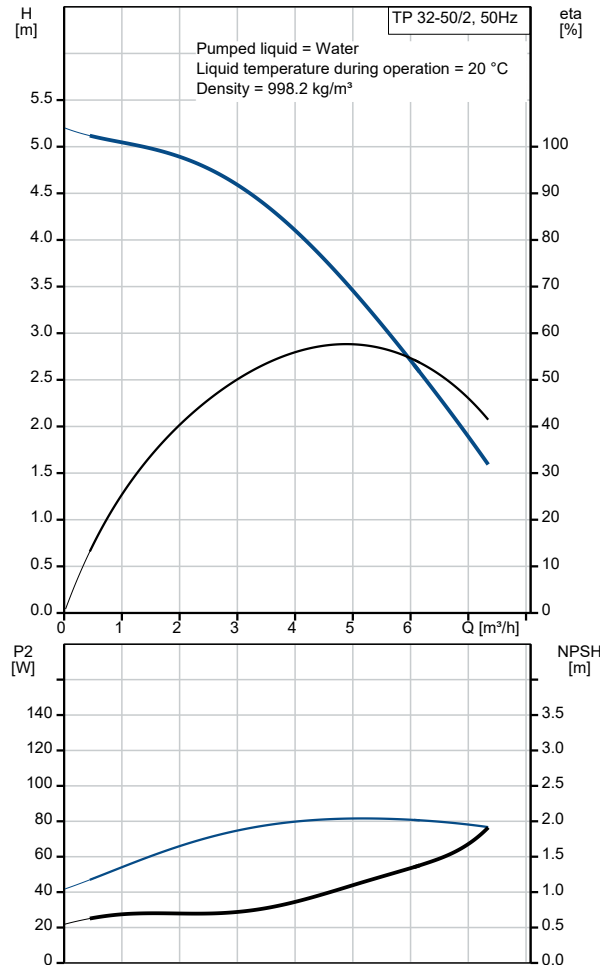
Qty.	Description
------	-------------

1	Shipping volume: 0.041 m ³ Danish VVS No.: 381873050 Country of origin: HU Custom tariff no.: 84137051
---	--

98282162 TP 32-50/2 A-O-I-BQQE-AX1 50 Hz



Description	Value
General information:	
Product name:	TP 32-50/2 A-O-I-BQQE-AX1
Product No:	98282162
EAN number:	5711492397848
Technical:	
Pump speed on which pump data are based:	2800 rpm
Rated flow:	4.91 m ³ /h
Rated head:	3.29 m
Maximum head:	50 dm
Actual impeller diameter:	68 mm
Code for shaft seal:	BQQE
Curve tolerance:	ISO9906:2012 3B2
Pump version:	A
Materials:	
Pump housing:	Stainless steel
Pump housing:	EN 1.4308
Pump housing:	ASTM CF8
Impeller:	Composite
Impeller:	PES+30% GF
Material code:	I
Installation:	
Range of ambient temperature:	-30 .. 40 °C
Maximum operating pressure:	10 bar
Max pressure at stated temp:	10 bar / 120 °C
Type of connection:	G
Size of connection:	DN 32
Pressure rating for connection:	PN 10
Port-to-port length:	180 mm
Flange size for motor:	FT75
Connect code:	O
Liquid:	
Pumped liquid:	Water
Liquid temperature range:	-25 .. 120 °C
Selected liquid temperature:	20 °C
Density:	998.2 kg/m ³
Electrical data:	
Motor type:	71A
Rated power - P2:	0.12 kW
Mains frequency:	50 Hz
Rated voltage:	1 x 220-240 V
Rated current:	1.36-1.57 A
Starting current:	400-370 %
Cos phi - power factor:	0.77
Rated speed:	2815-2835 rpm
Motor efficiency at full load:	52.3-53.2 %
Number of poles:	2
Enclosure class (IEC 34-5):	55 Dust/Jetting
Insulation class (IEC 85):	F
Built-in motor protection:	PTO
Motor No:	98714251
Controls:	
Frequency converter:	NONE
Others:	
Net weight:	9.8 kg
Gross weight:	11.8 kg
Shipping volume:	0.041 m ³
Danish VVS No.:	381873050





Company name:

Created by:

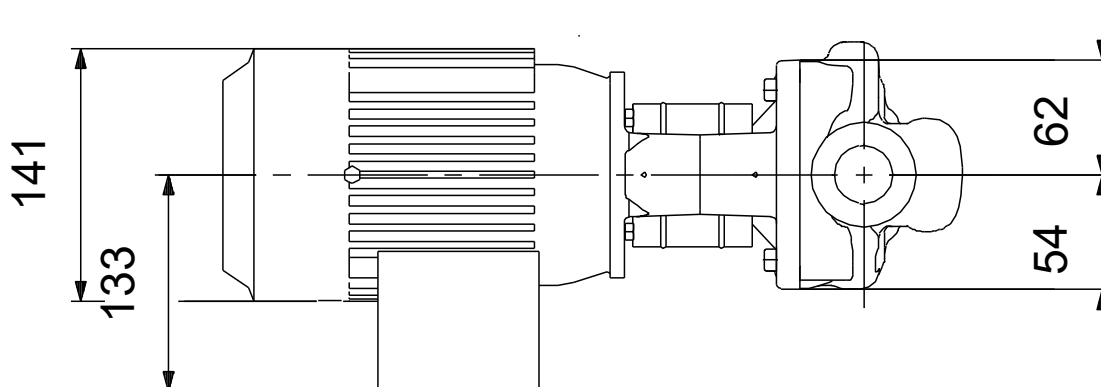
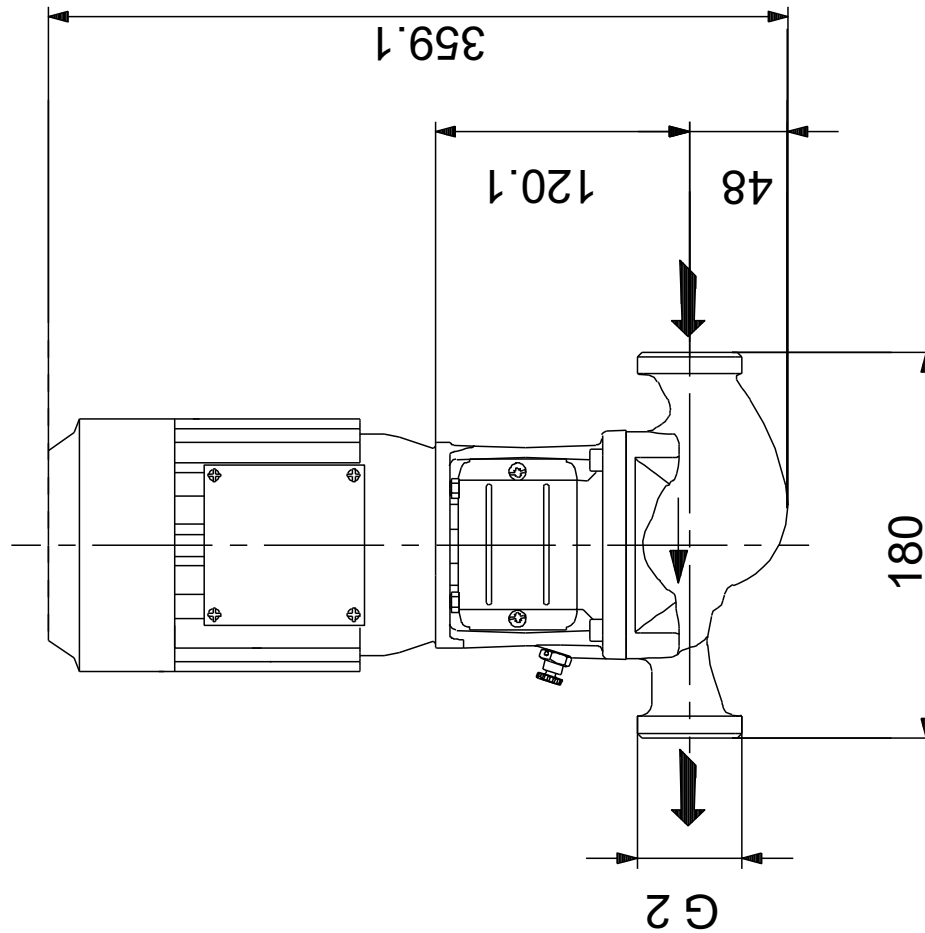
Phone:

Date:

08/08/2022

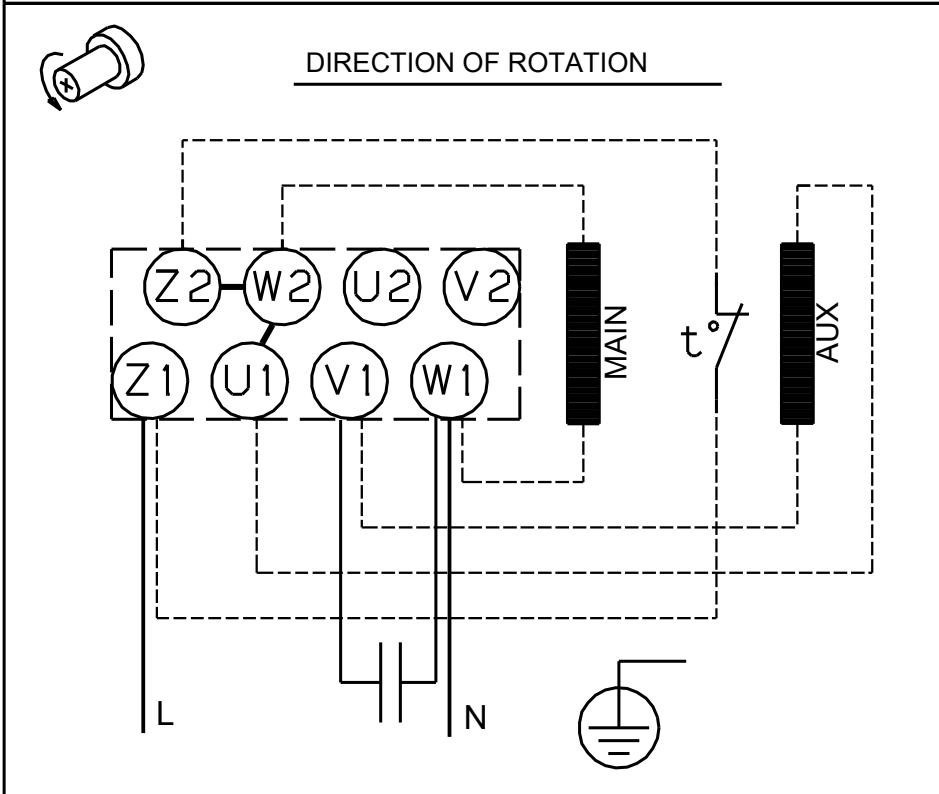
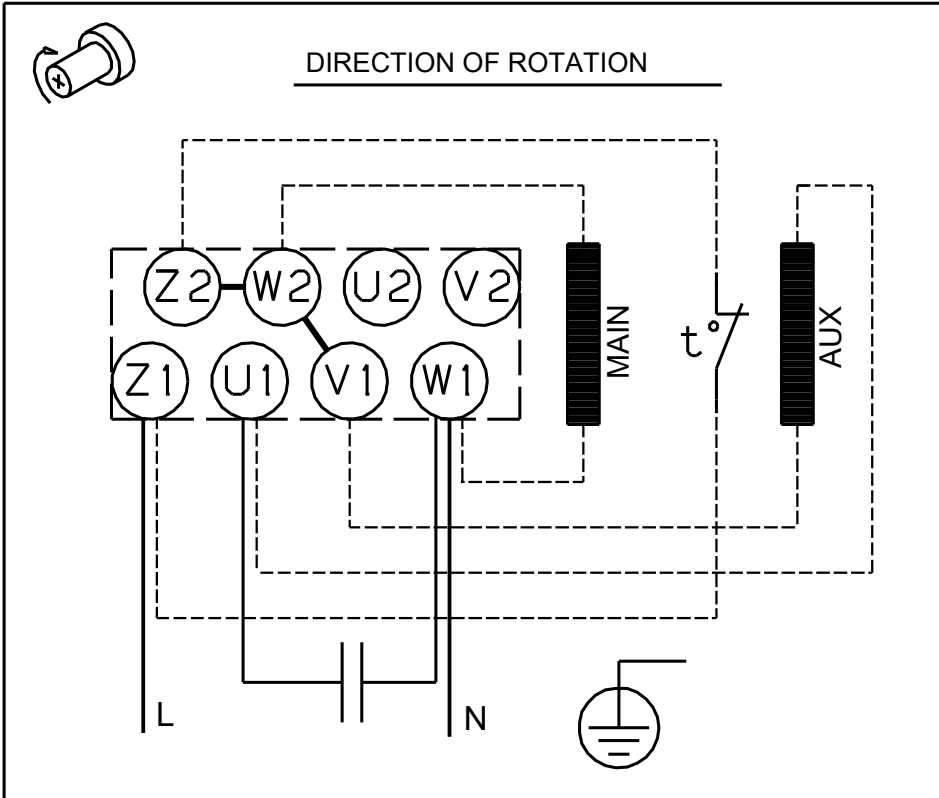
Description	Value
Country of origin:	HU
Custom tariff no.:	84137051

98282162 TP 32-50/2 A-O-I-BQQE-AX1 50 Hz



Note! All units are in [mm] unless others are stated.
Disclaimer: This simplified dimensional drawing does not show all details.

98282162 TP 32-50/2 A-O-I-BQQE-AX1 50 Hz



Note! All units are in [mm] unless others are stated.