

Qty.	Description
1	<p data-bbox="199 324 534 369">TP 32-50/2 A-O-A-BQQE-AX1</p> <div data-bbox="231 392 566 1064">  </div> <p data-bbox="590 1052 1061 1075">Note! Product picture may differ from actual product</p> <p data-bbox="199 1086 470 1108">Product No.: 98346590</p> <p data-bbox="199 1142 1460 1366"> Single-stage, close-coupled, volute pump with in-line suction and discharge ports of identical diameter. The pump is of the top-pull-out design, i.e. the power head (motor, pump head and impeller) can be removed for maintenance or service while the pump housing remains in the pipework. The pump is fitted with an unbalanced rubber bellows seal. The shaft seal is according to EN 12756. The pump is fitted with a fan-cooled asynchronous motor. Cast-iron parts have an epoxy-based coating made in a cathodic electro-deposition (CED) process. CED is a high-quality dip-painting process where an electrical field around the products ensures deposition of paint particles as a thin, well-controlled layer on the surface. </p> <p data-bbox="199 1400 279 1433">Pump</p> <p data-bbox="199 1444 1460 1601"> The pump housing is provided with a replaceable stainless steel/PTFE neck ring to reduce the amount of liquid running from the discharge side of the impeller to the suction side. The impeller is secured with a split cone pressed onto the shaft. The pump is fitted with an unbalanced rubber bellows seal with torque transmission across the spring and around the bellows. Due to the bellows, the seal does not wear the shaft, and the axial movement is not prevented by deposits on the shaft. </p> <p data-bbox="199 1612 343 1646">Primary seal:</p> <ul data-bbox="231 1646 790 1702" style="list-style-type: none"> • Rotating seal ring material: silicon carbide (SiC) • Stationary seat material: silicon carbide (SiC) <p data-bbox="199 1702 1460 1758">This material pairing is used where higher corrosion resistance is required. The high hardness of this material pairing offers good resistance against abrasive particles.</p> <p data-bbox="199 1758 853 1792">Secondary seal material: EPDM (ethylene-propylene rubber)</p> <p data-bbox="199 1792 1077 1825">EPDM has excellent resistance to hot water. EPDM is not suitable for mineral oils.</p> <p data-bbox="199 1825 1348 1859">A circulation of liquid through the duct of the air vent screw ensures lubrication and cooling of the shaft seal.</p> <p data-bbox="199 1859 1460 1937">The motor stool forms connection between the pump housing and the motor, and is equipped with a manual air vent screw for venting of the pump housing and the shaft seal chamber. The sealing between motor stool and pump housing is an O-ring or a flat gasket.</p> <p data-bbox="199 1937 1460 1993">The central part of the motor stool is provided with guards for protection against the shaft and coupling. Motor and pump shaft are connected via a shell coupling.</p> <p data-bbox="199 2027 279 2060">Motor</p>

Qty.	Description
	<p>The motor is a totally enclosed, fan-cooled motor with principal dimensions to IEC and DIN standards. Electrical tolerances comply with IEC 60034.</p> <p>The motor is flange-mounted with tapped-hole flange (FT).</p> <p>Motor-mounting designation in accordance with IEC 60034-7: IM B 14, IM V 18 (Code I) / IM 3601, IM 3611 (Code II).</p> <p>The motor has built-in thermal protection (PTO current and temperature sensors) in accordance with IEC 60034-11 and requires no further motor protection. The protection reacts to both slow- and quick-rising temperatures, e.g. constant overload and stalled conditions.</p> <p>As the thermal protection incorporates automatic reset, the motor must be connected in a way which ensures that the automatic reset cannot cause accidents.</p> <p>Further product details</p> <p>Technical data</p> <p>Controls:</p> <p>Frequency converter: NONE</p> <p>Liquid:</p> <p>Pumped liquid: Water</p> <p>Liquid temperature range: -25 .. 120 °C</p> <p>Selected liquid temperature: 20 °C</p> <p>Density: 998.2 kg/m³</p> <p>Technical:</p> <p>Pump speed on which pump data are based: 2800 rpm</p> <p>Rated flow: 4.91 m³/h</p> <p>Rated head: 3.29 m</p> <p>Actual impeller diameter: 68 mm</p> <p>Code for shaft seal: BQQE</p> <p>Curve tolerance: ISO9906:2012 3B2</p> <p>Materials:</p> <p>Pump housing: Cast iron EN-GJL-150 ASTM class 25</p> <p>Impeller: Composite PES+30% GF</p> <p>Installation:</p> <p>Range of ambient temperature: -30 .. 40 °C</p> <p>Maximum operating pressure: 10 bar</p> <p>Max pressure at stated temp: 10 bar / 120 °C</p> <p>Type of connection: G</p> <p>Size of connection: DN 32</p> <p>Pressure rating for connection: PN 10</p> <p>Port-to-port length: 180 mm</p> <p>Flange size for motor: FT75</p> <p>Electrical data:</p> <p>Motor type: 71A</p> <p>Rated power - P₂: 0.12 kW</p> <p>Mains frequency: 50 Hz</p> <p>Rated voltage: 1 x 220-240 V</p> <p>Rated current: 1.36-1.57 A</p> <p>Starting current: 400-370 %</p> <p>Cos phi - power factor: 0.77</p> <p>Rated speed: 2815-2835 rpm</p> <p>Motor efficiency at full load: 52.3-53.2 %</p>



Company name:

Created by:

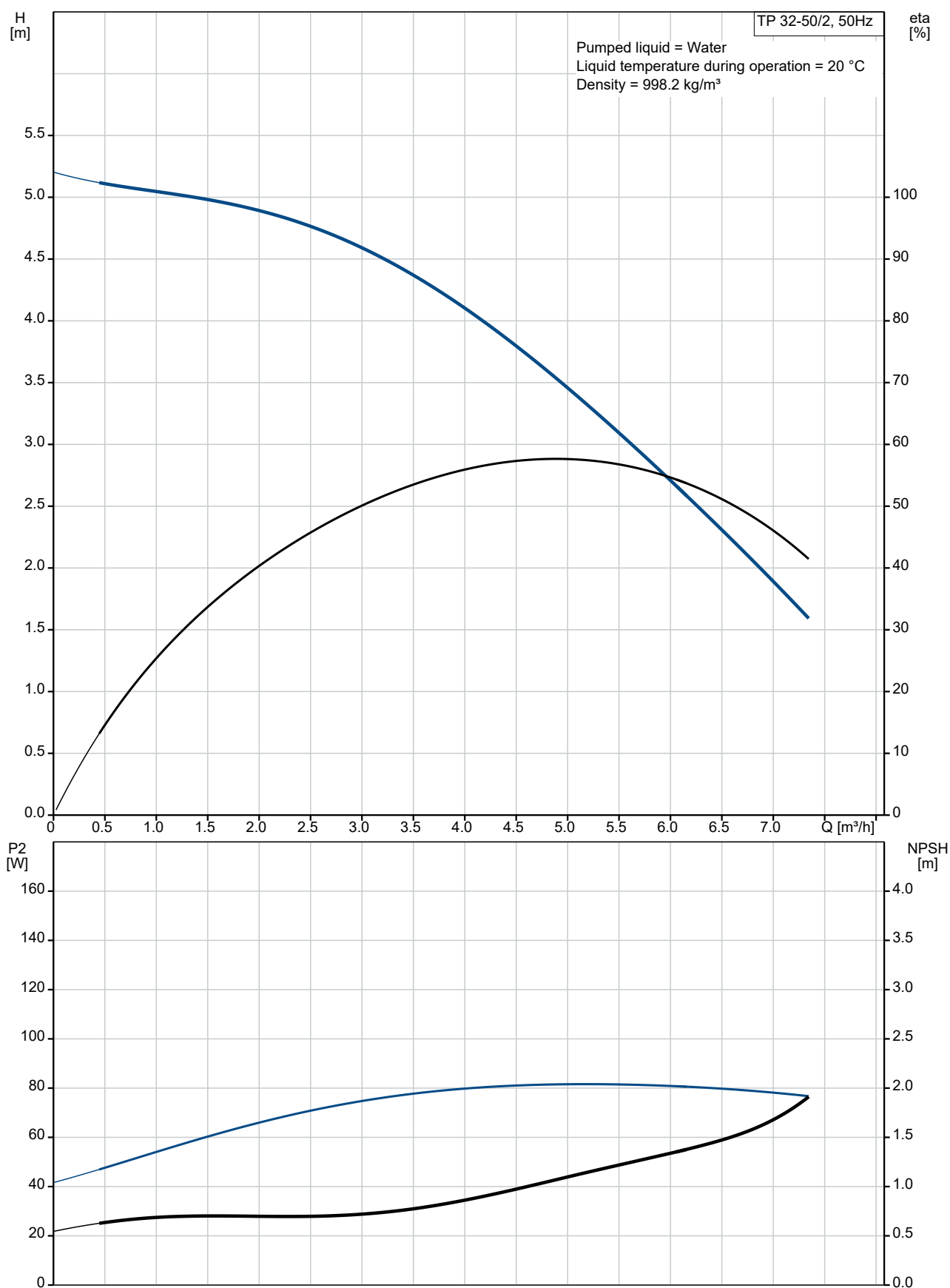
Phone:

Date:

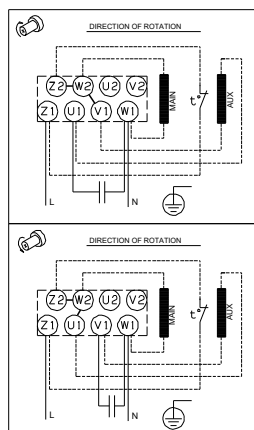
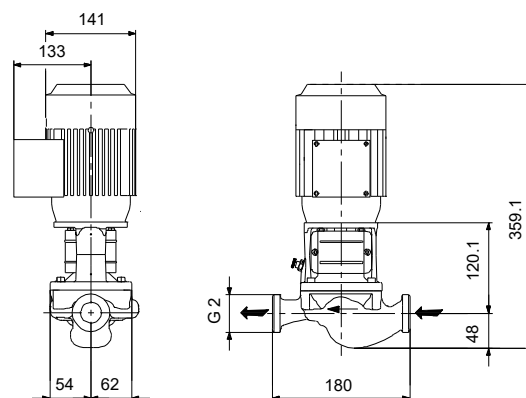
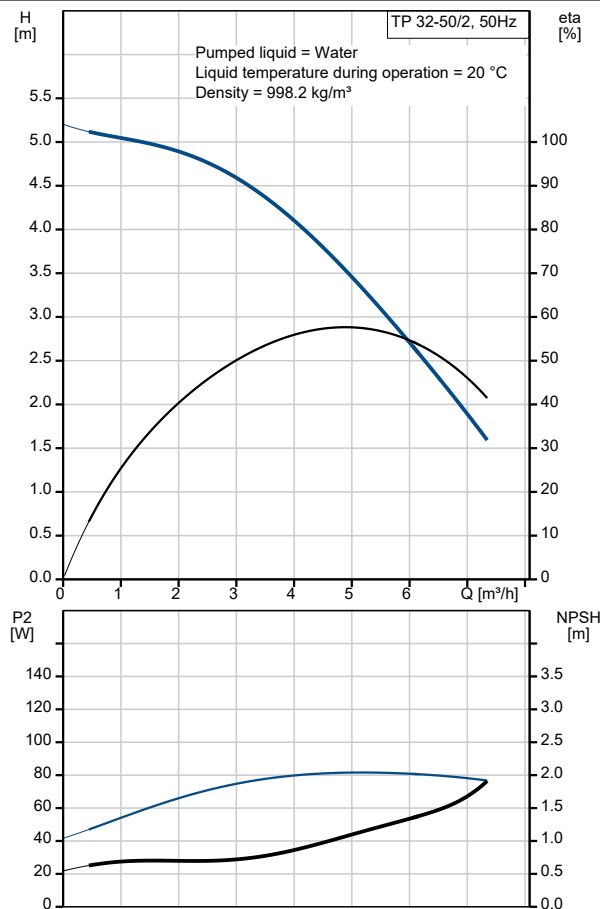
10/09/2021

Qty.	Description
	Number of poles: 2
	Enclosure class (IEC 34-5): 55 Dust/Jetting
	Insulation class (IEC 85): F
	Motor No: 98714251
	Others:
	Net weight: 9.6 kg
	Gross weight: 11.6 kg
	Shipping volume: 0.04 m ³
	Danish VVS No.: 381801050

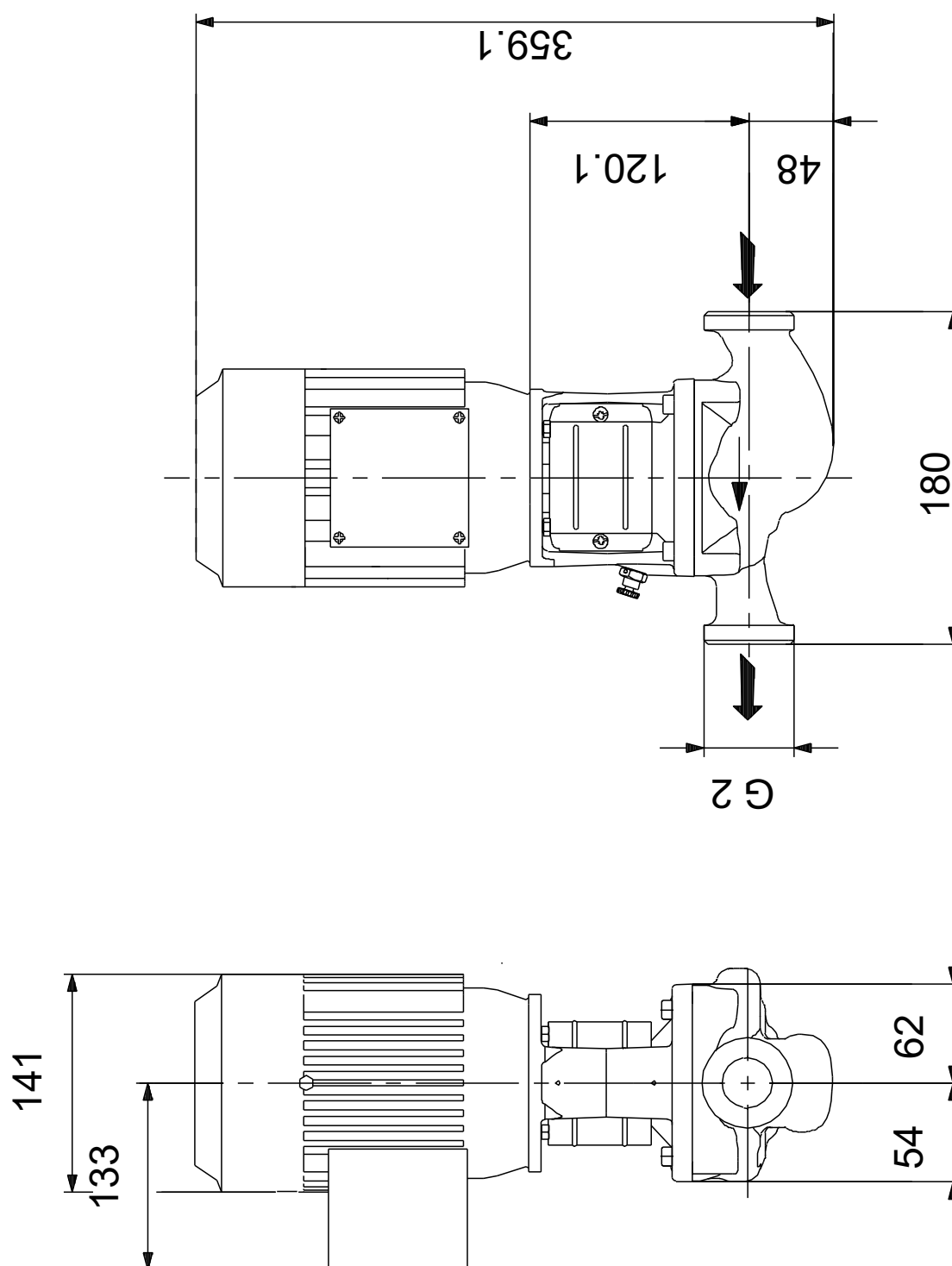
98346590 TP 32-50/2 A-O-A-BQQE-AX1 50 Hz



Description	Value
General information:	
Product name:	TP 32-50/2 A-O-A-BQQE-AX1
Product No:	98346590
EAN number:	5711493379911
Technical:	
Pump speed on which pump data are based:	2800 rpm
Rated flow:	4.91 m³/h
Rated head:	3.29 m
Maximum head:	50 dm
Actual impeller diameter:	68 mm
Code for shaft seal:	BQQE
Curve tolerance:	ISO9906:2012 3B2
Pump version:	A
Materials:	
Pump housing:	Cast iron
Pump housing:	EN-GJL-150
Pump housing:	ASTM class 25
Impeller:	Composite
Impeller:	PES+30% GF
Material code:	A
Installation:	
Range of ambient temperature:	-30 .. 40 °C
Maximum operating pressure:	10 bar
Max pressure at stated temp:	10 bar / 120 °C
Type of connection:	G
Size of connection:	DN 32
Pressure rating for connection:	PN 10
Port-to-port length:	180 mm
Flange size for motor:	FT75
Connect code:	O
Liquid:	
Pumped liquid:	Water
Liquid temperature range:	-25 .. 120 °C
Selected liquid temperature:	20 °C
Density:	998.2 kg/m³
Electrical data:	
Motor type:	71A
Rated power - P2:	0.12 kW
Mains frequency:	50 Hz
Rated voltage:	1 x 220-240 V
Rated current:	1.36-1.57 A
Starting current:	400-370 %
Cos phi - power factor:	0.77
Rated speed:	2815-2835 rpm
Motor efficiency at full load:	52.3-53.2 %
Number of poles:	2
Enclosure class (IEC 34-5):	55 Dust/Jetting
Insulation class (IEC 85):	F
Built-in motor protection:	PTO
Motor No:	98714251
Controls:	
Frequency converter:	NONE
Others:	
Net weight:	9.6 kg
Gross weight:	11.6 kg
Shipping volume:	0.04 m³
Danish VVS No.:	381801050



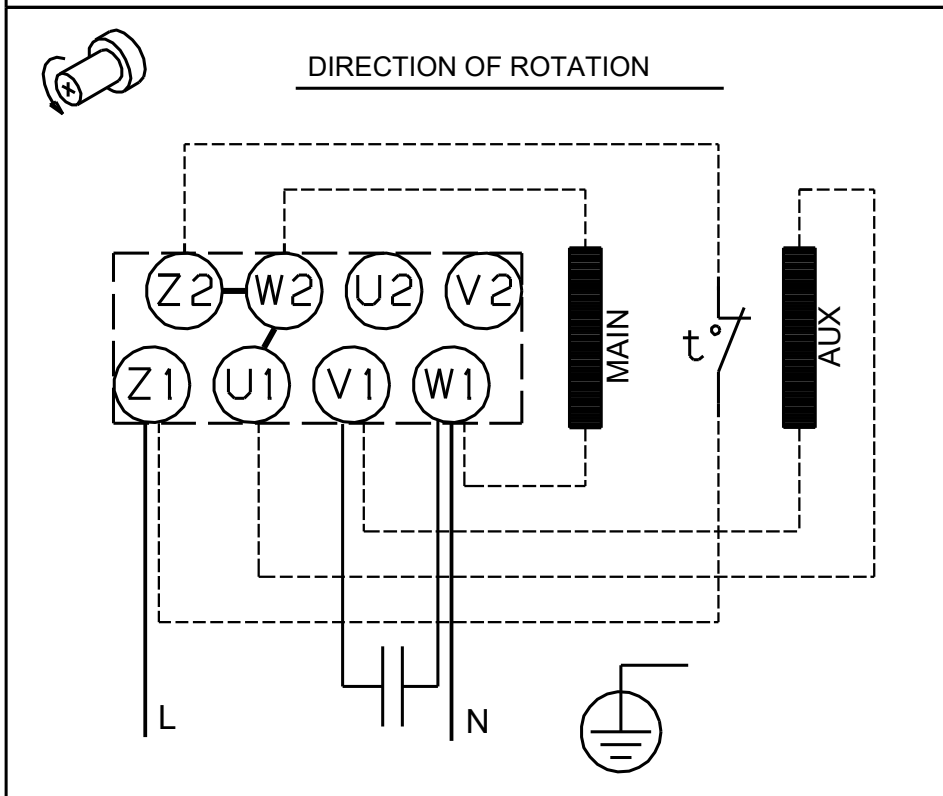
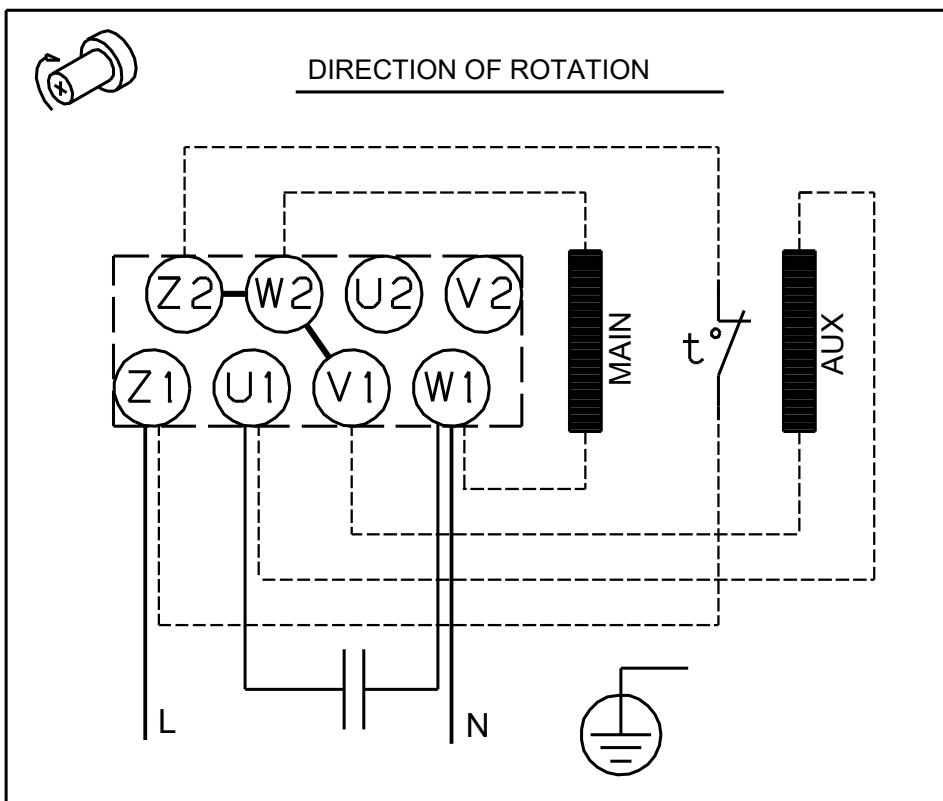
98346590 TP 32-50/2 A-O-A-BQQE-AX1 50 Hz



Note! All units are in [mm] unless others are stated.

Disclaimer: This simplified dimensional drawing does not show all details.

98346590 TP 32-50/2 A-O-A-BQQE-AX1 50 Hz



Note! All units are in [mm] unless others are stated.