
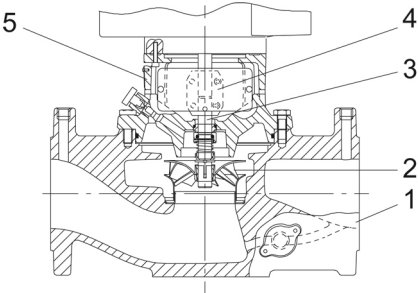


Qty.	Description
1	<p data-bbox="204 338 472 360">TP 40-90/2 A-F-A-BUBE</p> <div data-bbox="213 378 574 750">  </div> <p data-bbox="595 739 1062 761">Note! Product picture may differ from actual product</p> <p data-bbox="204 770 464 792">Product No.: 98346610</p> <p data-bbox="204 828 1295 851">Single-stage, close-coupled, volute pump with in-line suction and discharge ports of identical diameter.</p> <p data-bbox="204 857 1398 907">The pump is of the top-pull-out design, i.e. the power head (motor, pump head and impeller) can be removed for maintenance or service while the pump housing remains in the pipework.</p> <p data-bbox="204 916 831 938">The pump is fitted with an unbalanced rubber bellows seal.</p> <p data-bbox="204 945 1378 994">The shaft seal is according to EN 12756. Pipework connection is via PN 6/10 DIN flanges (EN 1092-2 and ISO 7005-2).</p> <p data-bbox="204 1003 815 1025">The pump is fitted with a fan-cooled asynchronous motor.</p> <p data-bbox="204 1032 1445 1106">The product's minimum efficiency index (MEI) is greater or equal to 0.70. This is by the Commission Regulation (EU) considered as an indicative benchmark for best-performing water pump available on the market as from 1 January 2013.</p> <p data-bbox="204 1115 1452 1189">Cast-iron parts have an epoxy-based coating made in a cathodic electro-deposition (CED) process. CED is a high-quality dip-painting process where an electrical field around the products ensures deposition of paint particles as a thin, well-controlled layer on the surface.</p> <p data-bbox="204 1234 280 1256">Pump</p> <div data-bbox="213 1279 632 1570">  </div> <p data-bbox="204 1601 384 1624">1: Pump housing</p> <p data-bbox="204 1630 317 1653">2: Impeller</p> <p data-bbox="204 1659 288 1682">3: Shaft</p> <p data-bbox="204 1688 325 1711">4: Coupling</p> <p data-bbox="204 1718 352 1740">5: Pump head</p> <p data-bbox="204 1749 1382 1798">The pump housing is provided with a replaceable stainless steel/PTFE neck ring to reduce the amount of liquid running from the discharge side of the impeller to the suction side.</p> <p data-bbox="204 1807 882 1830">The impeller is secured with a split cone pressed onto the shaft.</p> <p data-bbox="204 1836 1450 1910">The pump is fitted with an unbalanced rubber bellows seal with torque transmission across the spring and around the bellows. Due to the bellows, the seal does not wear the shaft, and the axial movement is not prevented by deposits on the shaft.</p> <p data-bbox="204 1919 344 1942">Primary seal:</p> <ul data-bbox="240 1951 922 2007" style="list-style-type: none"> • Rotating seal ring material: tungsten carbide (WC) • Stationary seat material: carbon graphite, resin-impregnated <p data-bbox="204 2013 603 2036">This is a widely used material pairing.</p> <p data-bbox="204 2042 1062 2065">If the pumped liquid contains particles, wear on the seal faces must be expected.</p>

Qty.	Description
	<p>Due to the favourable lubricating properties of carbon graphite, the seal is suitable for use even under poor lubricating conditions, such as hot water.</p> <p>However, under such conditions, wear on the carbon graphite face reduces seal life.</p> <p>Secondary seal material: EPDM (ethylene-propylene rubber)</p> <p>EPDM has excellent resistance to hot water. EPDM is not suitable for mineral oils.</p> <p>A circulation of liquid through the duct of the air vent screw ensures lubrication and cooling of the shaft seal.</p> <p>The flanges have tapings for mounting of pressure gauges.</p> <p>The motor stool forms connection between the pump housing and the motor, and is equipped with a manual air vent screw for venting of the pump housing and the shaft seal chamber. The sealing between motor stool and pump housing is an O-ring or a flat gasket.</p> <p>The central part of the motor stool is provided with guards for protection against the shaft and coupling. Motor and pump shaft are connected via a shell coupling.</p> <p>Motor</p> <p>The motor is a totally enclosed, fan-cooled motor with principal dimensions to IEC and DIN standards. Electrical tolerances comply with IEC 60034.</p> <p>The motor is flange-mounted with tapped-hole flange (FT).</p> <p>Motor-mounting designation in accordance with IEC 60034-7: IM B 14, IM V 18 (Code I) / IM 3601, IM 3611 (Code II).</p> <p>The motor has built-in thermal protection (PTO current and temperature sensors) in accordance with IEC 60034-11 and requires no further motor protection. The protection reacts to both slow- and quick-rising temperatures, e.g. constant overload and stalled conditions.</p> <p>As the thermal protection incorporates automatic reset, the motor must be connected in a way which ensures that the automatic reset cannot cause accidents.</p> <p>Further product details</p> <p>Technical data</p> <p>Liquid:</p> <p>Pumped liquid: Water</p> <p>Liquid temperature range: 0 .. 110 °C</p> <p>Selected liquid temperature: 20 °C</p> <p>Density: 998.2 kg/m³</p> <p>Technical:</p> <p>Pump speed on which pump data are based: 2865 rpm</p> <p>Rated flow: 9.48 m³/h</p> <p>Rated head: 7.01 m</p> <p>Actual impeller diameter: 89 mm</p> <p>Code for shaft seal: BUBE</p> <p>Curve tolerance: ISO9906:2012 3B</p> <p>Materials:</p> <p>Pump housing: Cast iron EN-JL1030 A48-30 B</p> <p>Impeller: Composite PES/PP 30% GF</p> <p>Installation:</p> <p>Maximum ambient temperature: 40 °C</p> <p>Maximum operating pressure: 10 bar</p> <p>Type of connection: DIN</p> <p>Size of connection: DN 40</p> <p>Pressure rating for connection: PN 6/10</p> <p>Port-to-port length: 250 mm</p> <p>Electrical data:</p> <p>Motor type: 71B</p>



Company name:

Created by:

Phone:

Date:

10/09/2021

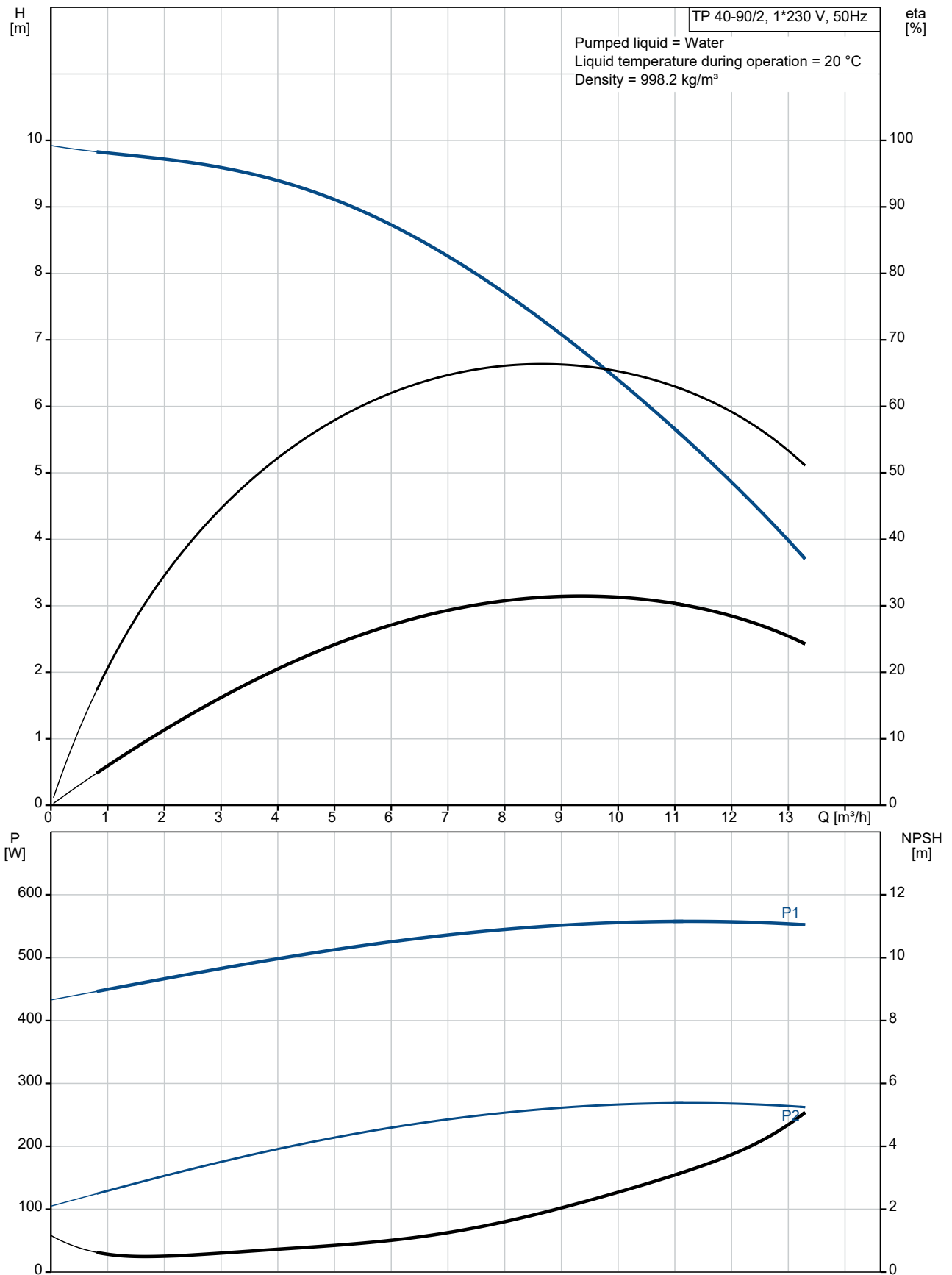
Qty.	Description
------	-------------

Rated power - P2:	0.37 kW
Mains frequency:	50 Hz
Rated voltage:	1 x 220-230/240 V
Rated current:	2.95/2.70 A
Starting current:	280 %
Cos phi - power factor:	0.99
Rated speed:	2770 rpm
Motor efficiency at full load:	60.0-56.0 %
Number of poles:	2
Enclosure class (IEC 34-5):	55 Dust/Jetting
Insulation class (IEC 85):	F
Motor No:	85215102

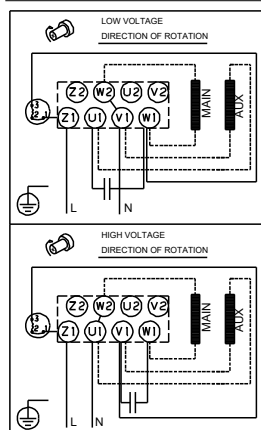
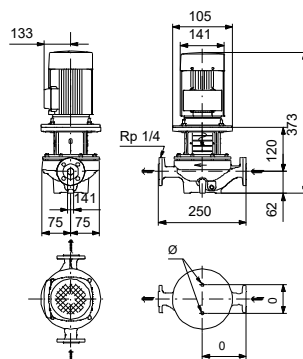
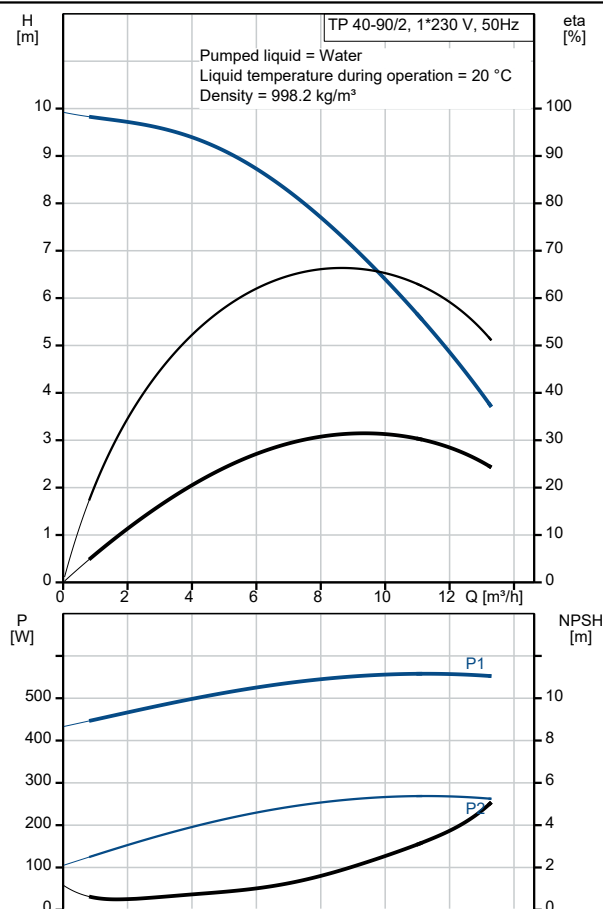
Others:

Minimum efficiency index, MEI \geq :	0.70
Net weight:	14.8 kg
Gross weight:	16.8 kg
Shipping volume:	0.04 m ³

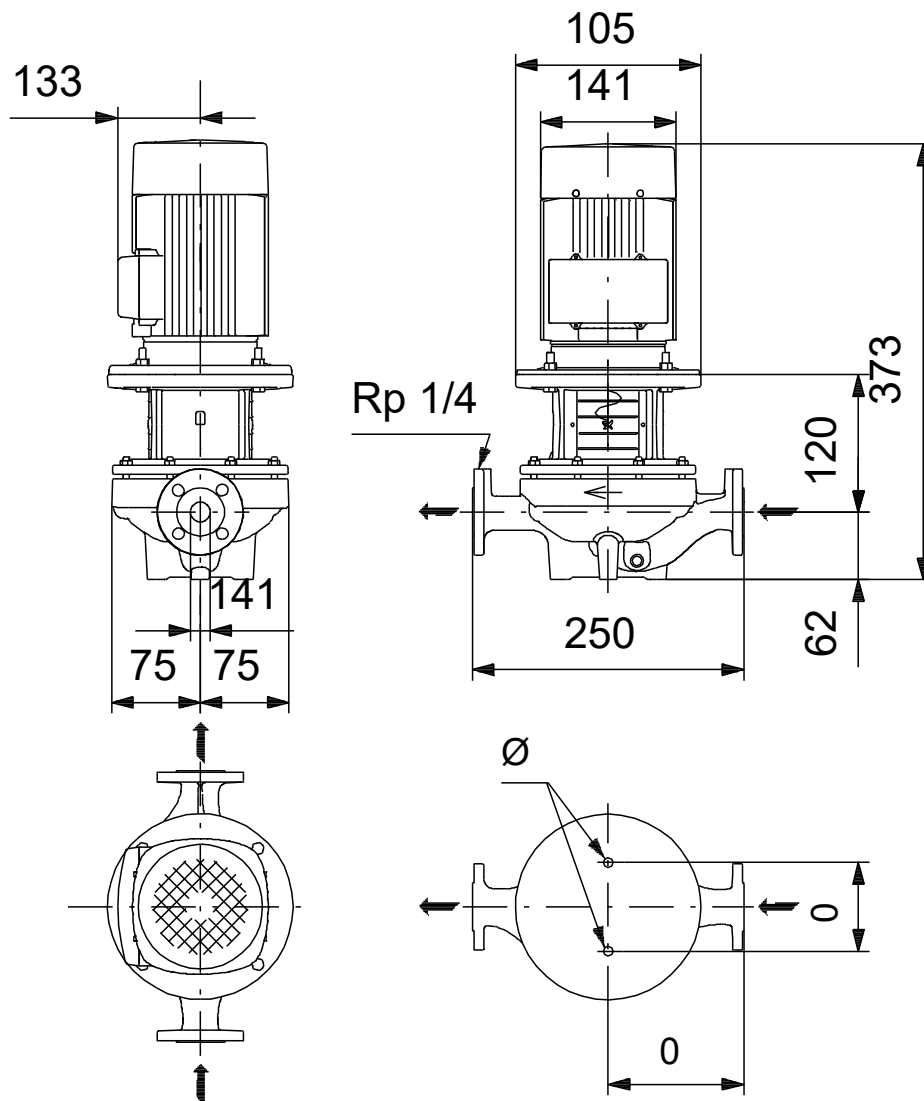
98346610 TP 40-90/2 A-F-A-BUBE 50 Hz



Description	Value
General information:	
Product name:	TP 40-90/2 A-F-A-BUBE
Product No:	98346610
EAN number:	5711493380115
Technical:	
Pump speed on which pump data are based:	2865 rpm
Rated flow:	9.48 m ³ /h
Rated head:	7.01 m
Maximum head:	90 dm
Actual impeller diameter:	89 mm
Code for shaft seal:	BUBE
Curve tolerance:	ISO9906:2012 3B
Pump version:	A
Materials:	
Pump housing:	Cast iron
Pump housing:	EN-JL1030
Pump housing:	A48-30 B
Impeller:	Composite PES/PP 30% GF
Material code:	A
Installation:	
Maximum ambient temperature:	40 °C
Maximum operating pressure:	10 bar
Type of connection:	DIN
Size of connection:	DN 40
Pressure rating for connection:	PN 6/10
Port-to-port length:	250 mm
Connect code:	F
Liquid:	
Pumped liquid:	Water
Liquid temperature range:	0 .. 110 °C
Selected liquid temperature:	20 °C
Density:	998.2 kg/m ³
Electrical data:	
Motor type:	71B
Rated power - P2:	0.37 kW
Mains frequency:	50 Hz
Rated voltage:	1 x 220-230/240 V
Rated current:	2.95/2.70 A
Starting current:	280 %
Cos phi - power factor:	0.99
Rated speed:	2770 rpm
Motor efficiency at full load:	60.0-56.0 %
Number of poles:	2
Enclosure class (IEC 34-5):	55 Dust/Jetting
Insulation class (IEC 85):	F
Built-in motor protection:	PTO
Motor No:	85215102
Others:	
Minimum efficiency index, MEI ≥:	0.70
Net weight:	14.8 kg
Gross weight:	16.8 kg
Shipping volume:	0.04 m ³



98346610 TP 40-90/2 A-F-A-BUBE 50 Hz



Note! All units are in [mm] unless others are stated.
Disclaimer: This simplified dimensional drawing does not show all details.

