
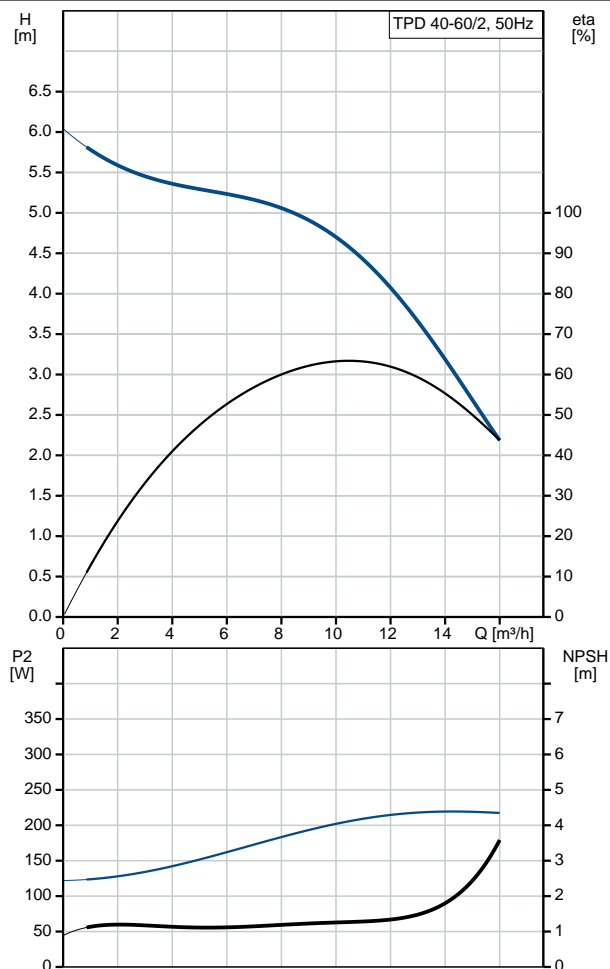


Qty.	Description																																																
1	<p><b>TPD 40-60/2 A-F-A-BQQE-CX1</b></p>  <p>Product No.: <a href="#">98470784</a></p> <p>Single-stage, close-coupled, volute twin-head pump with in-line suction and discharge ports of identical diameter. The twin-head pump is designed with two parallel power-heads. The pump is of the top-pull-out design, i.e. the power head (motor, pump head and impeller) can be removed for maintenance or service while the pump housing remains in the pipework.</p> <p>Each power head is fitted with an unbalanced rubber bellows seal. The shaft seal is according to EN 12756. Pipework connection is via PN 6/10 DIN flanges (EN 1092-2 and ISO 7005-2).</p> <p>Pipework connection is via PN 6/10 DIN flanges (EN 1092-2 and ISO 7005-2).</p> <p>Each power head is fitted with a fan-cooled asynchronous motor of identical size.</p> <p><b>Liquid:</b></p> <table> <tr> <td>Pumped liquid:</td><td>Water</td></tr> <tr> <td>Liquid temperature range:</td><td>-25 .. 120 °C</td></tr> <tr> <td>Selected liquid temperature:</td><td>20 °C</td></tr> <tr> <td>Density:</td><td>998.2 kg/m<sup>3</sup></td></tr> </table> <p><b>Technical:</b></p> <table> <tr> <td>Pump speed on which pump data are based:</td><td>2890 rpm</td></tr> <tr> <td>Rated flow:</td><td>9.69 m<sup>3</sup>/h</td></tr> <tr> <td>Rated head:</td><td>4.59 m</td></tr> <tr> <td>Actual impeller diameter:</td><td>70 mm</td></tr> <tr> <td>Primary shaft seal:</td><td>BQQE</td></tr> <tr> <td>Curve tolerance:</td><td>ISO9906:2012 3B2</td></tr> </table> <p><b>Materials:</b></p> <table> <tr> <td>Pump housing:</td><td>Cast iron EN-JL1040 ASTM A48-40 B</td></tr> <tr> <td>Impeller:</td><td>Stainless steel DIN W.-Nr. 1.4301 AISI 304</td></tr> </table> <p><b>Installation:</b></p> <table> <tr> <td>Range of ambient temperature:</td><td>-30 .. 40 °C</td></tr> <tr> <td>Maximum operating pressure:</td><td>10 bar</td></tr> <tr> <td>Flange standard:</td><td>DIN</td></tr> <tr> <td>Pipe connection:</td><td>DN 40</td></tr> <tr> <td>Pump inlet:</td><td>DN 40</td></tr> <tr> <td>Pump outlet:</td><td>DN 40</td></tr> <tr> <td>Pressure rating:</td><td>PN 6/10</td></tr> <tr> <td>Port-to-port length:</td><td>250 mm</td></tr> <tr> <td>Flange size for motor:</td><td>FT85</td></tr> </table> <p><b>Electrical data:</b></p> <table> <tr> <td>Motor type:</td><td>71A</td></tr> <tr> <td>Rated power - P2:</td><td>2 x 0.25 kW</td></tr> <tr> <td>Mains frequency:</td><td>50 Hz</td></tr> </table>	Pumped liquid:	Water	Liquid temperature range:	-25 .. 120 °C	Selected liquid temperature:	20 °C	Density:	998.2 kg/m <sup>3</sup>	Pump speed on which pump data are based:	2890 rpm	Rated flow:	9.69 m <sup>3</sup> /h	Rated head:	4.59 m	Actual impeller diameter:	70 mm	Primary shaft seal:	BQQE	Curve tolerance:	ISO9906:2012 3B2	Pump housing:	Cast iron EN-JL1040 ASTM A48-40 B	Impeller:	Stainless steel DIN W.-Nr. 1.4301 AISI 304	Range of ambient temperature:	-30 .. 40 °C	Maximum operating pressure:	10 bar	Flange standard:	DIN	Pipe connection:	DN 40	Pump inlet:	DN 40	Pump outlet:	DN 40	Pressure rating:	PN 6/10	Port-to-port length:	250 mm	Flange size for motor:	FT85	Motor type:	71A	Rated power - P2:	2 x 0.25 kW	Mains frequency:	50 Hz
Pumped liquid:	Water																																																
Liquid temperature range:	-25 .. 120 °C																																																
Selected liquid temperature:	20 °C																																																
Density:	998.2 kg/m <sup>3</sup>																																																
Pump speed on which pump data are based:	2890 rpm																																																
Rated flow:	9.69 m <sup>3</sup> /h																																																
Rated head:	4.59 m																																																
Actual impeller diameter:	70 mm																																																
Primary shaft seal:	BQQE																																																
Curve tolerance:	ISO9906:2012 3B2																																																
Pump housing:	Cast iron EN-JL1040 ASTM A48-40 B																																																
Impeller:	Stainless steel DIN W.-Nr. 1.4301 AISI 304																																																
Range of ambient temperature:	-30 .. 40 °C																																																
Maximum operating pressure:	10 bar																																																
Flange standard:	DIN																																																
Pipe connection:	DN 40																																																
Pump inlet:	DN 40																																																
Pump outlet:	DN 40																																																
Pressure rating:	PN 6/10																																																
Port-to-port length:	250 mm																																																
Flange size for motor:	FT85																																																
Motor type:	71A																																																
Rated power - P2:	2 x 0.25 kW																																																
Mains frequency:	50 Hz																																																

Qty.	Description
	<p>Rated voltage: 1 x 220-230/240 V</p> <p>Rated current: 2.05/2.00 A</p> <p>Starting current: 280 %</p> <p>Cos phi - power factor: 0.99</p> <p>Rated speed: 2800 rpm</p> <p>Motor efficiency at full load: 58.0 %</p> <p>Number of poles: 2</p> <p>Enclosure class (IEC 34-5): 55 Dust/Jetting</p> <p>Insulation class (IEC 85): F</p> <p>Motor No: 85215101</p> <p><b>Others:</b></p> <p>Minimum efficiency index, MEI <math>\eta_{\%}</math>: 0.70</p> <p>ErP status: EuP Standalone/Prod.</p> <p>Net weight: 40.1 kg</p> <p>Gross weight: 65.8 kg</p> <p>Shipping volume: 0.08 m<sup>3</sup></p> <p>Country of origin: HU</p> <p>Custom tariff no.: 84137065</p>

Description	Value
<b>General information:</b>	
Product name:	TPD 40-60/2 A-F-A-BQQE-CX1
Product No:	98470784
EAN number:	5711495635688 5711495635688
<b>Technical:</b>	
Pump speed on which pump data are based:	2890 rpm
Rated flow:	9.69 m³/h
Rated head:	4.59 m
Head max:	60 dm
Actual impeller diameter:	70 mm
Primary shaft seal:	BQQE
Curve tolerance:	ISO9906:2012 3B2
Pump version:	A
Model:	A
<b>Materials:</b>	
Pump housing:	Cast iron EN-JL1040
	ASTM A48-40 B
Impeller:	Stainless steel DIN W.-Nr. 1.4301 AISI 304
Material code:	A
<b>Installation:</b>	
Range of ambient temperature:	-30 .. 40 °C
Maximum operating pressure:	10 bar
Flange standard:	DIN
Pipe connection:	DN 40
Pump inlet:	DN 40
Pump outlet:	DN 40
Pressure rating:	PN 6/10
Port-to-port length:	250 mm
Flange size for motor:	FT85
Connect code:	F
<b>Liquid:</b>	
Pumped liquid:	Water
Liquid temperature range:	-25 .. 120 °C
Selected liquid temperature:	20 °C
Density:	998.2 kg/m³
<b>Electrical data:</b>	
Motor type:	71A
Rated power - P2:	2 x 0.25 kW
Mains frequency:	50 Hz
Rated voltage:	1 x 220-230/240 V
Rated current:	2.05/2.00 A
Starting current:	280 %
Cos phi - power factor:	0.99
Rated speed:	2800 rpm
Motor efficiency at full load:	58.0 %
Number of poles:	2
Enclosure class (IEC 34-5):	55 Dust/Jetting
Insulation class (IEC 85):	F
Motor protec:	PTO
Motor No:	85215101
<b>Others:</b>	
Minimum efficiency index, MEI $\hat{a}\%$ ¥:	0.70
ErP status:	EuP Standalone/Prod.





**Company name:**

**Created by:**

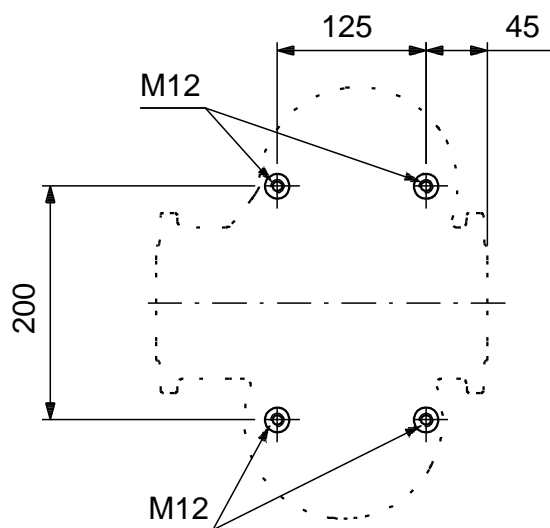
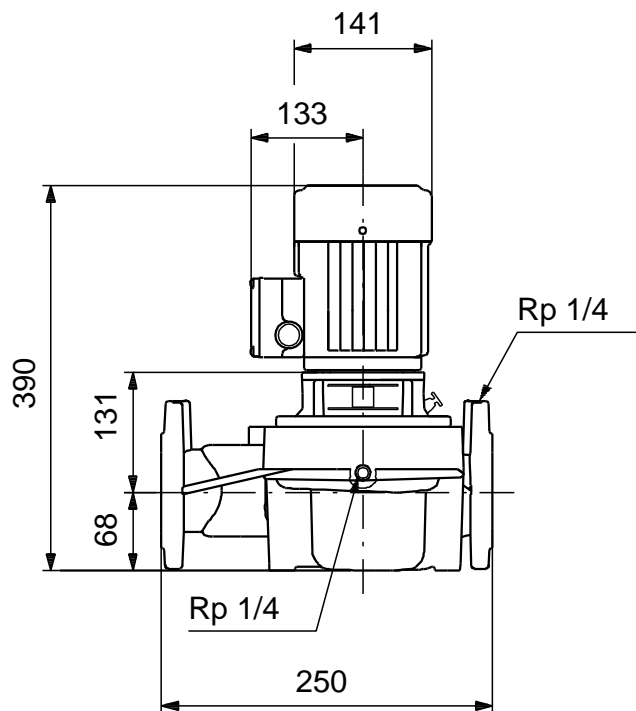
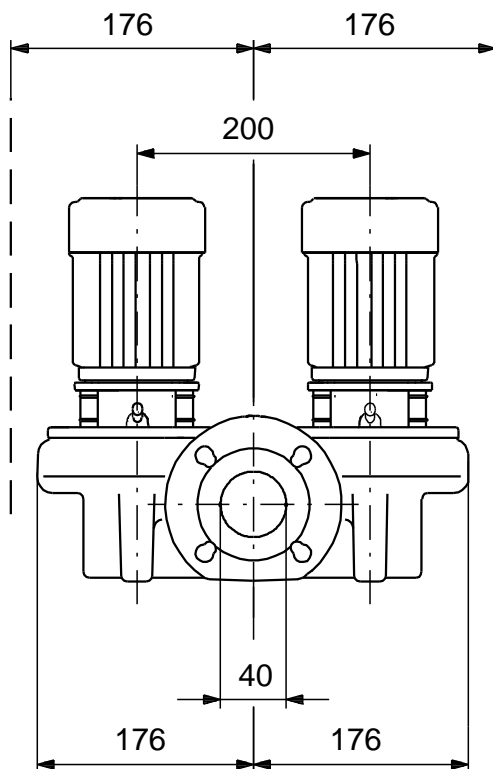
**Phone:**

**Date:**

11/02/2020

Description	Value
Net weight:	40.1 kg
Gross weight:	65.8 kg
Shipping volume:	0.08 m <sup>3</sup>
Country of origin:	HU
Custom tariff no.:	84137065

## 98470784 TPD 40-60/2 A-F-A-BQQE-CX1 50 Hz



Note! All units are in [mm] unless others are stated.  
Disclaimer: This simplified dimensional drawing does not show all details.