
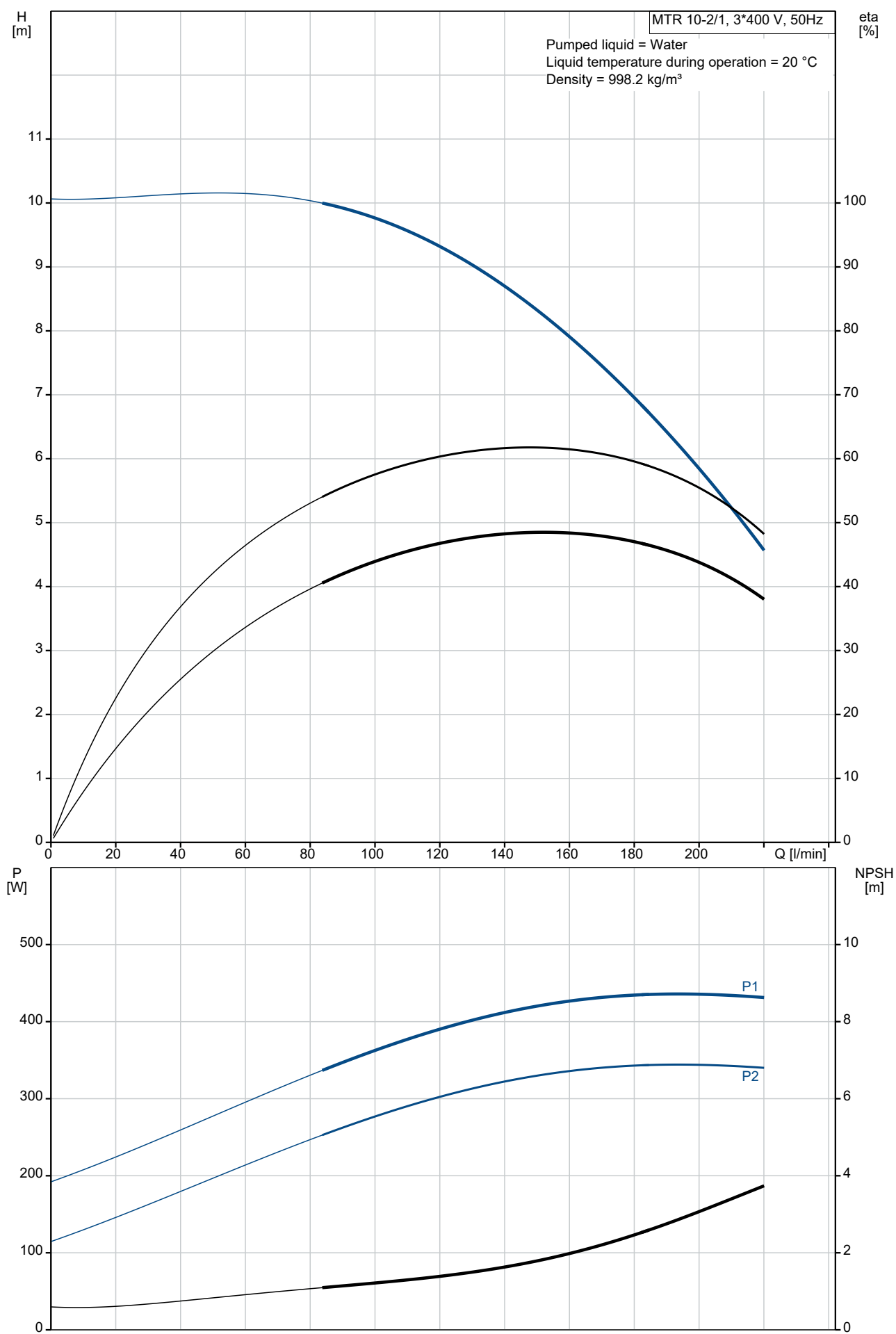


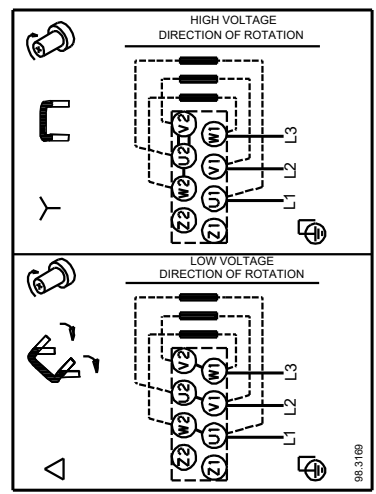
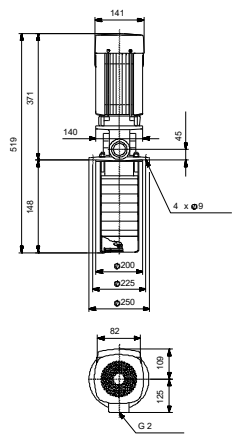
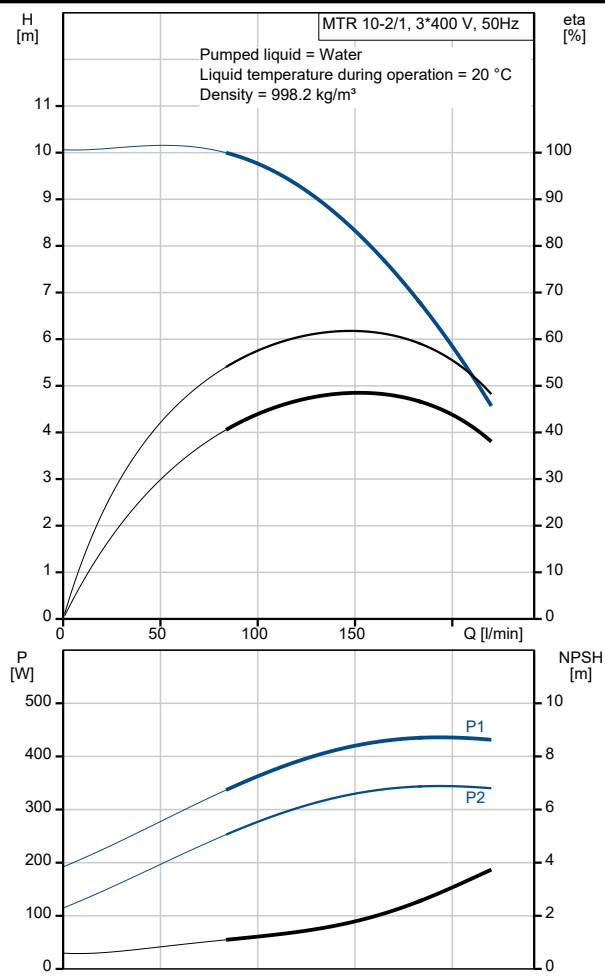
Qty.	Description
1	<p><b>MTR 10-2/1 A-W-A-HUUV</b></p>  <p>Product No.: On request</p> <p>Multistage, immersible, self-priming, centrifugal pump for vertical installation in tanks etc. The pump head and base are in cast iron – all other wetted parts are in stainless steel. The pump has the following characteristics:</p> <ul style="list-style-type: none"> <li>• Dimensions according to DIN 5440.</li> <li>• Impellers, intermediate chambers and spline shaft are made of Stainless steel.</li> <li>• Mechanical shaft seal according to EN 12756.</li> <li>• Power transmission via sintered metal split coupling.</li> </ul> <p>A cartridge shaft seal ensures high reliability, safe handling, and easy access and service. The pump is fitted with a 3-phase, fan-cooled asynchronous motor.</p> <p>Controls:</p> <p>Frequency converter: NONE</p> <p>Liquid:</p> <p>Pumped liquid: Water</p> <p>Liquid temperature range: -10 .. 90 °C</p> <p>Selected liquid temperature: 20 °C</p> <p>Density: 998.2 kg/m<sup>3</sup></p> <p>Technical:</p> <p>Pump speed on which pump data are based: 2864 rpm</p> <p>Rated flow: 167 l/min</p> <p>Rated head: 7.1 m</p> <p>Chambers: 2</p> <p>Drainage back to tank: N</p> <p>Pump orientation: Vertical</p> <p>Code for shaft seal: HUUV</p> <p>Approvals: CE,EAC</p> <p>Curve tolerance: ISO9906:2012 3B</p> <p>Materials:</p> <p>Pump head: Cast iron EN 1561 EN-GJL-200 ASTM A48-25B</p> <p>Impeller: Stainless steel EN 1.4301 AISI 304</p> <p>Installation:</p> <p>t max amb: 60 °C</p> <p>Maximum operating pressure: 25 bar</p> <p>Max pressure at stated temp: 25 bar / 90 °C</p> <p>Type of connection: G internal thread</p> <p>Size of outlet connection: 2 inch</p> <p>Immersion depth: 148 mm</p> <p>Flange size for motor: FT100</p> <p>Electrical data:</p> <p>Motor standard: IEC</p> <p>Motor type: 80A</p> <p>IE Efficiency class: IE3</p> <p>Rated power - P2: 0.75 kW</p>

Qty.	Description
1	<p> Mains frequency: 50 Hz  Suitable for 50/60 Hz: N  Rated voltage: 3 x 220-240D/380-415Y V  Rated current: 3.30/1.90 A  Starting current: 580-620 %  Cos phi - power factor: 0.81-0.71  Rated speed: 2840-2870 rpm  Efficiency: IE3 80,7%  Motor efficiency at full load: 80.7 %  Motor efficiency at 3/4 load: 82.7 %  Motor efficiency at 1/2 load: 81.7 %  Number of poles: 2  Enclosure class (IEC 34-5): 55 Dust/Jetting  Insulation class (IEC 85): F  Motor No: 85U05104 </p> <p> Others:  Terminal box position: 6  Minimum efficiency index, MEI ≥: 0.70  Net weight: 22.7 kg  Gross weight: 26 kg  Shipping volume: 0.068 m³  Danish VVS No.: 386966201  Country of origin: HU  Custom tariff no.: 84137075 </p>

On request MTR 10-2/1 A-W-A-HUUV 50 Hz

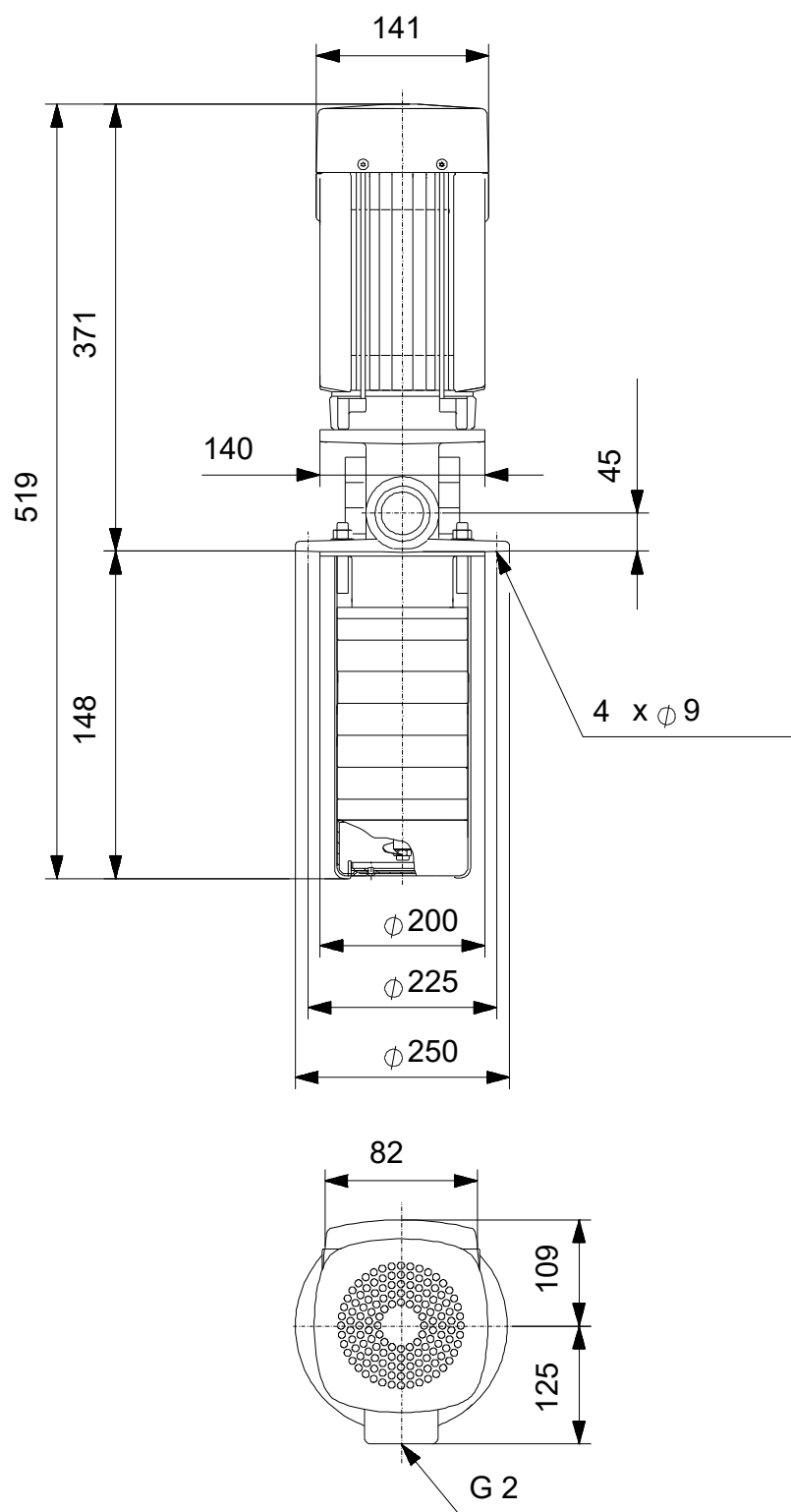


Description	Value		
<b>General information:</b>			
Product name:	MTR 10-2/1 A-W-A-HUUV		
Product No:	On request		
EAN number:	On request		
<b>Technical:</b>			
Pump speed on which pump data are based:	2864 rpm		
Rated flow:	167 l/min		
Rated head:	7.1 m		
Chambers:	2		
Impellers:	1		
Number of reduced-diameter impellers:	0		
Drainage back to tank:	N		
Pump orientation:	Vertical		
Code for shaft seal:	HUUV		
Approvals:	CE,EAC		
Curve tolerance:	ISO9906:2012 3B		
Pump version:	A		
Model:	A		
<b>Materials:</b>			
Pump head:	Cast iron		
Pump head:	EN 1561 EN-GJL-200		
Pump head:	ASTM A48-25B		
Impeller:	Stainless steel		
Impeller:	EN 1.4301		
Impeller:	AISI 304		
Material code:	A		
<b>Installation:</b>			
t max amb:	60 °C		
Maximum operating pressure:	25 bar		
Max pressure at stated temp:	25 bar / 90 °C		
Type of connection:	G internal thread		
Size of outlet connection:	2 inch		
Immersion depth:	148 mm		
Flange size for motor:	FT100		
Connect code:	W		
<b>Liquid:</b>			
Pumped liquid:	Water		
Liquid temperature range:	-10 .. 90 °C		
Selected liquid temperature:	20 °C		
Density:	998.2 kg/m <sup>3</sup>		
<b>Electrical data:</b>			
Motor standard:	IEC		
Motor type:	80A		
IE Efficiency class:	IE3		
Rated power - P2:	0.75 kW		
Mains frequency:	50 Hz		
Suitable for 50/60 Hz:	N		
Rated voltage:	3 x 220-240D/380-415Y V		
Rated current:	3.30/1.90 A		
Starting current:	580-620 %		
Cos phi - power factor:	0.81-0.71		
Rated speed:	2840-2870 rpm		
Efficiency:	IE3 80,7%		
Motor efficiency at full load:	80.7 %		
Motor efficiency at 3/4 load:	82.7 %		
Motor efficiency at 1/2 load:	81.7 %		
Number of poles:	2		
Enclosure class (IEC 34-5):	55 Dust/Jetting		
Insulation class (IEC 85):	F		
Built-in motor protection:	NONE		
Motor No:	85U05104		
<b>Controls:</b>			

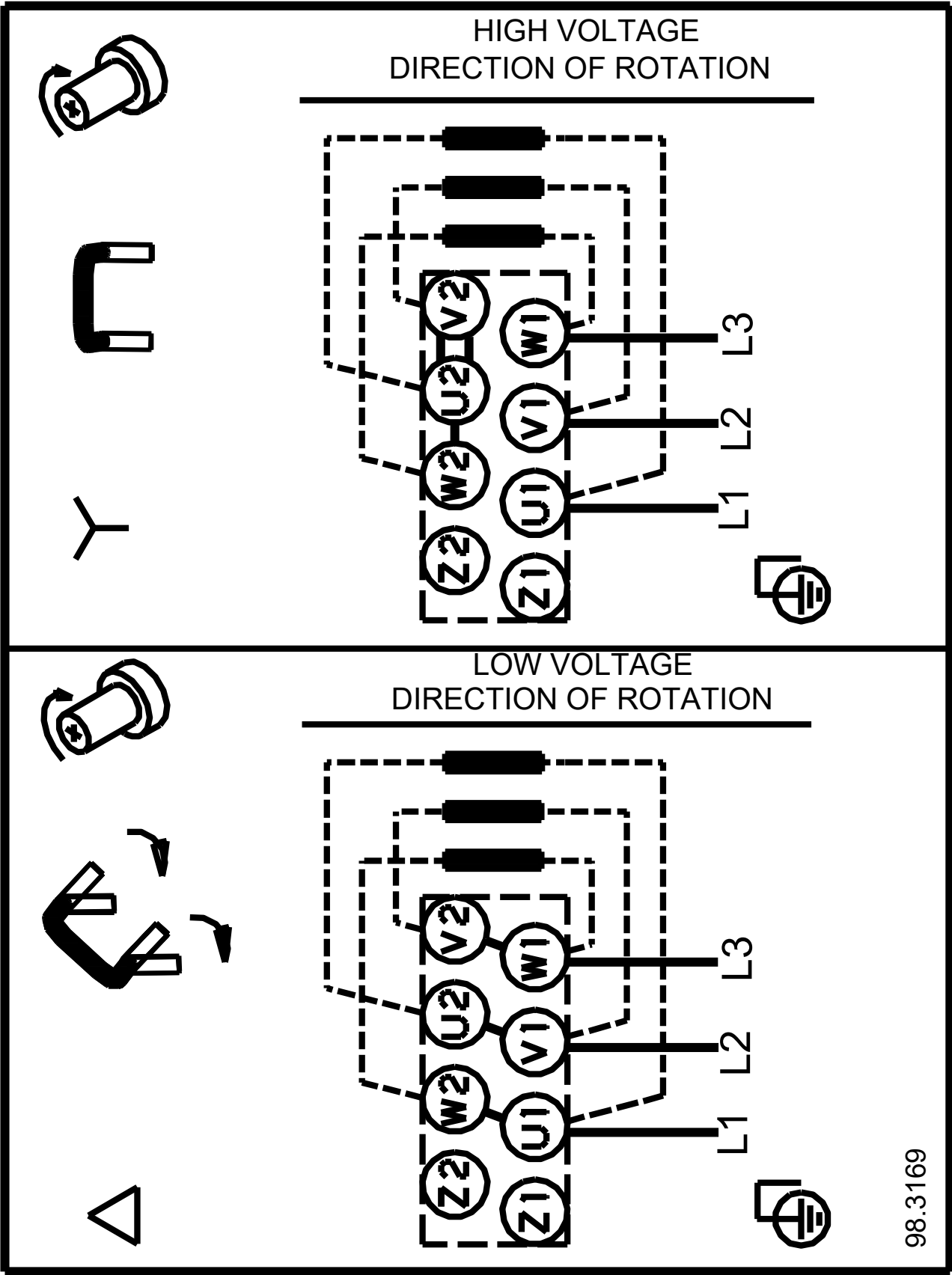


Description	Value
Frequency converter:	NONE
<b>Others:</b>	
Terminal box position:	6
Minimum efficiency index, MEI ≥:	0.70
Net weight:	22.7 kg
Gross weight:	26 kg
Shipping volume:	0.068 m³
Danish VVS No.:	386966201
Country of origin:	HU
Custom tariff no.:	84137075

# On request MTR 10-2/1 A-W-A-HUUV 50 Hz



Note! All units are in [mm] unless others are stated.  
Disclaimer: This simplified dimensional drawing does not show all details.



98.3169

Note! All units are in [mm] unless others are stated.

<b>Order Data:</b>	
--------------------	--

Position	Your pos.	Product name	Amount	Product No	Total
		MTR 10-2/1	1	On request	Price on request