
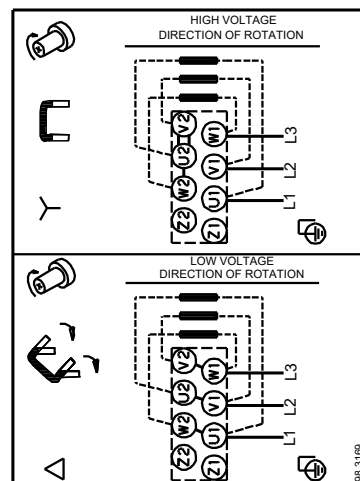
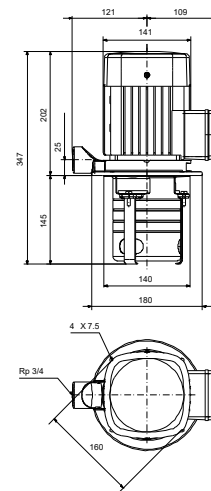
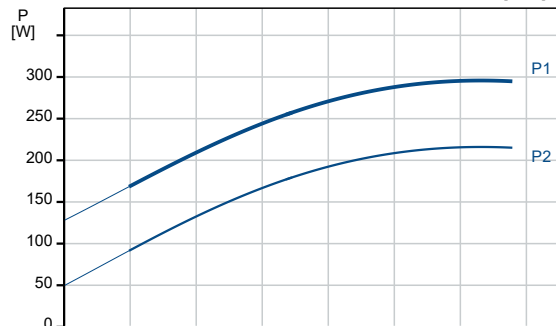
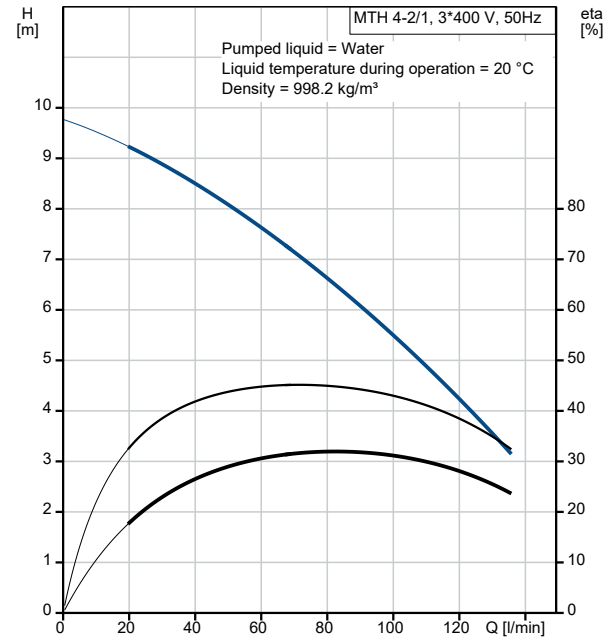


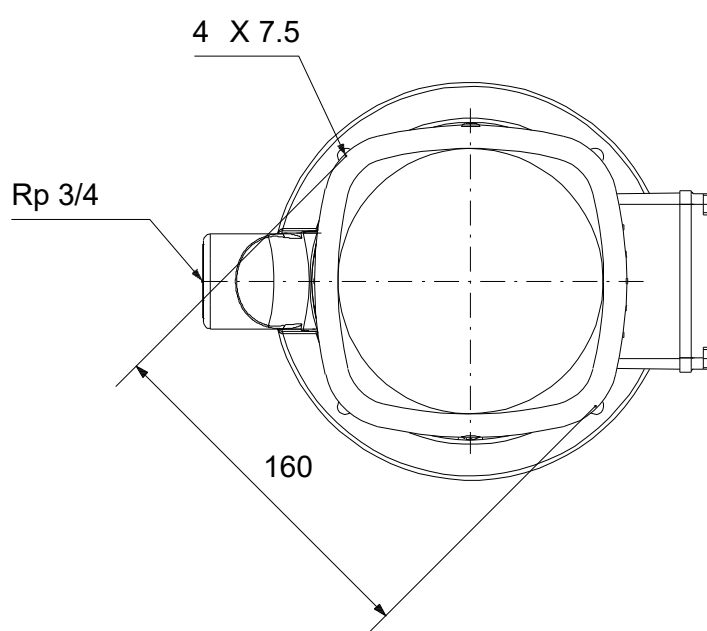
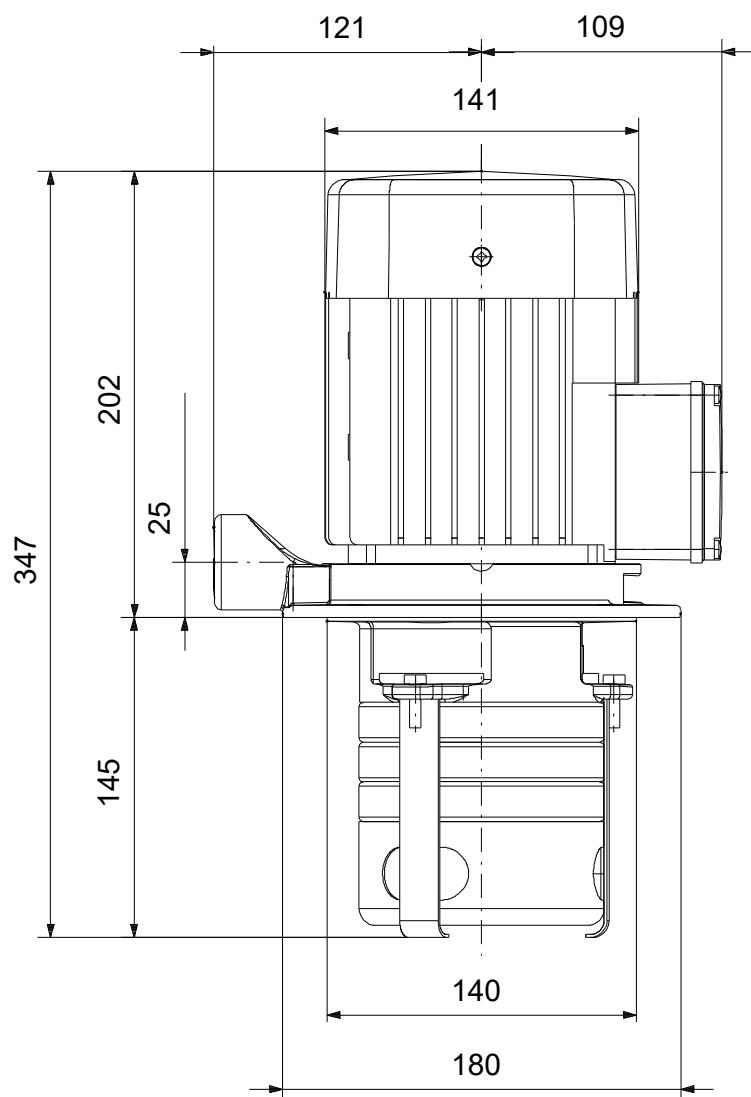
Qty.	Description
1	<p><b>MTH 4-2/1 A-W-A-AQQV</b></p>  <p><b>Note! Product picture may differ from actual product</b></p> <p>Product No.: On request Multistage, immersible, self-priming, centrifugal pump for vertical installation in tanks etc.</p> <p>The pump has the following characteristics:</p> <ul style="list-style-type: none"> <li>- Installation length according to DIN 5440.</li> <li>- Impellers, intermediate chambers and spline shaft are made of Stainless steel.</li> <li>- Mechanical shaft seal according to EN 12756.</li> </ul> <p>The pump is close-coupled with a 3-phase motor.</p> <p>Liquid: Pumped liquid: Water Liquid temperature range: -10 .. 90 °C Selected liquid temperature: 20 °C Density: 998.2 kg/m³</p> <p>Technical: Rated flow: 83.3 l/min Rated head: 6.1 m Chambers: 2 Code for shaft seal: AQQV Curve tolerance: ISO9906:2012 3B</p> <p>Materials: Pump housing: Cast iron EN 1561 EN-GJL-200 ASTM A48-25B Impeller: Stainless steel EN 1.4301 AISI 304</p> <p>Installation: Max. ambient: 40 °C Maximum operating pressure: 10 bar Max pressure at stated temp: 10 bar / 90 °C Type of connection: Rp Size of outlet connection: 3/4 inch Immersion depth: 145 mm</p> <p>Electrical data: Motor standard: IEC Frame size: 71B Multi plug: N IE efficiency class: IE3 Rated power - P2: 0.55 kW Mains frequency: 50 Hz Suitable for 50/60 Hz: Y Rated voltage: 3 x 220-240D/380-415Y V Service factor: 1.30 Rated current: 2.50/1.44 A Maximum current consumption: 2.95/1.72 A</p>

Qty.	Description	
1	Starting current:	580-620 %
	Rated speed:	2855 rpm
	Efficiency:	77.8 %
	Enclosure class (IEC 34-5):	IP54
	Insulation class (IEC 85):	F
	Built-in motor protection:	NONE
	Others:	
	Terminal box position:	6
	Minimum efficiency index, MEI ≥:	0.70
	Net weight:	13.2 kg
	Gross weight:	14.3 kg
	Country of origin:	HU
	Custom tariff no.:	84137075

Description	Value
<b>General information:</b>	
Product name:	MTH 4-2/1 A-W-A-AQQV
Product No:	On request
EAN number:	On request
<b>Technical:</b>	
Rated flow:	83.3 l/min
Rated head:	6.1 m
Chambers:	2
Impellers:	1
Number of reduced-diameter impellers:	0
<b>Materials:</b>	
Code for shaft seal:	AQQV
Curve tolerance:	ISO9906:2012 3B
Pump version:	A
Model:	A
<b>Installation:</b>	
Max. ambient:	40 °C
Maximum operating pressure:	10 bar
Max pressure at stated temp:	10 bar / 90 °C
Type of connection:	Rp
Size of outlet connection:	3/4 inch
Immersion depth:	145 mm
Connect code:	W
<b>Liquid:</b>	
Pumped liquid:	Water
Liquid temperature range:	-10 .. 90 °C
Selected liquid temperature:	20 °C
Density:	998.2 kg/m³
<b>Electrical data:</b>	
Motor standard:	IEC
Frame size:	71B
Multi plug:	N
IE efficiency class:	IE3
Rated power - P2:	0.55 kW
Mains frequency:	50 Hz
Suitable for 50/60 Hz:	Y
Rated voltage:	3 x 220-240D/380-415Y V
<b>Others:</b>	
Service factor:	1.30
Rated current:	2.50/1.44 A
Maximum current consumption:	2.95/1.72 A
Starting current:	580-620 %
Rated speed:	2855 rpm
Efficiency:	77.8 %
Enclosure class (IEC 34-5):	IP54
Insulation class (IEC 85):	F
Built-in motor protection:	NONE
Terminal box position:	6
Minimum efficiency index, MEI ≥:	0.70
Net weight:	13.2 kg
Gross weight:	14.3 kg
Country of origin:	HU
Custom tariff no.:	84137075



# On request MTH 4-2/1 A-W-A-AQQV 50 Hz



Note! All units are in [mm] unless others are stated.  
Disclaimer: This simplified dimensional drawing does not show all details.

<b>Order Data:</b>	
--------------------	--

Position	Your pos.	Product name	Amount	Product No	Total
		MTH 4-2/1	1	On request	Price on request