
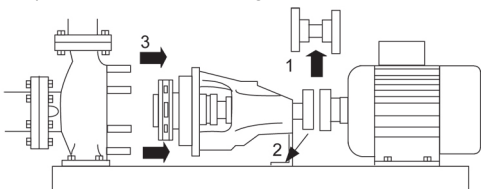
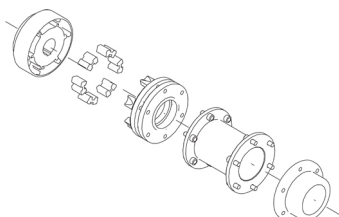


Qty.	Description
1	<p data-bbox="199 331 655 360"><b>NK 150-315.2/244 AA2F1AESBQQEYW1</b></p> <div data-bbox="213 427 576 651">  </div> <p data-bbox="592 680 1062 703" style="text-align: center;"><b>Note! Product picture may differ from actual product</b></p> <p data-bbox="199 712 464 739">Product No.: <a href="#">99001704</a></p> <p data-bbox="199 772 1460 871">Non-self-priming, single-stage, centrifugal pump designed according to ISO 5199 with dimensions and rated performance according to EN 733. Flanges are PN 10 with dimensions according to EN 1092-2. The pump has an axial suction port, a radial discharge port and horizontal shaft. It is of the back pull-out design enabling removal of the coupling, bearing bracket and impeller without disturbing the motor, pump housing or pipework.</p> <p data-bbox="199 884 922 911">The unbalanced rubber bellows seal is according to DIN EN 12756.</p> <p data-bbox="199 913 1460 963">The pump is fitted with a foot-mounted, fan-cooled asynchronous motor. Pump and motor are mounted on a common base frame.</p> <p data-bbox="199 972 1460 1046">The product's minimum efficiency index (MEI) is greater or equal to 0.70. This is by the Commission Regulation (EU) considered as an indicative benchmark for best-performing water pump available on the market as from 1 January 2013.</p> <p data-bbox="199 1057 1182 1084">Pump and motor are mounted on a common steel base frame in accordance with ISO 3661.</p> <p data-bbox="199 1088 1460 1137">The back pull-out design together with a spacer coupling makes it possible to service the pump without dismantling the pump housing and motor from the base frame.</p> <p data-bbox="199 1144 804 1171">This saves realignment of pump and motor after service.</p> <ol data-bbox="220 1176 820 1261" style="list-style-type: none"> <li>1) Remove coupling.</li> <li>2) Remove the bolts in the bearing bracket support foot.</li> <li>3) Remove the bearing bracket from the pump housing.</li> </ol> <div data-bbox="204 1265 686 1453">  </div> <p data-bbox="199 1512 282 1541"><b>Pump</b></p> <p data-bbox="199 1547 1460 1621">The pump housing has both a priming and a drain hole closed by plugs. The impeller is a closed impeller with double-curved blades with smooth surfaces. The impeller is statically balanced according to ISO 1940-1 class G6.3 and hydraulically balanced to compensate for axial thrust.</p> <p data-bbox="199 1632 1023 1659">Wear rings used in pump housing and for impeller are made of bronze/brass.</p> <p data-bbox="199 1664 1460 1736">The pump is fitted with an unbalanced rubber bellows seal with torque transmission across the spring and around the bellows. Due to the bellows, the seal does not wear the shaft, and the axial movement is not prevented by deposits on the shaft.</p> <p data-bbox="199 1747 861 1774">{IMG Filename: GRALON_NB-NK-G_SHAFTSEAL_Bxxx.gif }</p> <p data-bbox="199 1778 323 1805">Seal faces:</p> <ul data-bbox="236 1809 788 1865" style="list-style-type: none"> <li>• Rotating seal ring material: silicon carbide (SiC)</li> <li>• Stationary seat material: silicon carbide (SiC)</li> </ul> <p data-bbox="199 1870 1460 1919">This material pairing is used where higher corrosion resistance is required. The high hardness of this material pairing offers good resistance against abrasive particles.</p> <p data-bbox="199 1926 850 1953">Secondary seal material: EPDM (ethylene-propylene rubber)</p> <p data-bbox="199 1957 1075 1984">EPDM has excellent resistance to hot water. EPDM is not suitable for mineral oils.</p> <p data-bbox="199 1989 1241 2016">The shaft is made of stainless steel and has a diameter of 42 mm where the coupling is mounted.</p> <p data-bbox="199 2020 951 2047">The pump uses a spacer coupling between the pump and motor shaft.</p>



The base frame is prepared for grouting. Grouting improves the contact of the base frame with the foundation and stiffens the base frame construction. This changes the vibration level.

Grouting is mandatory for all base frame types for all 2-pole pumps equal to and above 55 kW to fulfill the max vibration level requirements stated in standards. For other pump motor combinations grouting of the base frame is optional.

## Motor

The motor is a totally enclosed, fan-cooled motor with principal dimensions to IEC and DIN standards. Electrical tolerances comply with IEC 60034.

The motor efficiency is classified as IE3 in accordance with IEC 60034-30-1.

The motor has thermistors (PTC sensors) in the windings in accordance with DIN 44081/DIN 44082. The protection reacts to both slow- and quick-rising temperatures, e.g. constant overload and stalled conditions.

Thermal switches must be connected to an external control circuit in a way which ensures that the automatic reset cannot cause accidents. The motors must be connected to a motor-protective circuit breaker according to local regulations.

A variable speed drive makes adjustment of pump performance to any duty point possible. If the motor is to be connected to a variable speed drive, the pump must be ordered with an electrically insulated motor bearing.

## Further product details

Cast-iron parts have an epoxy-based coating made in a cathodic electro-deposition (CED) process. CED is a high-quality dip-painting process where an electrical field around the products ensures deposition of paint particles as a thin, well-controlled layer on the surface.

## Technical data

### Controls:

Frequency converter: NONE

Pressure sensor: N

### Liquid:

Pumped liquid: Water

Liquid temperature range: -25 .. 120 °C

Selected liquid temperature: 20 °C

Density: 998.2 kg/m<sup>3</sup>

### Technical:

Pump speed on which pump data are based: 2982 rpm

Rated flow: 707.4 m<sup>3</sup>/h

Pump with motor (Yes/No): Y

Rated head: 60.16 m

Actual impeller diameter: 244 mm

Nominal impeller diameter: 315.2

Code for shaft seal: BQQE

Mechanical seal type: Single

Curve tolerance: ISO9906:2012 3B

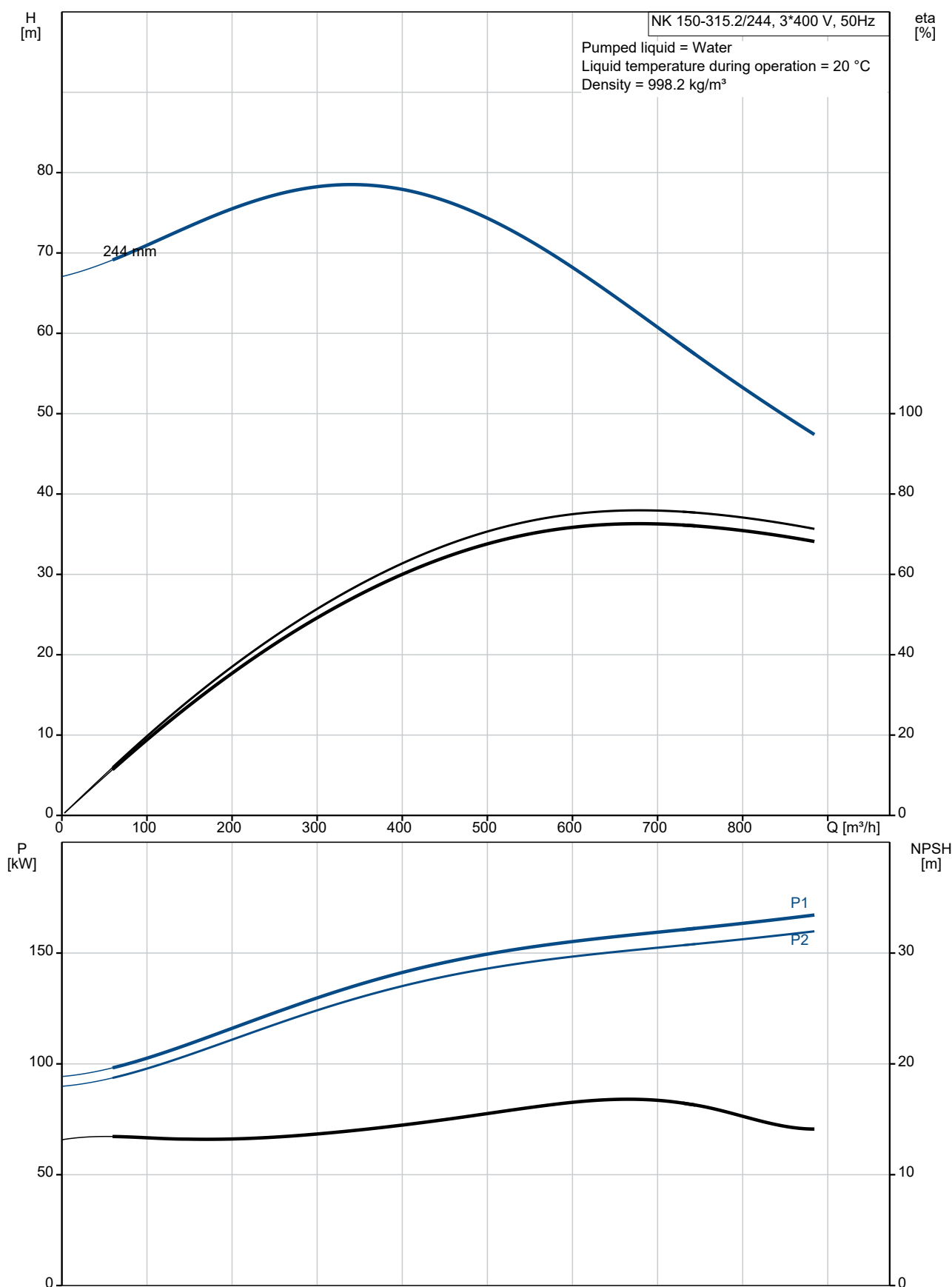
Bearing design: Standard

### Materials:

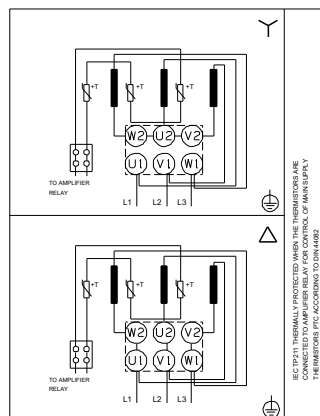
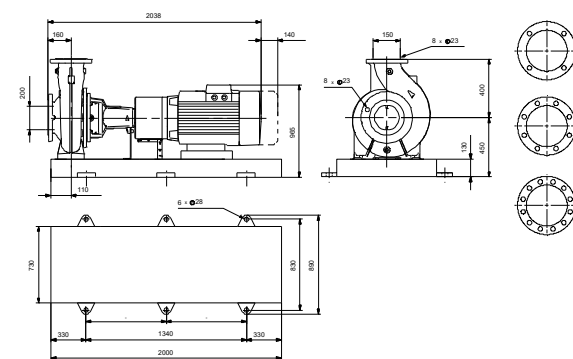
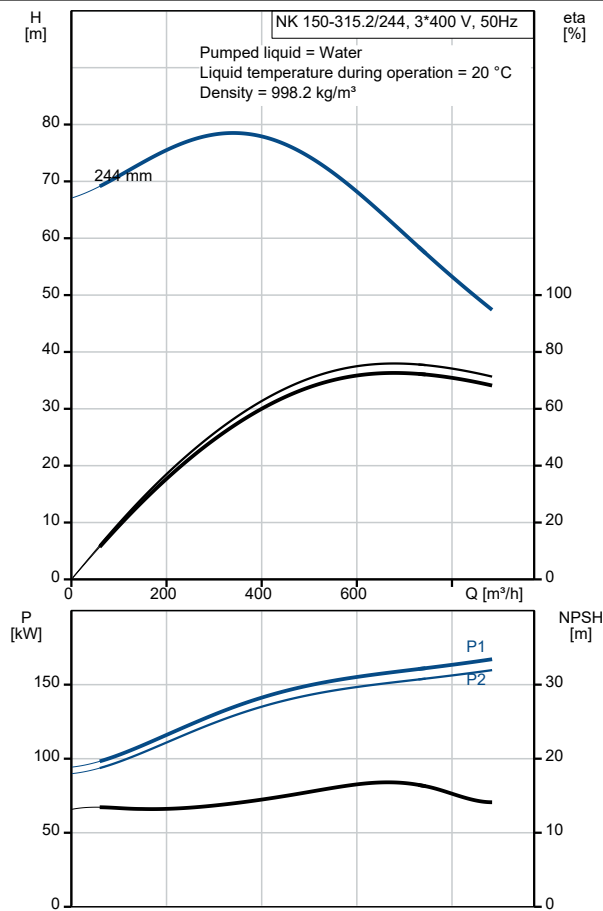
Pump housing: Cast iron

Qty.	Description
	<p>EN-GJL-250 ASTM class 35 Wear ring: Brass Impeller: Cast iron EN-GJL-200 ASTM class 30 Internal pump house coating: CED Shaft: Stainless steel EN 1.4301 AISI 304</p> <p>Installation: t max amb: 55 °C Maximum operating pressure: 10 bar Pipe connection standard: EN 1092-2 Type of inlet connection: DIN Type of outlet connection: DIN Size of inlet connection: DN 200 Size of outlet connection: DN 150 Pressure rating for connection: PN 10 Coupling type: Flexible w/spacer Base frame design: EN/ISO Code for base frame: 10 Grouting (Yes/No): Y</p> <p>Electrical data: Motor type: SIEMENS IE Efficiency class: IE3 Rated power - P2: 160 kW Mains frequency: 50 Hz Rated voltage: 3 x 380-420D/660-725Y V Rated current: 265/152 A Starting current: 780-780 % Cos phi - power factor: 0.92 Rated speed: 2982 rpm Efficiency: IE3 95,6% Motor efficiency at full load: 95.6-95.6 % Motor efficiency at 3/4 load: 95.7-95.7 % Motor efficiency at 1/2 load: 95.2-95.2 % Number of poles: 2 Enclosure class (IEC 34-5): IP55 Insulation class (IEC 85): F Motor No: 98943384 Bearing insulation type N-end: STEEL BEARING</p> <p>Others: Minimum efficiency index, MEI ≥: 0.70 Net weight: 1550 kg Gross weight: 1650 kg Shipping volume: 2.96 m³ Country of origin: HU Custom tariff no.: 84137059</p>

## 99001704 NK 150-315.2/244 AA2F1AESBQQEYW1 50 Hz



Description	Value
<b>General information:</b>	
Product name:	NK 150-315.2/244 AA2F1AESBQQEYW1
Product No:	99001704
EAN number:	5712604993781
<b>Technical:</b>	
Pump speed on which pump data are based:	2982 rpm
Rated flow:	707.4 m³/h
Pump with motor (Yes/No):	Y
Rated head:	60.16 m
Actual impeller diameter:	244 mm
Nominal impeller diameter:	315.2
Shaft diameter:	42 mm
Code for shaft seal:	BQQE
Mechanical seal type:	Single
Curve tolerance:	ISO9906:2012 3B
Pump version:	A2
Bearing design:	Standard
<b>Materials:</b>	
Pump housing:	Cast iron
Pump housing:	EN-GJL-250
Pump housing:	ASTM class 35
Wear ring:	Brass
Impeller:	Cast iron
Impeller:	EN-GJL-200
Impeller:	ASTM class 30
Internal pump house coating:	CED
Material code:	A
Code for rubber:	E
Shaft:	Stainless steel
Shaft:	EN 1.4301
Shaft:	AISI 304
<b>Installation:</b>	
t max amb:	55 °C
Maximum operating pressure:	10 bar
Pipe connection standard:	EN 1092-2
Type of inlet connection:	DIN
Type of outlet connection:	DIN
Size of inlet connection:	DN 200
Size of outlet connection:	DN 150
Pressure rating for connection:	PN 10
Coupling type:	Flexible w/spacer
Base frame design:	EN/ISO
Code for base frame:	10
Grouting (Yes/No):	Y
Connect code:	F
<b>Liquid:</b>	
Pumped liquid:	Water
Liquid temperature range:	-25 .. 120 °C
Selected liquid temperature:	20 °C
Density:	998.2 kg/m³
<b>Electrical data:</b>	
Motor type:	SIEMENS
IE Efficiency class:	IE3
Rated power - P2:	160 kW
Mains frequency:	50 Hz
Rated voltage:	3 x 380-420D/660-725Y V
Rated current:	265/152 A





Company name:

Created by:

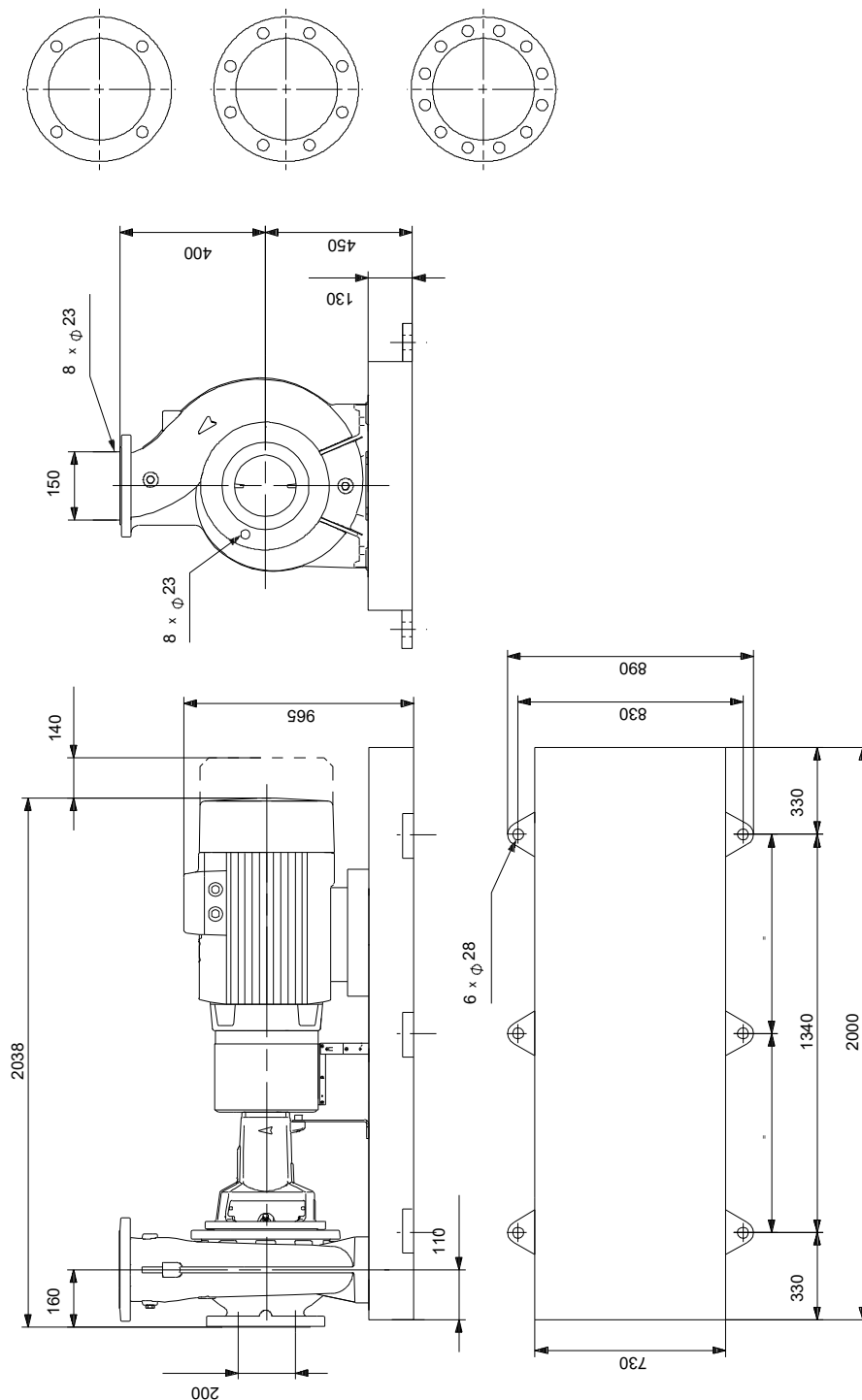
Phone:

Date:

16/06/2022

Description	Value
Starting current:	780-780 %
Cos phi - power factor:	0.92
Rated speed:	2982 rpm
Efficiency:	IE3 95,6%
Motor efficiency at full load:	95.6-95.6 %
Motor efficiency at 3/4 load:	95.7-95.7 %
Motor efficiency at 1/2 load:	95.2-95.2 %
Number of poles:	2
Enclosure class (IEC 34-5):	IP55
Insulation class (IEC 85):	F
Built-in motor protection:	PTC
Motor No:	98943384
Bearing insulation type N-end:	STEEL BEARING
<b>Controls:</b>	
Frequency converter:	NONE
Pressure sensor:	N
<b>Others:</b>	
Minimum efficiency index, MEI ≥:	0.70
Net weight:	1550 kg
Gross weight:	1650 kg
Shipping volume:	2.96 m <sup>3</sup>
Country of origin:	HU
Custom tariff no.:	84137059

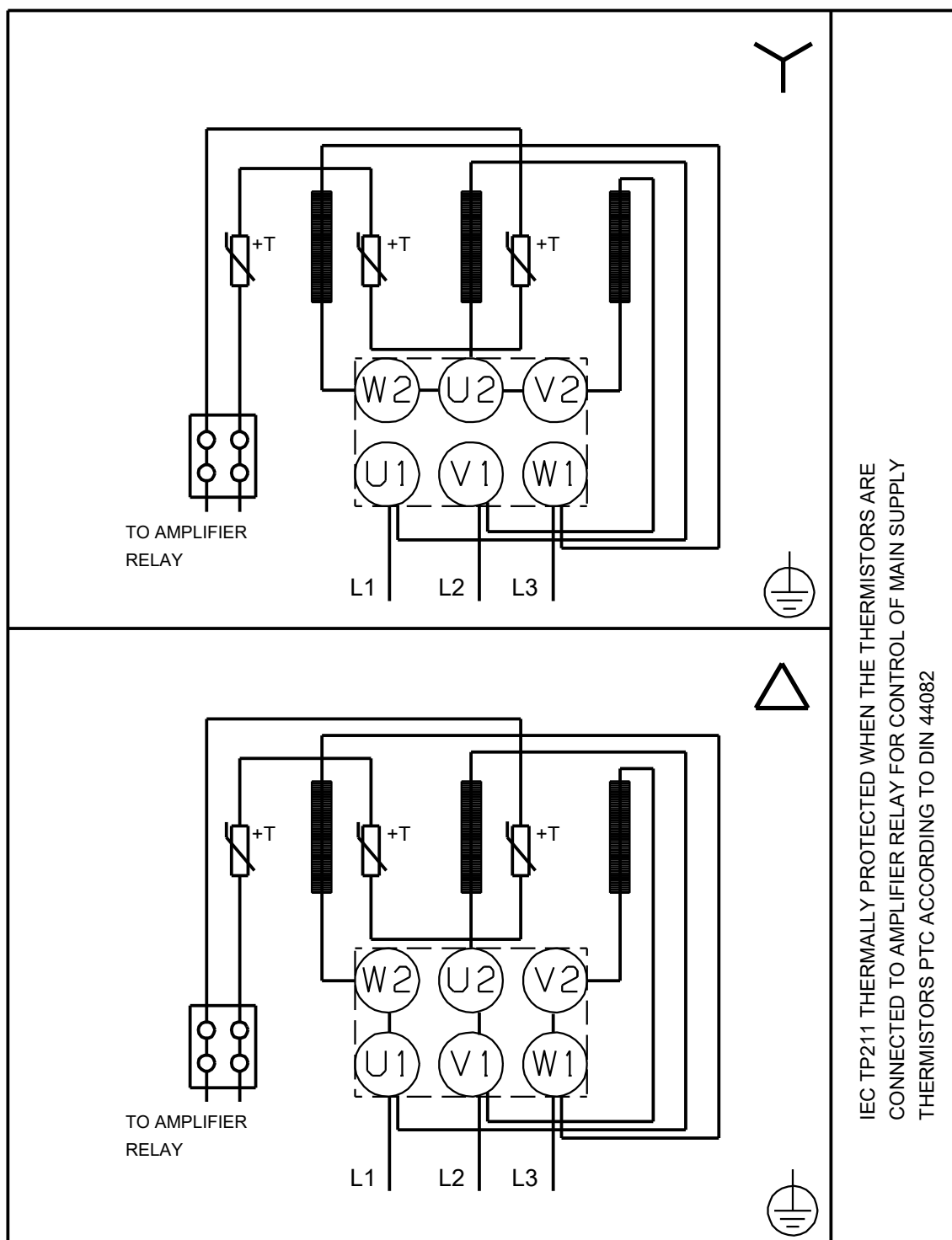
## 99001704 NK 150-315.2/244 AA2F1AESBQQEYW1 50 Hz



Note! All units are in [mm] unless others are stated.

Disclaimer: This simplified dimensional drawing does not show all details.

**99001704 NK 150-315.2/244 AA2F1AESBQQEYW1 50 Hz**



Note! All units are in [mm] unless others are stated.





Company name:

Created by:

Phone:

Date:

16/06/2022

---

**Order Data:**

Product name: NK 150-315.2/244

Amount: 1

Product No: 99001704

Total: Price on request

---