


Position	Count	Description
	1	<p>MAGNA1 D 32-100 F</p>  <p>Product No.: 99221242</p> <p>The new MAGNA1 is the simple option for a job well done. It is the perfect choice when replacing older circulators and due to its compliance with the EuP 2015 regulations, substantial savings on electricity is a reality. The ideal choice for basic performance needs in applications where basic system control and monitoring is desired.</p> <ul style="list-style-type: none"> • Monitoring via the fault relay, ensuring peace of mind • Digital start/stop input available for remote pump control • Continuous operation and reduced downtime with the wireless twin pump function (available on twin-head pumps) • High energy efficiency resulting in substantial savings on electricity • Easy setup and operation via the simple user interface • No maintenance due to the canned-rotor type design. <p>MAGNA1 is the simple and efficient choice for most applications including</p> <ul style="list-style-type: none"> • Heating <ul style="list-style-type: none"> - Main pump - Mixing loops - Heating surfaces • Cooling <ul style="list-style-type: none"> - Air conditioning surfaces - Ground source heat pump systems - Smaller chiller applications <p>Liquid: Pumped liquid: Water Liquid temperature range: 14 .. 230 °F Liquid temperature during operation: 140 °F Density: 61.35 lb/ft³</p> <p>Technical: TF class: 110 Approvals on nameplate: CE,VDE,EAC,CN ROHS,WEEE</p> <p>Materials: Pump housing: Cast iron EN-GJL-250 ASTM A48-250B Impeller: PES 30%GF</p> <p>Installation: Range of ambient temperature: 32 .. 104 °F Maximum operating pressure: 145 psi Flange standard: DIN Pipe connection: DN 32 Pressure stage: PN6/10 Port-to-port length: 8 11/16 in</p>



Company name:

Created by:

Phone:

Date:

12/10/2018

Position	Count	Description
		<p>Electrical data:</p> <p>Power input - P1: 8 .. 175 W Main frequency: 60 Hz Rated voltage: 1 x 230 V Maximum current consumption: 0.08 .. 1.41 A Enclosure class (IEC 34-5): X4D Insulation class (IEC 85): F</p> <p>Others:</p> <p>Energy (EEI): 0.22 Net weight: 32 lb Gross weight: 33.8 lb Shipping volume: 1.62 ft³</p>



Company name:

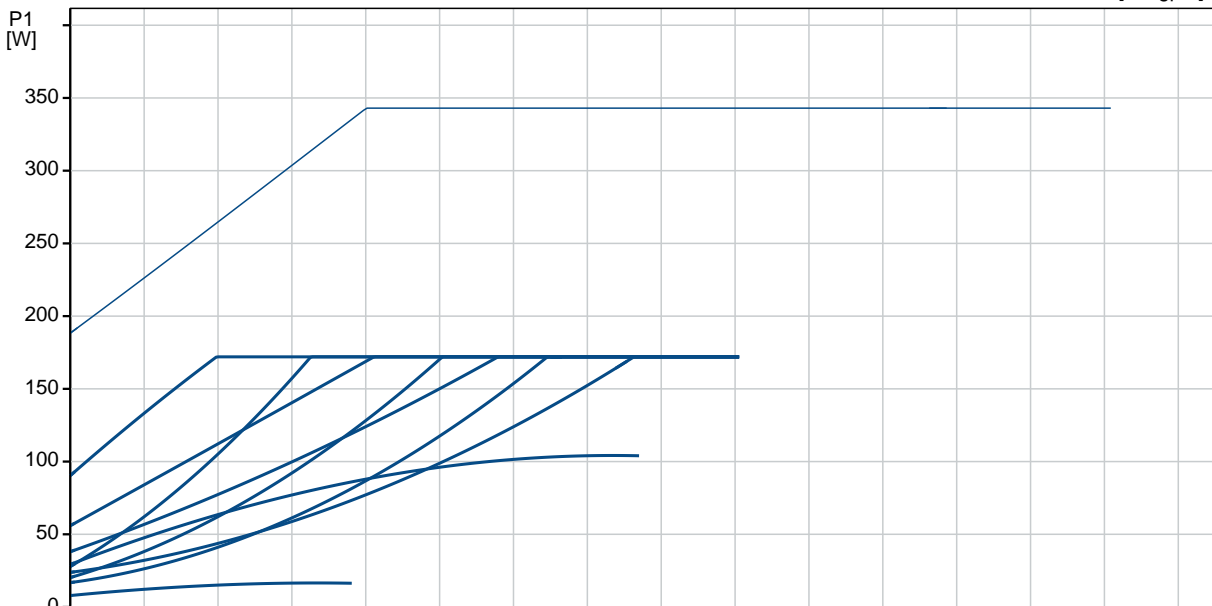
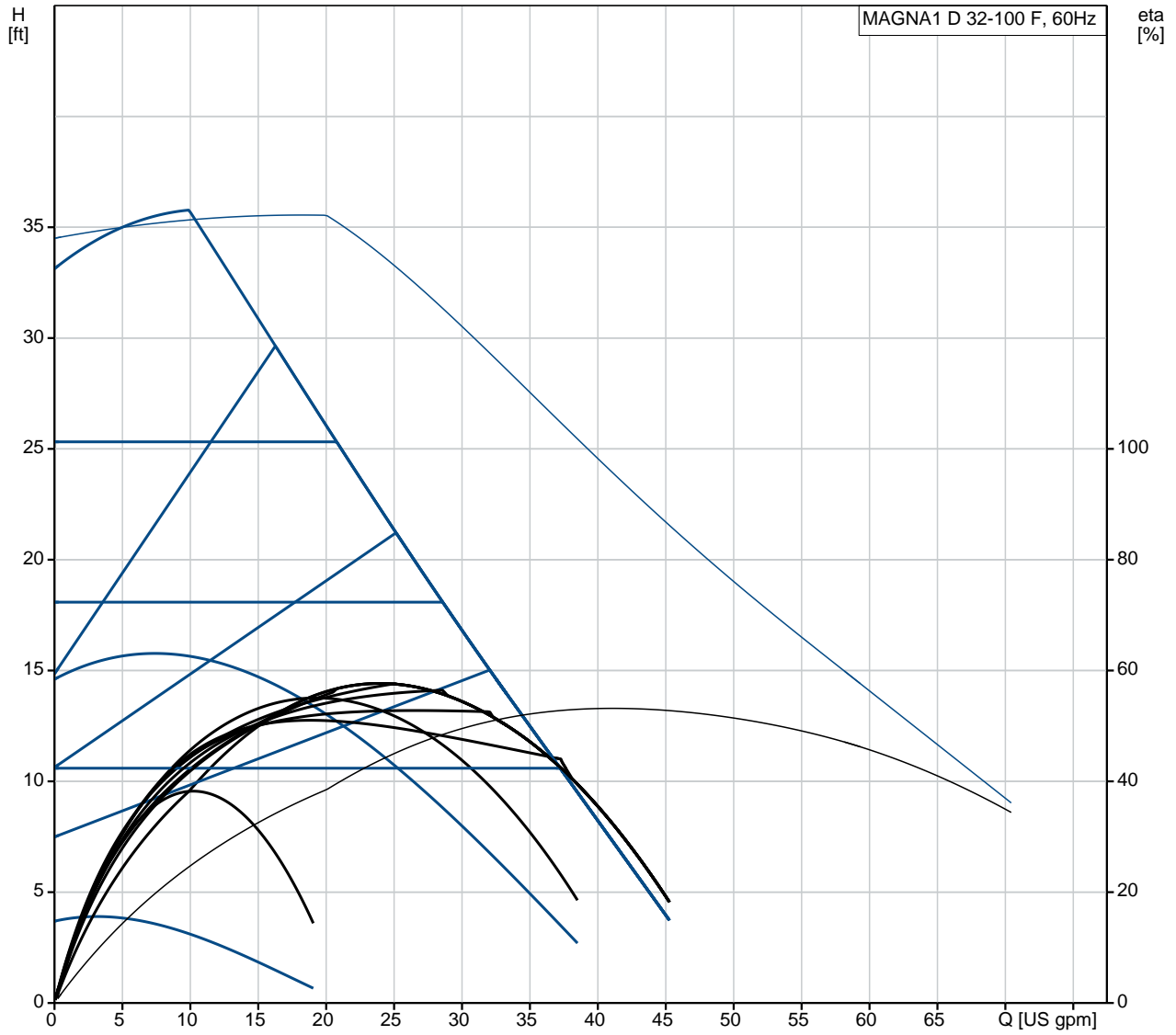
Created by:

Phone:

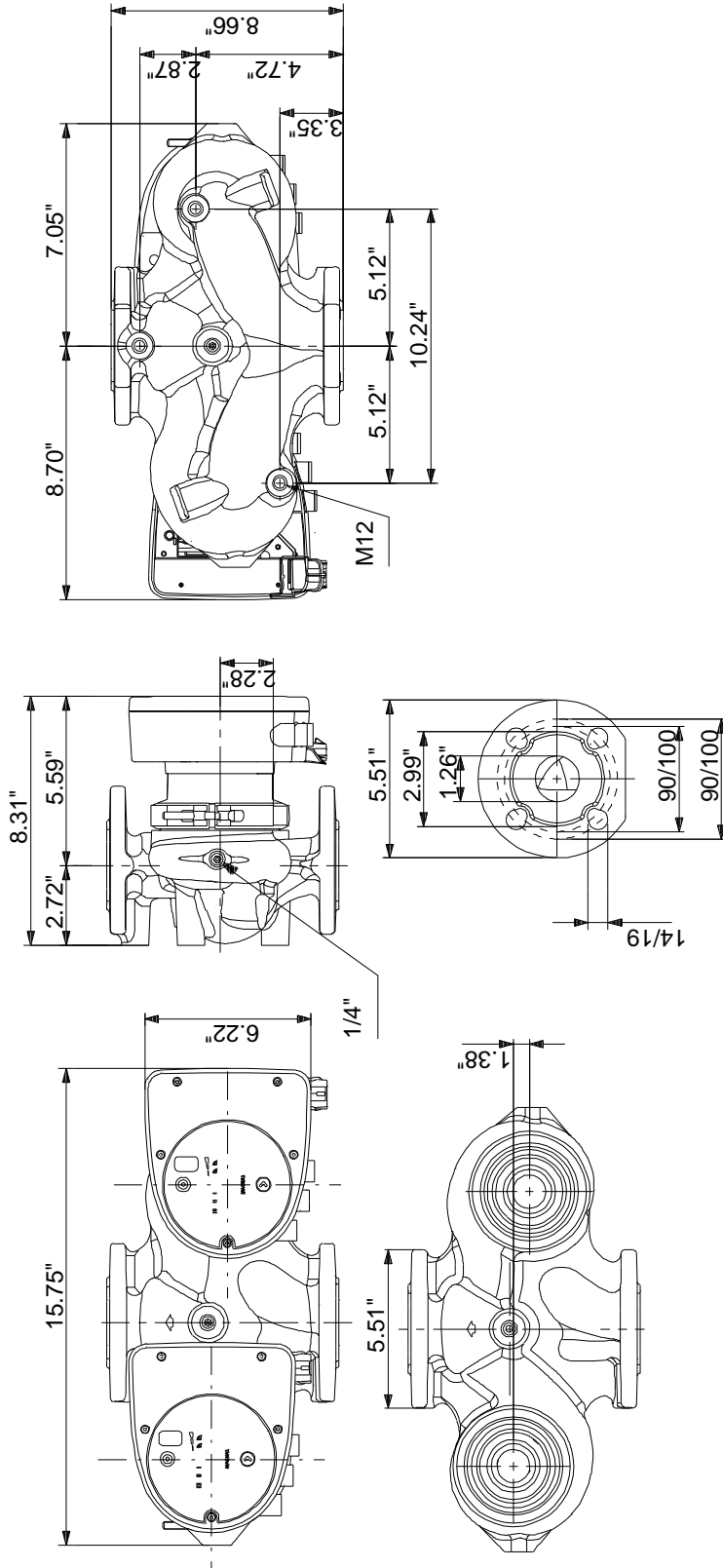
Date:

12/10/2018

99221242 MAGNA1 D 32-100 F 60 Hz



99221242 MAGNA1 D 32-100 F 60 Hz



Note! All units are in [mm] unless otherwise stated.
 Disclaimer: This simplified dimensional drawing does not show all details.