
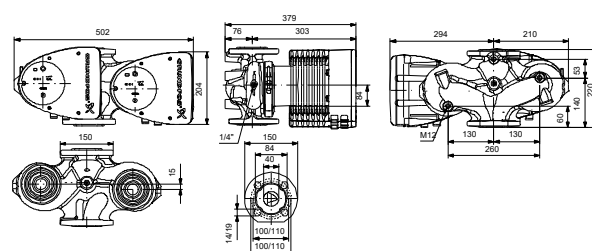
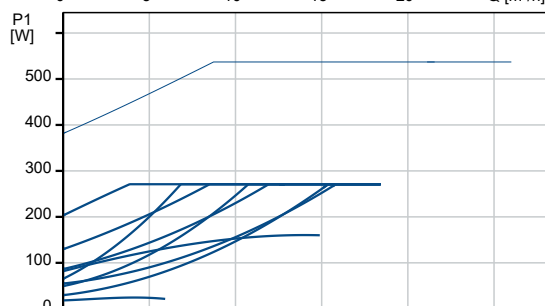
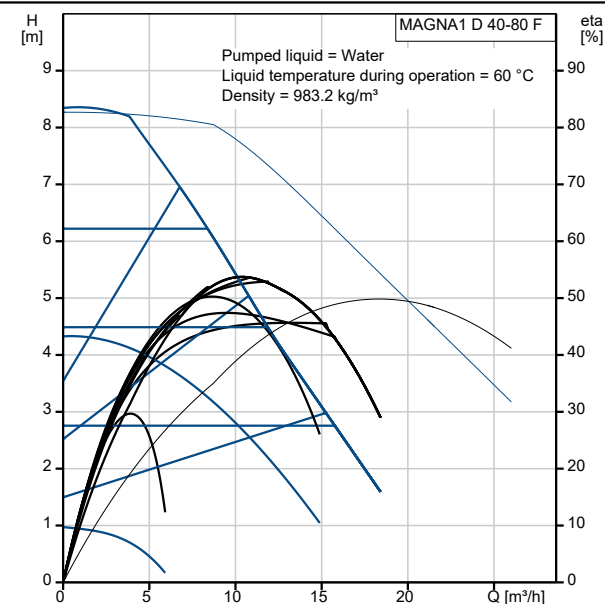
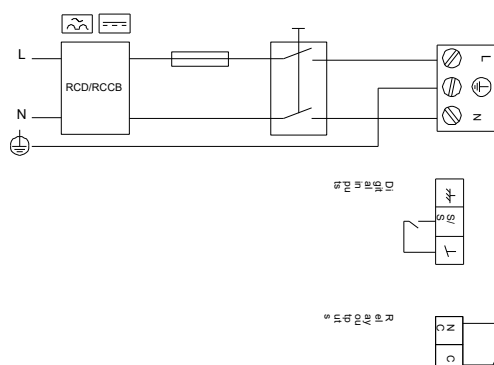


Qty.	Description
1	<p data-bbox="204 338 422 365">MAGNA1 D 40-80 F</p> <div data-bbox="209 383 568 546">  </div> <p data-bbox="595 533 1062 555">Note! Product picture may differ from actual product</p> <p data-bbox="204 564 478 586">Product No.: On request</p> <p data-bbox="204 651 1460 757">The Grundfos MAGNA1 D circulator pump is the simple option for a job well done. With its high energy efficiency the product lives up to the EuP 2015 regulations ensuring substantial savings on electricity, and with its intuitive, user-friendly interface and maintenance-free design, MAGNA1 D is the ideal circulator pump for basic performance needs in applications where basic system control and monitoring are desired.</p> <p data-bbox="204 792 1445 846">With this range of circulator pumps, everything from setup to basic control and monitoring are made easy. The pump is maintenance-free due to the canned-rotor type design.</p> <p data-bbox="204 853 1409 929">MAGNA1 D offers peace of mind due to the security of supply obtained by having a redundant pump, resulting in improved uptime. The flow, and thereby constant comfort, is secured because of its ability to automatically switch between pump heads if one breaks down. The two pumps communicate wirelessly.</p> <p data-bbox="204 936 1455 1012">MAGNA1 D offers the possibility of monitoring the pump via the fault relay output. The digital start/stop input remotely controls the pump. The pump communicates wirelessly with the Grundfos GO Remote app and can also communicate via radio.</p> <p data-bbox="204 1021 1134 1048">MAGNA1 D can work as main pump in both heating and cooling applications, including:</p> <ul data-bbox="204 1081 595 1227" style="list-style-type: none"> • Mixing loops • Heating surfaces • Air-conditioning surfaces • Ground-source heat pump systems • Smaller chiller applications. <p data-bbox="204 1261 1439 1314">MAGNA1 D is a single-phase pump and characterised by having the controller and operating panel integrated in the control box.</p> <p data-bbox="204 1321 1018 1348">The pump housing is available in both cast-iron and stainless-steel versions.</p> <p data-bbox="204 1350 1425 1404">The composite rotor can is carbon-fibre reinforced, the bearing plate and rotor cladding are made of stainless steel and the stator housing is made of aluminium.</p> <p data-bbox="204 1411 600 1438">The power electronics are air-cooled.</p> <p data-bbox="204 1469 1460 1545">The pump incorporates a 4-pole synchronous, permanent-magnet motor (PM motor). This motor type is characterised by higher efficiency than a conventional asynchronous squirrel-cage motor. The pump speed is controlled by an integrated frequency converter.</p>

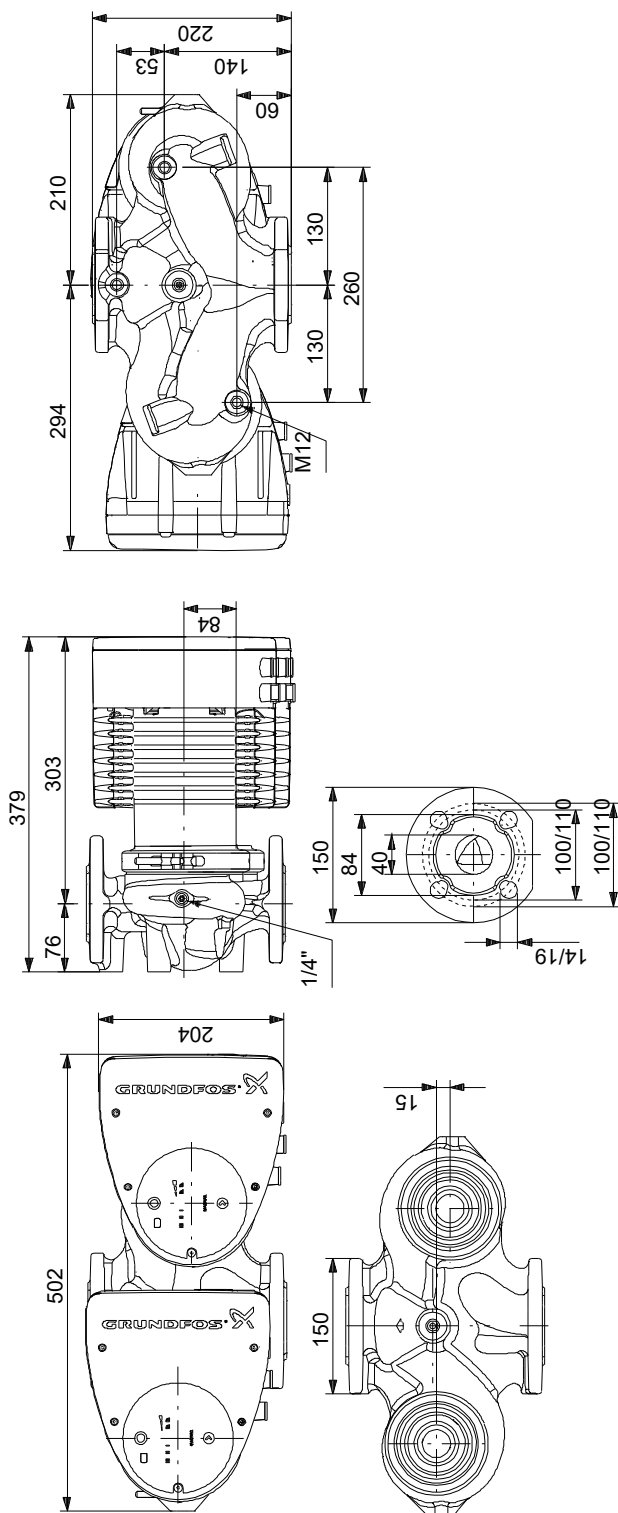
Description	Value
General information:	
Product name:	MAGNA1 D 40-80 F
Product No:	On request
EAN number:	On request
Technical:	
Head max:	80 dm
TF class:	110
Approvals on nameplate:	CE,VDE,EAC,CN ROHS,WEEE
Model:	C </td
Materials:	
Pump housing:	Cast iron
Pump housing:	EN-GJL-250
Pump housing:	ASTM A48-250B
Impeller:	PES 30%GF
Installation:	
Range of ambient temperature:	0 .. 40 °C
Maximum operating pressure:	10 bar
Flange standard:	DIN
Pipe connection:	DN 40
Pressure rating:	PN 6/10
Port-to-port length:	220 mm
Liquid:	
Pumped liquid:	Water
Liquid temperature range:	-10 .. 110 °C
Selected liquid temperature:	60 °C
Density:	983.2 kg/m³
Electrical data:	
Power input - P1:	18.36 .. 276 W
Mains frequency:	50 / 60 Hz
Rated voltage:	1 x 230 V
Maximum current consumption:	0.2 .. 1.25 A
Enclosure class (IEC 34-5):	X4D
Insulation class (IEC 85):	F
Others:	
Energy (EEI):	0.23
Net weight:	32.4 kg
Gross weight:	36.3 kg
Shipping volume:	0.087 m³
Country of origin:	DE
Custom tariff no.:	84137030



Example of mains-connected motor with mains switch, backup fuse and additional protection



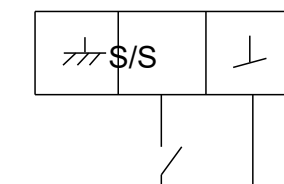
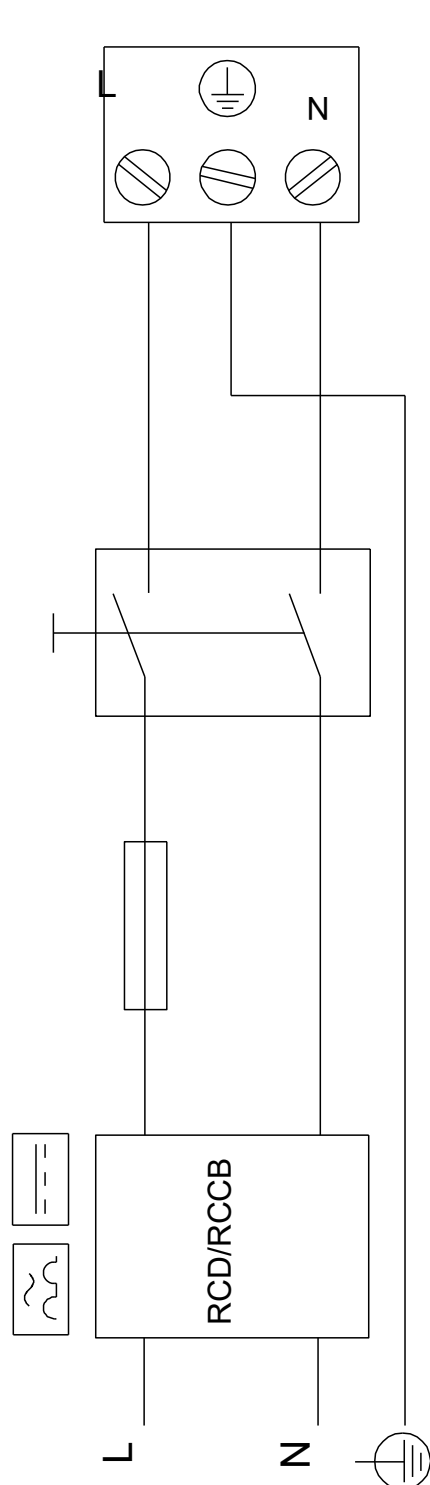
On request MAGNA1 D 40-80 F



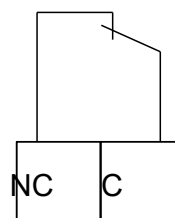
Note! All units are in [mm] unless others are stated.
Disclaimer: This simplified dimensional drawing does not show all details.

On request MAGNA1 D 40-80 F

Example of mains-connected motor
with mains switch, backup fuse and additional protection



Digital inputs



Relay outputs

Note! All units are in [mm] unless others are stated.



Company name:

Created by:

Phone:

Date:

20/10/2021

Order Data:

Product name: MAGNA1 D 40-80 F

Amount: 1

Product No: On request

Total: Price on request
