
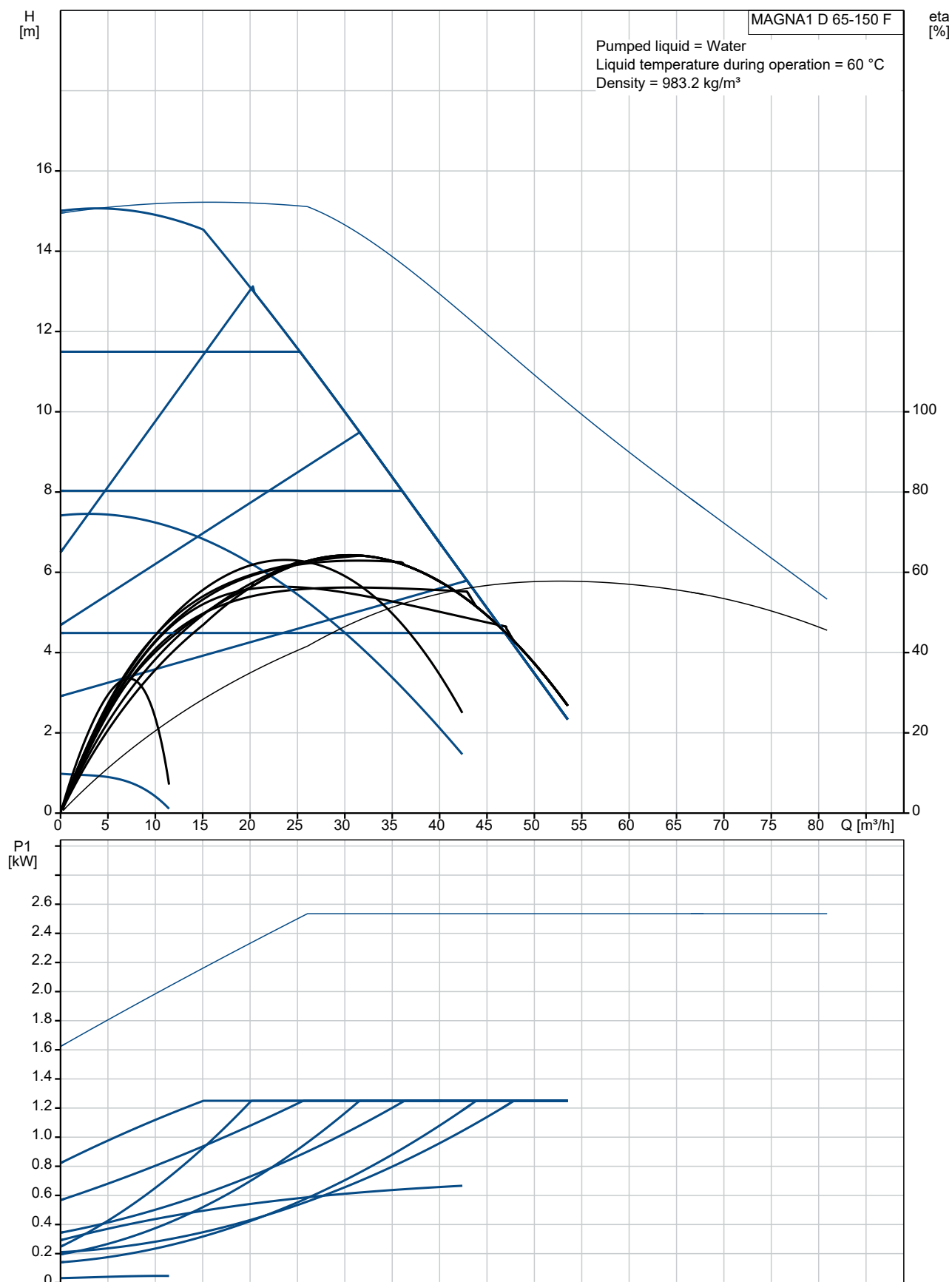
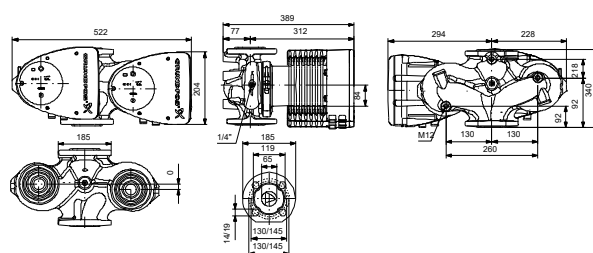
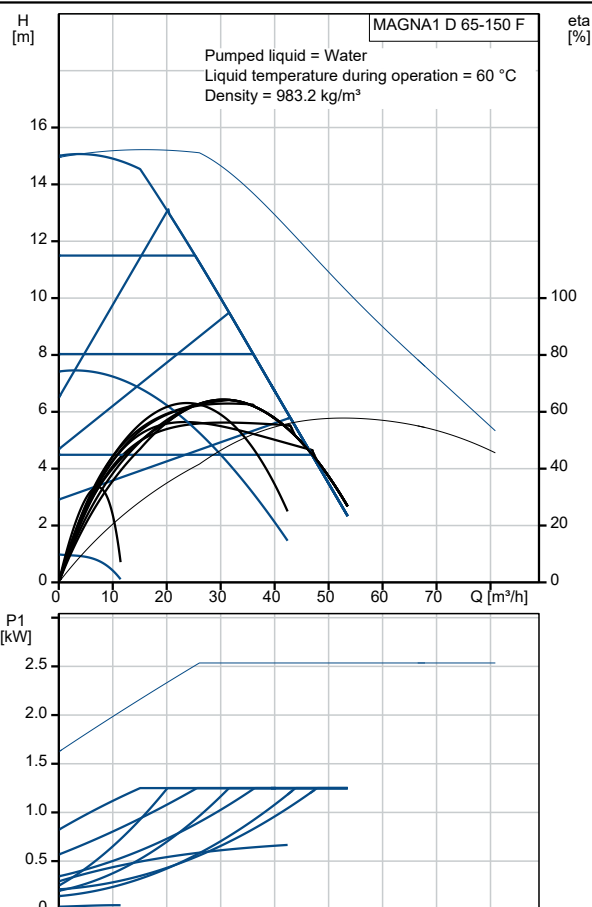


Qty.	Description
1	<p data-bbox="199 331 438 362"><b>MAGNA1 D 65-150 F</b></p> <div data-bbox="199 369 566 548">  </div> <p data-bbox="590 526 1061 548">Note! Product picture may differ from actual product</p> <p data-bbox="199 560 478 593">Product No.: On request</p> <p data-bbox="199 649 1460 750">The Grundfos MAGNA1 D circulator pump is the simple option for a job well done. With its high energy efficiency the product lives up to the EuP 2015 regulations ensuring substantial savings on electricity, and with its intuitive, user-friendly interface and maintenance-free design, MAGNA1 D is the ideal circulator pump for basic performance needs in applications where basic system control and monitoring are desired.</p> <p data-bbox="199 795 1460 840">With this range of circulator pumps, everything from setup to basic control and monitoring are made easy. The pump is maintenance-free due to the canned-rotor type design.</p> <p data-bbox="199 851 1460 929">MAGNA1 D offers peace of mind due to the security of supply obtained by having a redundant pump, resulting in improved uptime. The flow, and thereby constant comfort, is secured because of its ability to automatically switch between pump heads if one breaks down. The two pumps communicate wirelessly.</p> <p data-bbox="199 940 1460 1008">MAGNA1 D offers the possibility of monitoring the pump via the fault relay output. The digital start/stop input remotely controls the pump. The pump communicates wirelessly with the Grundfos GO Remote app and can also communicate via radio.</p> <p data-bbox="199 1019 1133 1048">MAGNA1 D can work as main pump in both heating and cooling applications, including:</p> <ul data-bbox="199 1075 598 1227" style="list-style-type: none"> <li>• Mixing loops</li> <li>• Heating surfaces</li> <li>• Air-conditioning surfaces</li> <li>• Ground-source heat pump systems</li> <li>• Smaller chiller applications.</li> </ul> <p data-bbox="199 1254 1460 1310">MAGNA1 D is a single-phase pump and characterised by having the controller and operating panel integrated in the control box.</p> <p data-bbox="199 1321 1021 1344">The pump housing is available in both cast-iron and stainless-steel versions.</p> <p data-bbox="199 1355 1460 1400">The composite rotor can is carbon-fibre reinforced, the bearing plate and rotor cladding are made of stainless steel and the stator housing is made of aluminium.</p> <p data-bbox="199 1411 598 1433">The power electronics are air-cooled.</p> <p data-bbox="199 1467 1460 1534">The pump incorporates a 4-pole synchronous, permanent-magnet motor (PM motor). This motor type is characterised by higher efficiency than a conventional asynchronous squirrel-cage motor. The pump speed is controlled by an integrated frequency converter.</p>

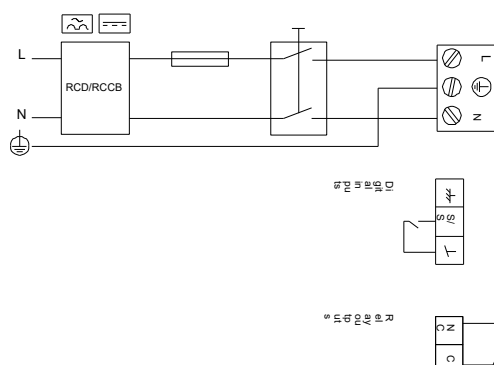
## On request MAGNA1 D 65-150 F



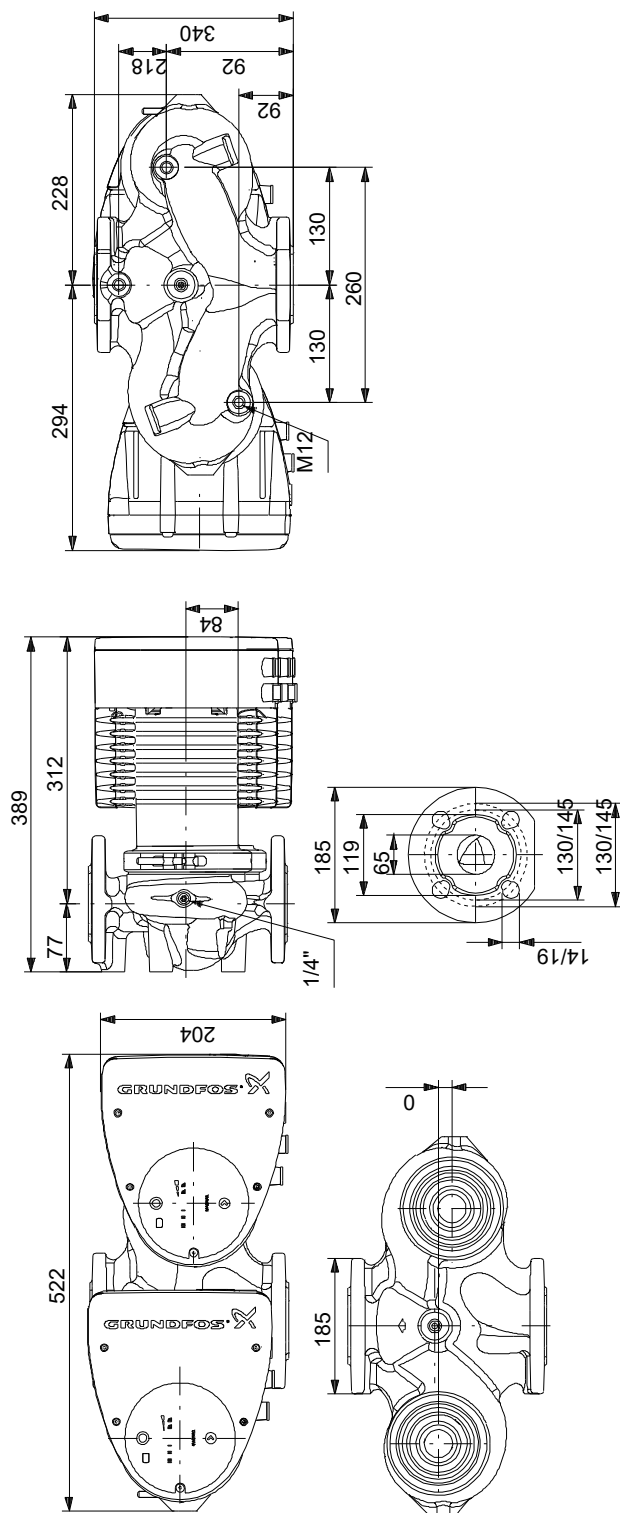
Description	Value
<b>General information:</b>	
Product name:	MAGNA1 D 65-150 F
Product No:	On request
EAN number:	On request
<b>Technical:</b>	
Head max:	150 dm
TF class:	110
Approvals on nameplate:	CE,VDE,EAC,CN ROHS,WEEE
Model:	C
<b>Materials:</b>	
Pump housing:	Cast iron
Pump housing:	EN-GJL-250
Pump housing:	ASTM A48-250B
Impeller:	PES 30%GF
<b>Installation:</b>	
Range of ambient temperature:	0 .. 40 °C
Maximum operating pressure:	10 bar
Flange standard:	DIN
Pipe connection:	DN 65
Pressure rating:	PN 6/10
Port-to-port length:	340 mm
<b>Liquid:</b>	
Pumped liquid:	Water
Liquid temperature range:	-10 .. 110 °C
Selected liquid temperature:	60 °C
Density:	983.2 kg/m³
<b>Electrical data:</b>	
Power input - P1:	32.33 .. 1275 W
Mains frequency:	50 / 60 Hz
Rated voltage:	1 x 230 V
Maximum current consumption:	0.33 .. 5.62 A
Enclosure class (IEC 34-5):	X4D
Insulation class (IEC 85):	F
<b>Others:</b>	
Energy (EEI):	0.21
Net weight:	46.2 kg
Gross weight:	53.8 kg
Shipping volume:	0.132 m³



Example of mains-connected motor  
with mains switch, backup fuse and additional protection



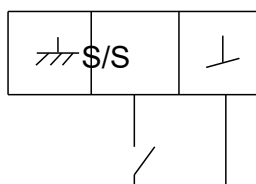
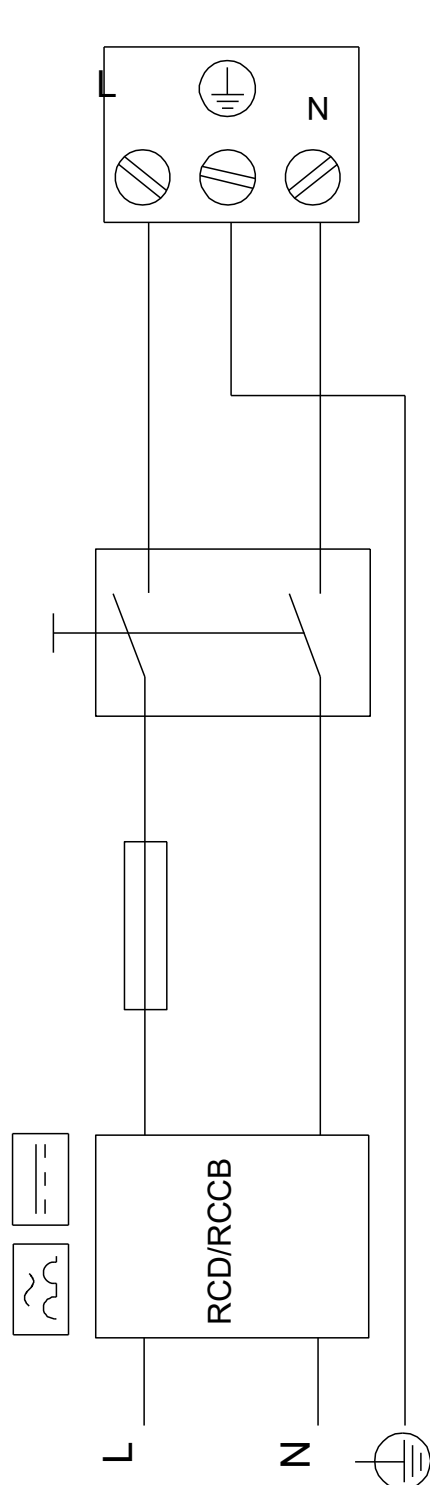
## On request MAGNA1 D 65-150 F



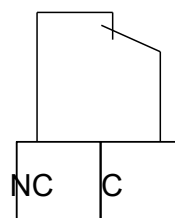
Note! All units are in [mm] unless others are stated.  
Disclaimer: This simplified dimensional drawing does not show all details.

## On request MAGNA1 D 65-150 F

Example of mains-connected motor  
with mains switch, backup fuse and additional protection



Digital inputs



Relay outputs

Note! All units are in [mm] unless others are stated.



Company name:

Created by:

Phone:

Date:

21/10/2021

---

**Order Data:**

Product name: MAGNA1 D 65-150 F

Amount: 1

Product No: On request

Total: Price on request

---