

**Qty. Description**

1 UPA 15-90 N



Note! Product picture may differ from actual product

Product No.: On request

Grundfos UPA 15-90 N is a domestic booster designed for pressure boosting of drinking water supplied from an external source in residential homes. The UPA booster pumps increase the pressure of domestic water to make the required pressure available at showers, taps and other tapping points.

This pump has an inlet and outlet port of 3/4. The pressure rating of the pump corresponds with PN 10 and a port-to-port length of 160 mm.

The UPA 15-90 N provides the comfort of constant water pressure with automatic start and stop. This is controlled by the integrated flow switch ensuring optimal start/stop of the booster pump according to demand.

The design is robust and built upon corrosion-free materials and stainless-steel pump housing to ensure a long lifetime.

The pump is a canned rotor pump type where pump and motor form an integral unit without shaft seal.

This pump must always be installed with horizontal motor shaft.

This booster has a 2-pole, asynchronous, squirrel-cage motor with built in impedance protection and short circuit proof.

The bearings are lubricated by the pumped liquid.

These constructional features ensure maintenance-free operation.

The pump has the following approvals CE,WEEE,UKCA-UPA.

This pump is also drinking water approved.

- Integrated flow switch: Automatic start and stop according to demand
- Low noise level
- Easy installation: plug and pump compact inline booster
- Integrated non-return valve
- Improved corrosion resistance
- Built in motor protection

**Controls:**

Flow switch Yes/No: Y

**Liquid:**

Pumped liquid: Water  
 Liquid temperature range: 2 .. 95 °C  
 Selected liquid temperature: 60 °C  
 Density: 983.2 kg/m<sup>3</sup>

**Technical:**

TF class: 95  
 Approvals on nameplate: CE,WEEE,UKCA-UPA

**Materials:**



Company name:

Created by:

Phone:

Date:

27/10/2021

Qty.	Description
	Pump housing: Stainless steel Impeller: PP Composit
	Installation: Max. ambient: 40 °C Maximum operating pressure: 10 bar Type of connection: G Pipe connection: 3/4 Pressure rating for connection: PN 10 Port-to-port length: 160 mm
	Electrical data: Max. power input: 120 W Mains frequency: 50 Hz Rated voltage: 1 x 230 V Current in speed 3: 0.48 A Capacitor size - run: 2.5 µF Enclosure class (IEC 34-5): X2D Insulation class (IEC 85): H Power plug: UK plug
	Others: Gross weight: 3.24 kg Shipping volume: 0.004 m³ Country of origin: CN Custom tariff no.: 84137030



Company name:

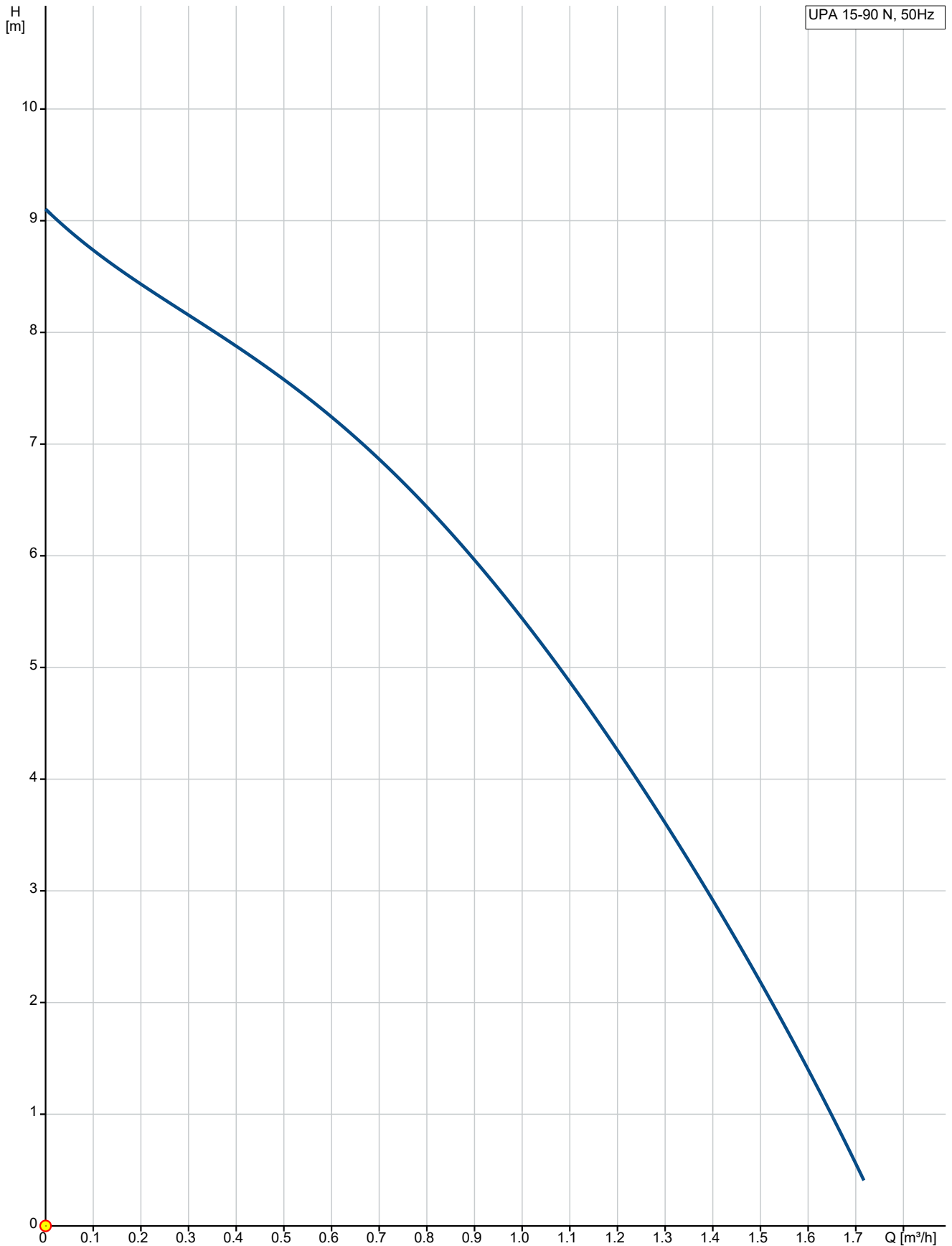
Created by:

Phone:

Date:

27/10/2021

## On request UPA 15-90 N 50 Hz



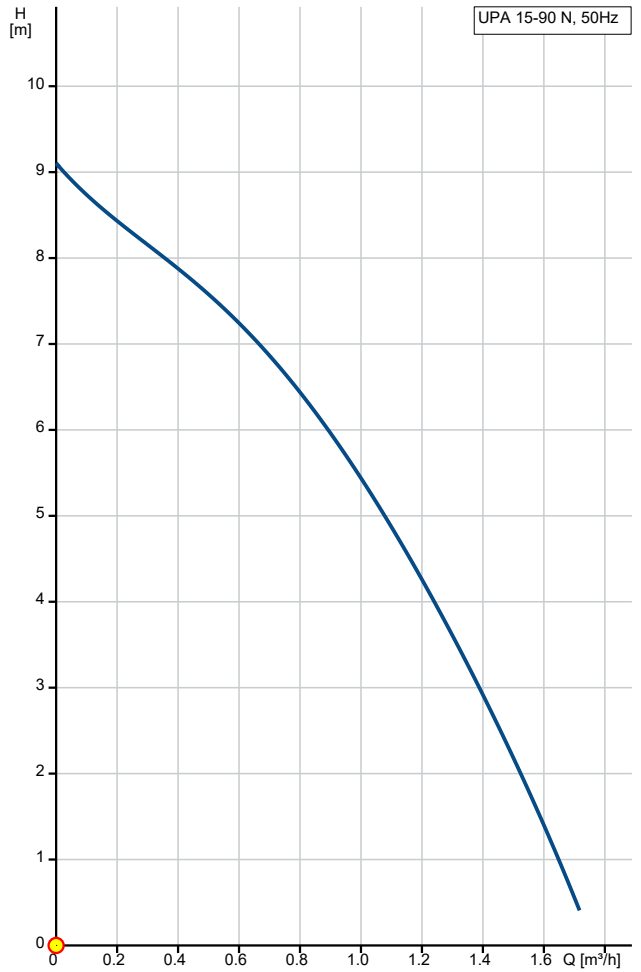


Company name:

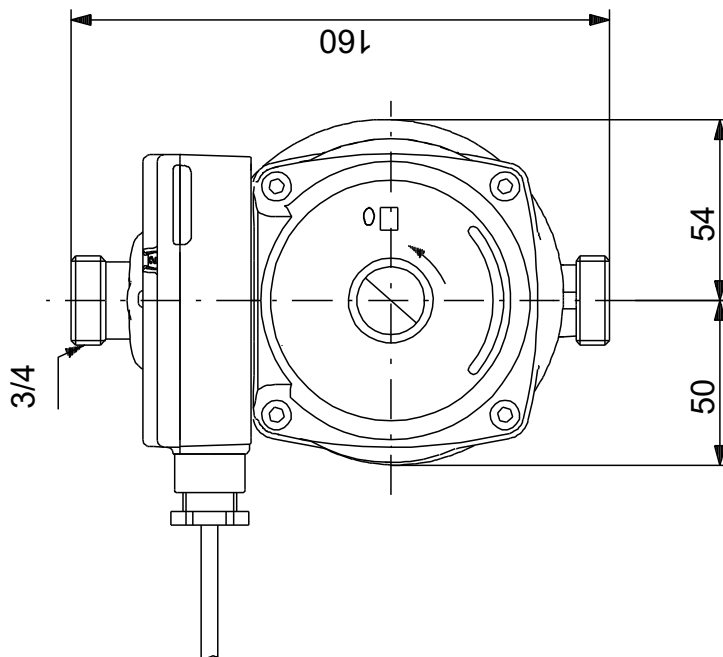
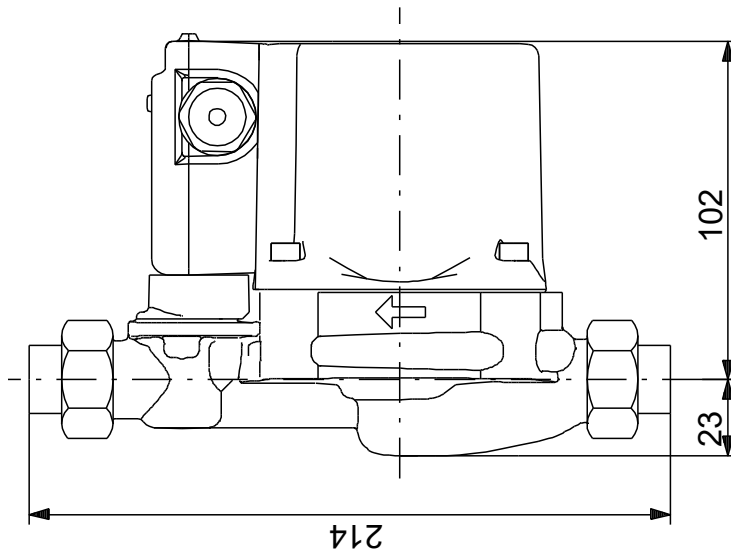
Created by:

Phone:

Date: 27/10/2021



## On request UPA 15-90 N 50 Hz



Note! All units are in [mm] unless others are stated.  
Disclaimer: This simplified dimensional drawing does not show all details.



Company name:

Created by:

Phone:

Date:

27/10/2021

---

**Order Data:**

Product name: UPA 15-90 N

Amount: 1

Product No: On request

Total: Price on request

---